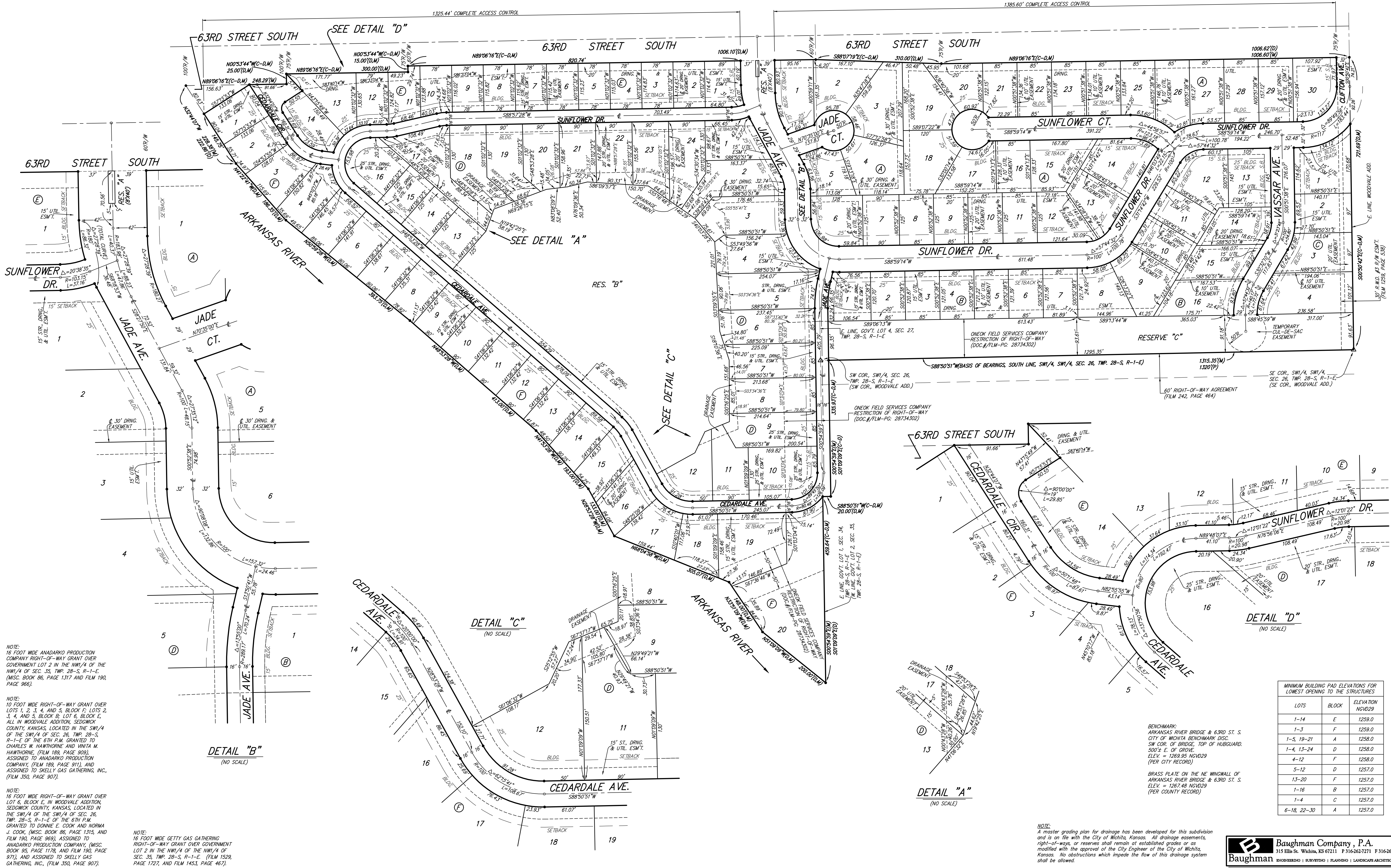


CLIFTON COVE ADDITION

SEDGWICK COUNTY, KANSAS

1,325.44' COMPLETE ACCESS CONTROL

1,385.60' COMPLETE ACCESS CONTROL



NOTE:
16 FOOT WIDE ANADARKO PRODUCTION COMPANY RIGHT-OF-WAY GRANT OVER GOVERNMENT LOT 2 IN THE NW1/4 OF THE NW1/4 OF SEC. 35, TWP. 28-S, R-1-E. (MISC. BOOK 86, PAGE 1317 AND FILM 190, PAGE 966).

NOTE:
10 FOOT WIDE RIGHT-OF-WAY GRANT OVER LOTS 1, 2, 3, 4, AND 5, BLOCK F; LOTS 2, 3, 4, AND 5, BLOCK B; LOT 6, BLOCK E, ALL IN WOODVALE ADDITION, SEDGWICK COUNTY, KANSAS, LOCATED IN THE SW1/4 OF THE SW1/4 OF SEC. 26, TWP. 28-S, R-1-E OF THE 6TH P.M. GRANTED TO CHARLES W. HAWTHORNE AND WINITA M. HAWTHORNE, (FILM 189, PAGE 909), ASSIGNED TO ANADARKO PRODUCTION COMPANY, (FILM 189, PAGE 911), AND ASSIGNED TO SKELLY GAS GATHERING, INC. (FILM 350, PAGE 907).

NOTE:
16 FOOT WIDE RIGHT-OF-WAY GRANT OVER LOT 6, BLOCK E, IN WOODVALE ADDITION, SEDGWICK COUNTY, KANSAS, LOCATED IN THE SW1/4 OF THE SW1/4 OF SEC. 26, TWP. 28-S, R-1-E OF THE 6TH P.M. GRANTED TO DONNIE E. COOK AND NORMA J. COOK, (MISC. BOOK 86, PAGE 1315, AND FILM 190, PAGE 969), ASSIGNED TO ANADARKO PRODUCTION COMPANY, (MISC. BOOK 95, PAGE 1178, AND FILM 190, PAGE 971), AND ASSIGNED TO SKELLY GAS GATHERING, INC. (FILM 350, PAGE 907).

NOTE:
16 FOOT WIDE GETTY GAS GATHERING RIGHT-OF-WAY GRANT OVER GOVERNMENT LOT 2 IN THE NW1/4 OF THE NW1/4 OF SEC. 35, TWP. 28-S, R-1-E. (FILM 1529, PAGE 1727, AND FILM 1453, PAGE 467).

DETAIL "B"
(NO SCALE)

DETAIL "C"
(NO SCALE)

DETAIL "D"
(NO SCALE)

DETAIL "A"
(NO SCALE)

LOTS	BLOCK	ELEVATION NGVD29
1-14	E	1259.0
1-3	F	1259.0
1-5, 19-21	A	1258.0
1-4, 13-24	D	1258.0
4-12	F	1258.0
5-12	D	1257.0
13-20	F	1257.0
1-16	B	1257.0
1-4	C	1257.0
6-18, 22-30	A	1257.0

BENCHMARK:
ARKANSAS RIVER BRIDGE & 63RD ST. S.
CITY OF WICHITA BENCHMARK DISC.
SW COR. OF BRIDGE, TOP OF HUB/GUARD.
500± E. OF GROVE.
ELEV. = 1269.95 NGVD29
(PER CITY RECORD)

BRASS PLATE ON THE NE WINGWALL OF
ARKANSAS RIVER BRIDGE & 63RD ST. S.
ELEV. = 1267.48 NGVD29
(PER COUNTY RECORD)

NOTE:
A master grading plan for drainage has been developed for this subdivision and is on file with the City of Wichita, Kansas. All drainage easements, right-of-ways, or reserves shall remain at established grades or as modified with the approval of the City Engineer of the City of Wichita, Kansas. No obstructions which impede the flow of this drainage system shall be allowed.

Baughman Company, P.A.
315 Ellis St., Wichita, KS 67211 P 316-262-7271 F 316-262-0149
Baughman ENGINEERING • SURVEYING • PLANNING • LANDSCAPE ARCHITECTURE
F:\PLAT\CLIFTON COVE REVISED.DWG\CLIFTON COVE REVISED.DWG\MGC