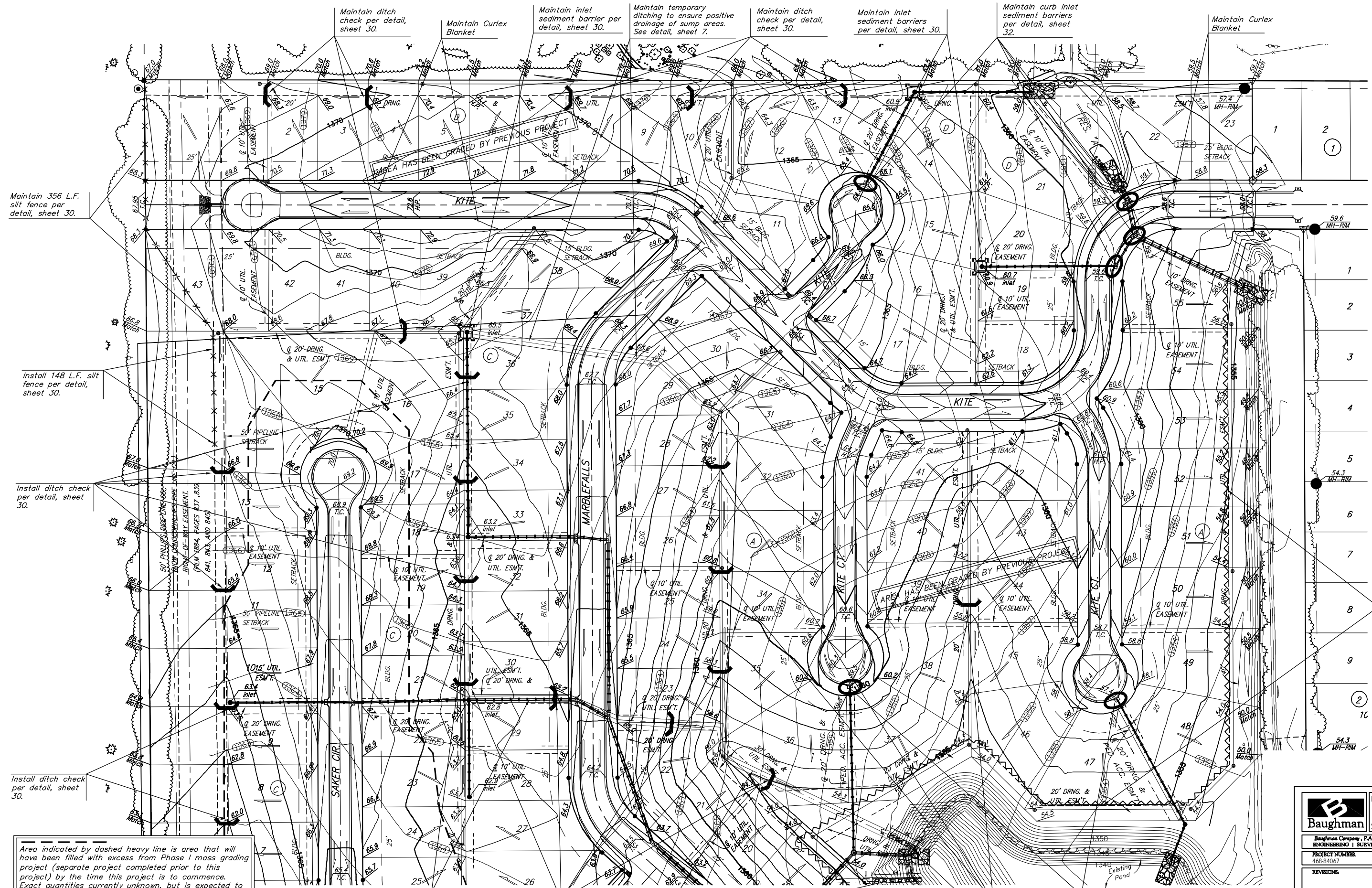


Scale: 1" = 60'



Maintain 356 L.F. silt fence per detail, sheet 30.

Install 148 L.F. silt fence per detail, sheet 30.

Install ditch check per detail, sheet 30.

Install ditch check per detail, sheet 30.

Area indicated by dashed heavy line is area that will have been filled with excess from Phase I mass grading project (separate project completed prior to this project) by the time this project is to commence. Exact quantities currently unknown, but is expected to be approximately 7,000 C.Y. over and above contours shown on this plan. Earthwork quantities for this project DO NOT account for this stockpile since exact quantity is unknown at time of project finalization.

Construct temporary ditching to ensure positive drainage of sump areas. See detail, sheet 7.

Install ditch check per detail, sheet 30.

Construct temporary ditching to ensure positive drainage of sump areas. See detail, sheet 7.

Install 42.7 S.Y. Light Stone Rip-rap as indicated.

Install 30.7 S.Y. Light Stone Rip-rap as indicated.

Maintain ditch check per detail, sheet 30.

Maintain curb inlet sediment barriers per detail, sheet 32.

**Baughman** FALCON FALLS 2ND/3RD/COMM. ADD.  
**MASS GRADING PLAN**  
 STORM WATER DRAIN #275

Baughman Company, P.A. 315 Ellis St. Wichita, KS 67211 F 316-262-7271 F 316-262-0149  
 ENGINEERING | SURVEYING | PLANNING | LANDSCAPE ARCHITECTURE

PROJECT NUMBER 468-84067	DESIGN AEG	DRAWN TMS
REVISIONS:	APPROVED	DATE 01/06
	SCALE Noted	SHEET 2 OF 39

Falcon Falls 2nd/Mass1 06-10-E377