

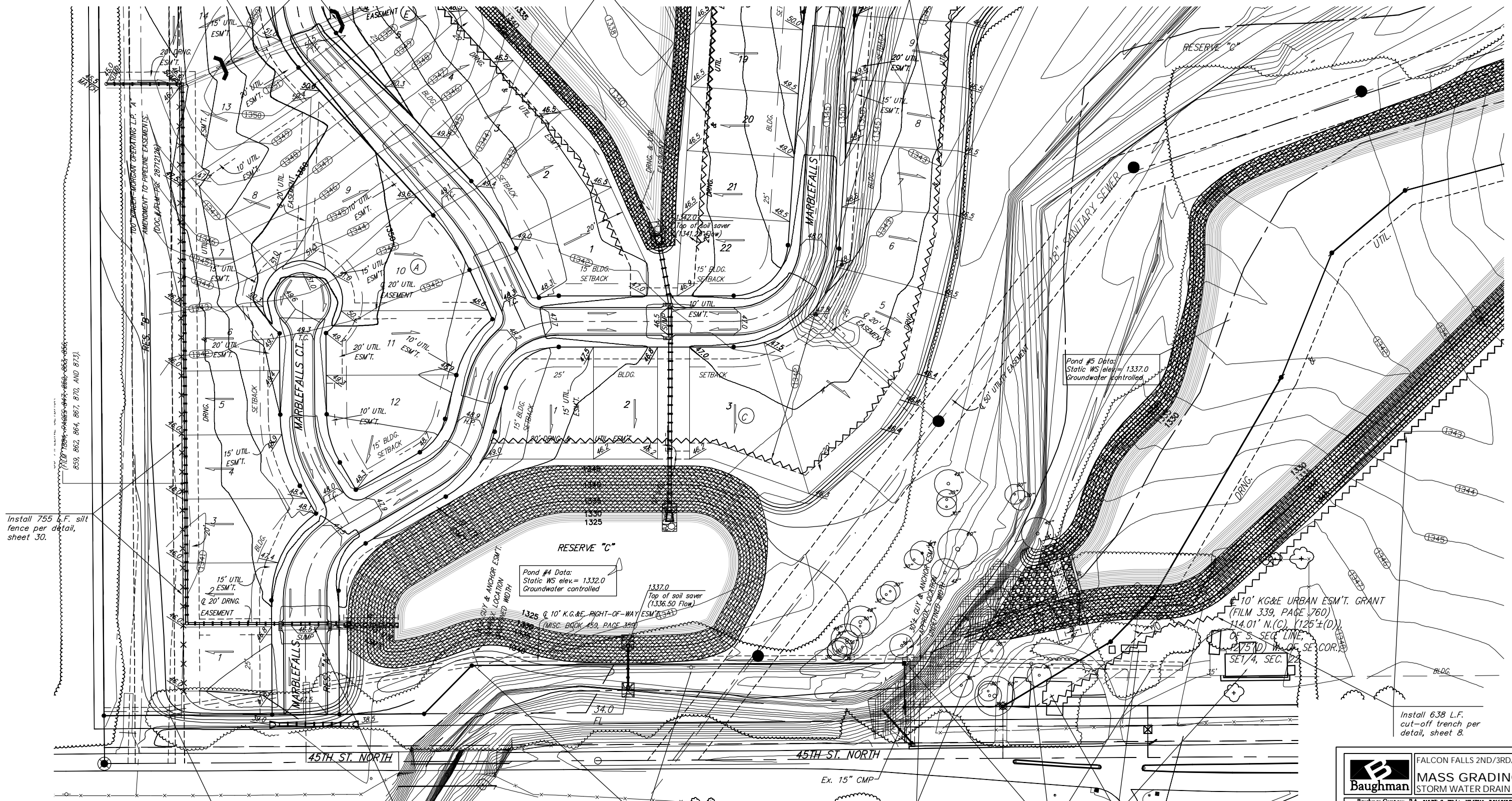
Construct temporary ditching to ensure positive drainage of sump areas. See detail, sheet 7.

Install ditch check per detail, sheet 30.

Install 647 L.F. cut-off trench per detail, sheet 8.

Install 1,024 L.F. cut-off trench per detail, sheet 8.

Scale: 1" = 60'



Install 755 L.F. silt fence per detail, sheet 30.

Pond #4 Data:  
Static WS elev. = 1332.0  
Groundwater controlled

Pond #5 Data:  
Static WS elev. = 1337.0  
Groundwater controlled

10' KG&E URBAN ESM'T. GRANT  
(FILM 339, PAGE 760)  
14.01' N.(C), 125'±(D)  
OF S. SEC. LINE  
175'(D) N. OF SE COR.  
SET 1/4, SEC. 22

Install 638 L.F. cut-off trench per detail, sheet 8.

Power poles and overhead electric to be removed. Contractor to contract Randy Truitt, Westar Energy (261-6512) to coordinate removal.

Construct temporary ditching to ensure positive drainage of sump areas. See detail, sheet 7.

Power poles and overhead electric to be removed. Contractor to contract Randy Truitt, Westar Energy (261-6512) to coordinate removal.

Existing rubble from channel bottom to top bank.

Power poles and overhead electric to be removed at no cost to Contractor. Contractor to contract Randy Truitt, Westar Energy (261-6512) to coordinate removal.

Contractor to remove all buildings, foundations, fences, rubble, and trash from SW corner of Lot 2, Block A, Falcon Falls Commercial Addition.

<b>Baughman</b>		FALCON FALLS 2ND/3RD/COMM. ADD.	
ENGINEERING   SURVEYING   PLANNING   LANDSCAPE ARCHITECTURE		MASS GRADING PLAN STORM WATER DRAIN #275	
PROJECT NUMBER 468-84067	DESIGN AEG	DRAWN TMS	DATE 01/06
REVISIONS:	APPROVED	SCALE Noted	SHEET 5 of 39
Falcon Falls 2nd/3rd/Comm Add		05-10-E377	