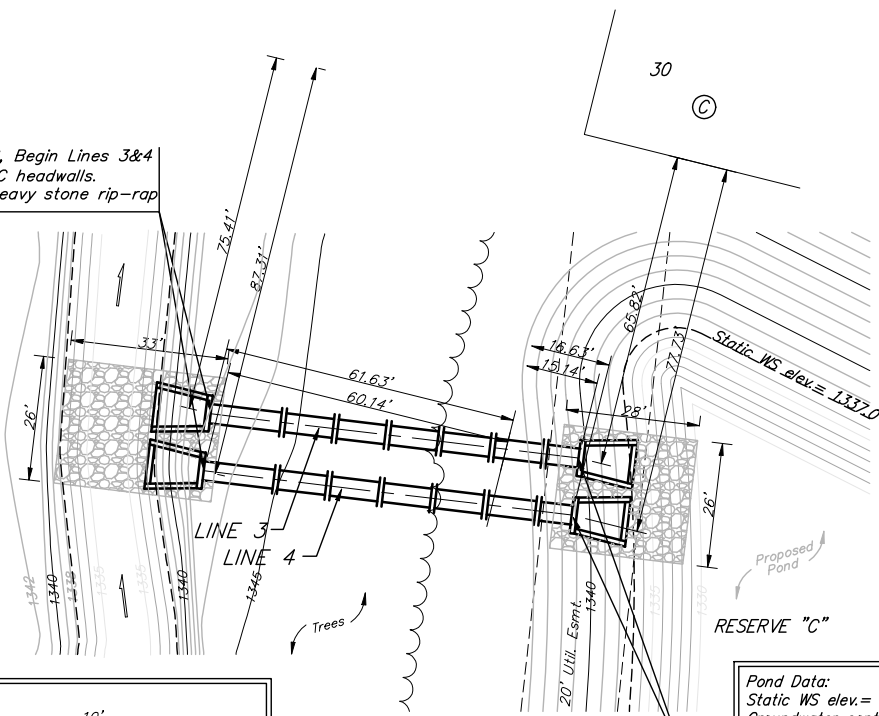


BENCHMARKS:
 BM #1: "□" CL face of catch basin, west side of Lot 4, Block 5, Falcon Falls Addition. Elev. = 1352.47 MSL

BM #2: "□" south end of the south curb return at Kite and Peregrine, Falcon Falls Addition. Elev. = 1359.85 MSL

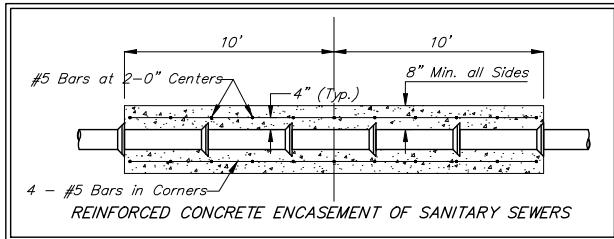
Sta 0+08.6, Begin Lines 3&4
 2 - 48" RC headwalls
 95.3 S.Y. heavy stone rip-rap



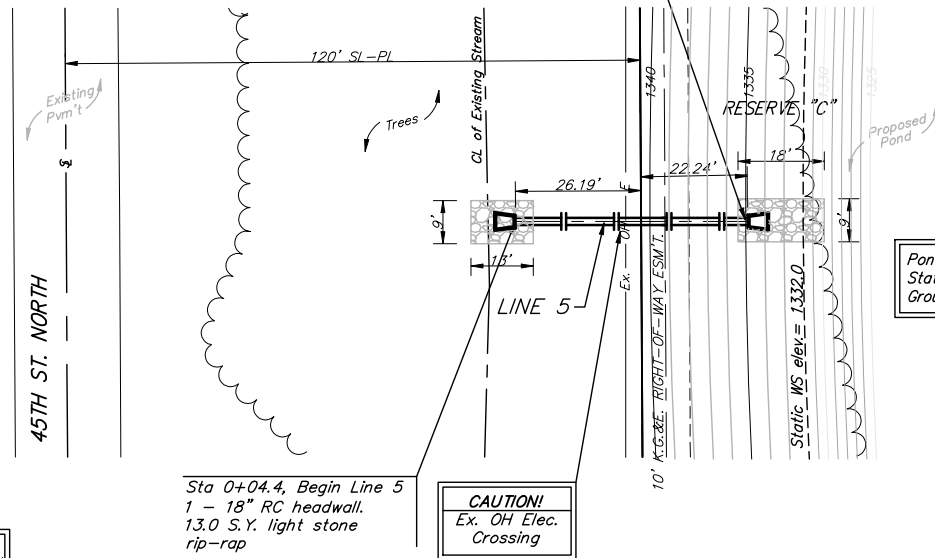
Pond Data:
 Static WS elev. = 1337.0
 Groundwater controlled

Sta 0+86.1, End Lines 3&4
 2 - 48" RC headwalls
 80.9 S.Y. heavy stone rip-rap.

Remove trees only as necessary for storm sewer construction and ONLY with permission of Developer or Baughman Co. Cost of removal to be incidental to lump sum bid item "Site Clearing & Restoration".



Scale: 1" = 20' Horizontal
 1" = 5' Vertical
 • = Iron

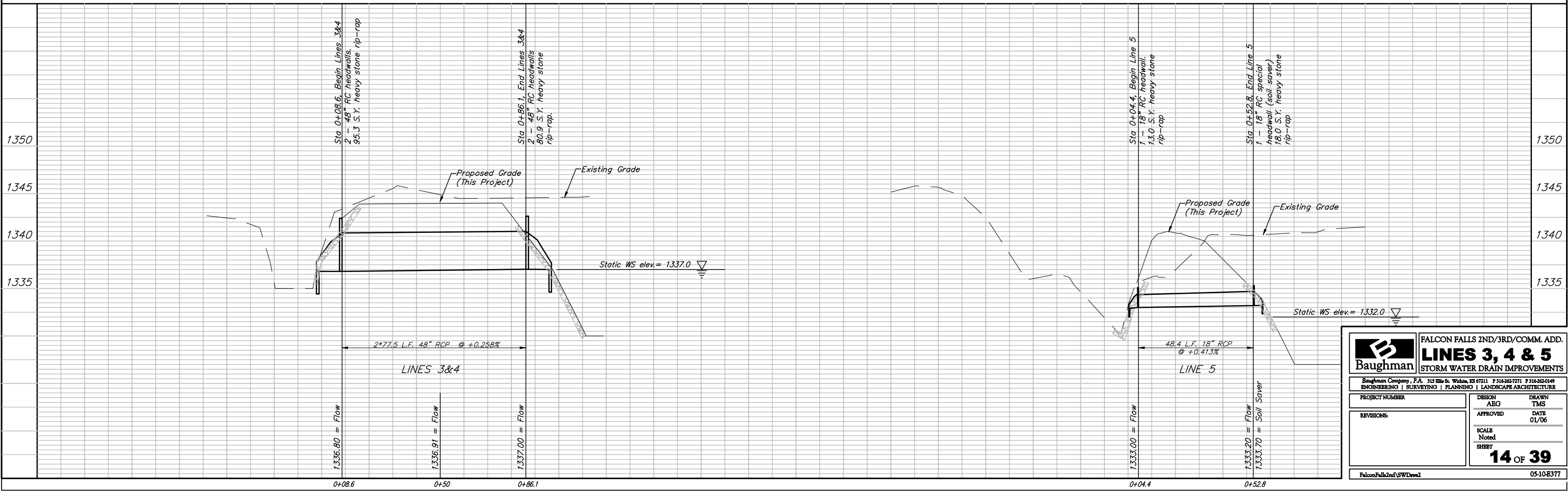


Sta 0+52.8, End Line 5
 1 - 18" RC special headwall (soil saver)
 18.0 S.Y. light stone rip-rap

Sta 0+04.4, Begin Line 5
 1 - 18" RC headwall.
 13.0 S.Y. light stone rip-rap

CAUTION!
 Ex. OH Elec. Crossing

Pond Data:
 Static WS elev. = 1332.0
 Groundwater controlled



		FALCON FALLS 2ND/3RD/COMM. ADD. LINES 3, 4 & 5 STORM WATER DRAIN IMPROVEMENTS	
		<small>Baughman Company, P.A. 315 Ellis St. Wichita, KS 67211 P 316-262-7771 F 316-262-0149 ENGINEERING SURVEYING PLANNING LANDSCAPE ARCHITECTURE</small>	
PROJECT NUMBER	DESIGN	DRAWN	
	ABG	TMS	
REVISIONS	APPROVED	DATE	
		01/06	
	SCALE	Noted	
	SHEET		
		14 OF 39	
FalconFalls2nd/3rd/CommAdd		05-10-E377	