

# STORM WATER DRAIN #277

to serve

# COPPER GATE NORTH ADDITION - PHASE II

## CITY OF WICHITA, KANSAS

James L. Armor, P.E. City Engineer

Project Number

468-84079

O.C.A. Number

751428

### GENERAL NOTES:

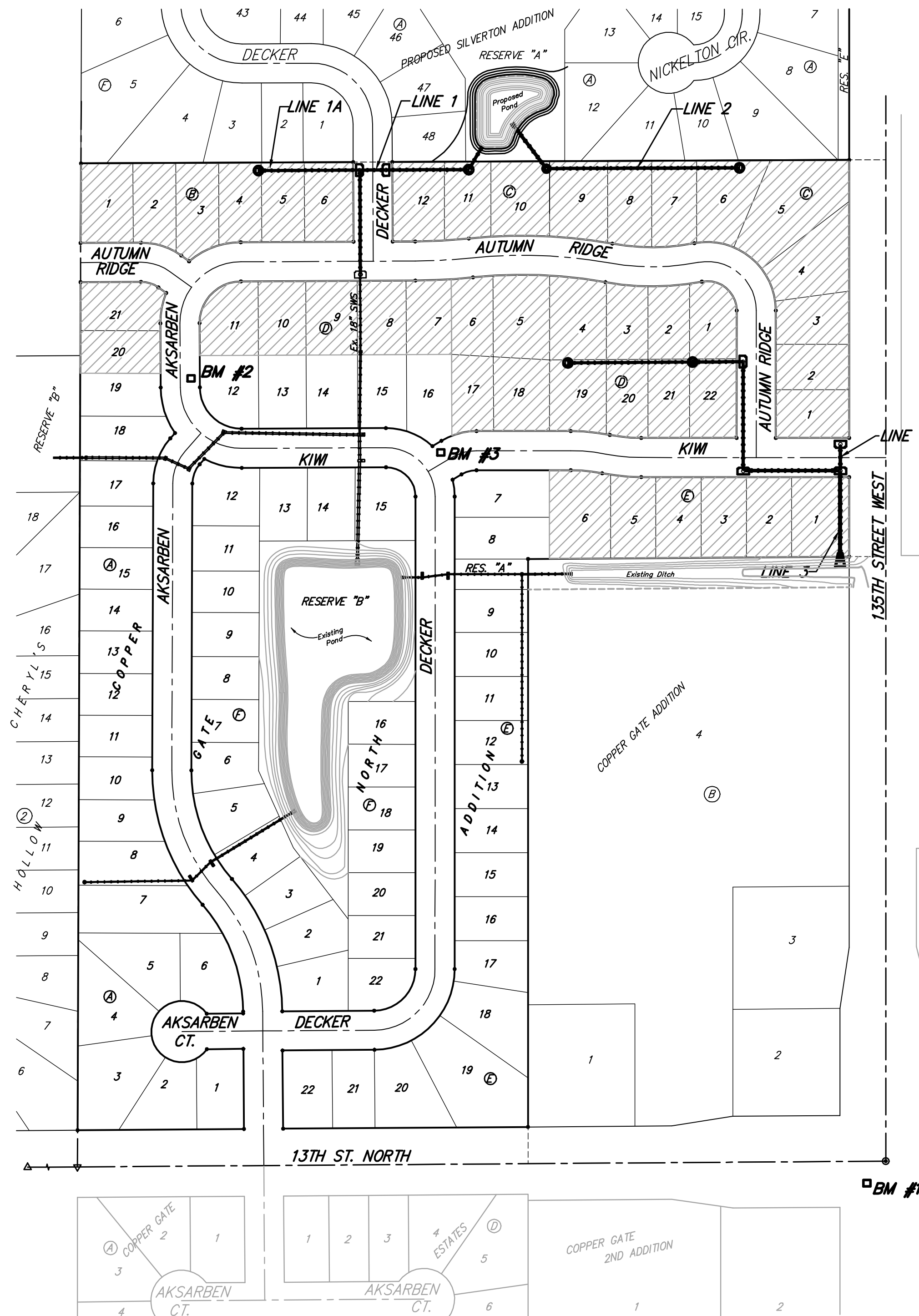
- Contractor will be required to provide notice to utility companies a minimum of forty-eight (48) hours prior to any excavation, as follows:

Kansas One-Call 687-2470

The Contractor must notify the following in case of an emergency:

Cox Communications 262-4270  
 Kansas Gas Service 1-888-482-4950  
 Westar Energy 383-8650  
 Aquila Energy 1-800-303-0357  
 SBC 268-2245  
 City of Wichita Water Dept. 268-4563  
 City of Wichita Sewer Maint. 268-4024  
 City of Wichita Storm Sewer Maint. 268-4090  
 City of Wichita Traffic Maint. 268-4034  
 Conoco Phillips Pipeline Co. 1-877-267-2290  
 Southern Star Pipeline Co. 529-6600  
 Kinder-Morgan Pipeline Co. 1-888-844-5658

- Utility service lines, poles, valve boxes, meters, and etcetera are to be adjusted as necessary by others prior to construction unless the plans specifically call for their adjustment by the Contractor or unless the plans specifically identify a utility to be adjusted by its owner during construction. Existing utilities and their location, as shown on the plans, represent the best information obtainable for design. The Contractor will be required to work around existing utilities within the right-of-way which do not conflict with proposed construction.
- Rubble from the removal of miscellaneous structures and excess excavation which is to be wasted shall be disposed of on sites to be provided by the Contractor. These sites shall be approved by the Engineer as to suitability, appearance and site location. Locations, in the opinion of the Engineer, that will leave an unsightly appearance will not be approved. All disposal sites must be approved by the Kansas Department of Health and Environment. Material either stockpiled or disposed of in a flood plain would require a Kansas State Board of Agriculture permit. Any material dumped in waters of the United States or wetlands is subject to U.S. Corps. of Engineers permitting regulations. Any material buried or stockpiled beyond approved construction limits would require additional archaeological investigations unless buried in a previously approved borrow location.
- Trees and shrubs in public right-of-way which are in direct conflict with proposed new construction shall be removed by the Contractor with the Engineer's approval. Trees and shrubs which are not in direct conflict with proposed new construction shall be saved and protected from damage.
- The Contractor shall give all property owners and/or tenants of developed property abutting the construction of this project a minimum of ten (10) days notice prior to start of construction.
- The Contractor shall be responsible for preserving property irons. The Contractor will be required to re-establish any property irons which are damaged or destroyed by his construction operations. Such irons shall be re-established by a licensed land surveyor in accordance with state laws.
- All existing and proposed erosion control measures including silt fencing, erosion control mat, straw bales, inlet barriers, and const. entrance shall be maintained throughout construction by the contractor and until project is accepted by the City of Wichita. The on-site engineer shall complete weekly reports on the status of erosion control measures. The contractor shall be required to comply with maintenance and/or replacement of erosion control measures as determined by the on-site engineer until project is accepted by City of Wichita. Maintenance and/or replacement of erosion control measures to be paid by L.S. bid item "Site Clearing & Restoration".
- Easements shall be graded and seeded as indicated on Easement Grading Plan.
- The developer for this project is Paul E. Kelsey, (316) 722-1077



### Benchmarks

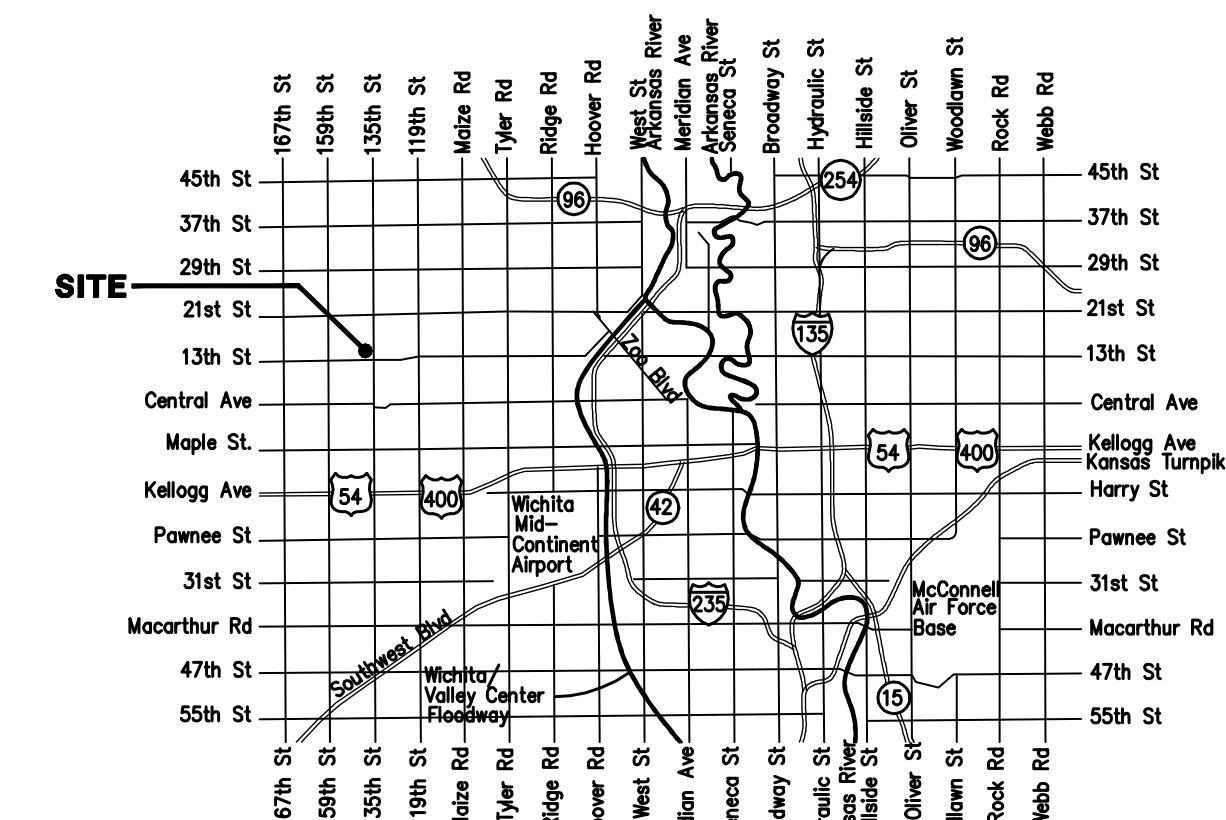
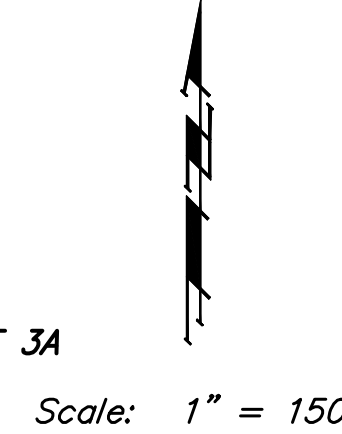
BM #1: C.O.W. disc at SW corner of intersection.  
 30.00'± S. of CL of 13th St. N.  
 35.00'± W. of CL of 135th St. W.  
 Elev. = 168.25 City Datum

BM #2: "□" Cut in Top of Curb  
 10' South of end of Existing Pavement, East Curb adjacent to Lot 12, Block D, Copper Gate North Addition.  
 Elev. = 174.73 City Datum

BM #3: BM Disc in top Curb  
 Adjacent to Fire Hydrant at E. End of N. Curb Return of Kiwi & Decker.  
 Elev. = 173.64 City Datum

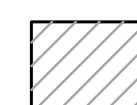
### Sheet Index

Title Sheet	1
Line 1	2
Line 1A	3
Line 2	4
Line 3	5-7
Line 3A	5
Std. Type 1A Single Inlet Detail	8
Special Yard Inlet Detail	9
Std. Shallow Manhole Detail	10
Ring & Cover Detail	11
RC Headwall Detail	12
Lot Grading/Esmt. Grading/ Erosion Control Plan	13
Erosion Control BMP Details	14-17
Temp. Pond Plan	18
Pond Cross Sections	19
Coordinate Sheet	20
Copy of Plat	21



Vicinity Map

Benefit District



Baughman Company, P.A. 315 Ellis St. Wichita, KS 67211 P 316-262-7271 F 316-262-0145  
 ENGINEERING | SURVEYING | PLANNING | LANDSCAPE ARCHITECTURE