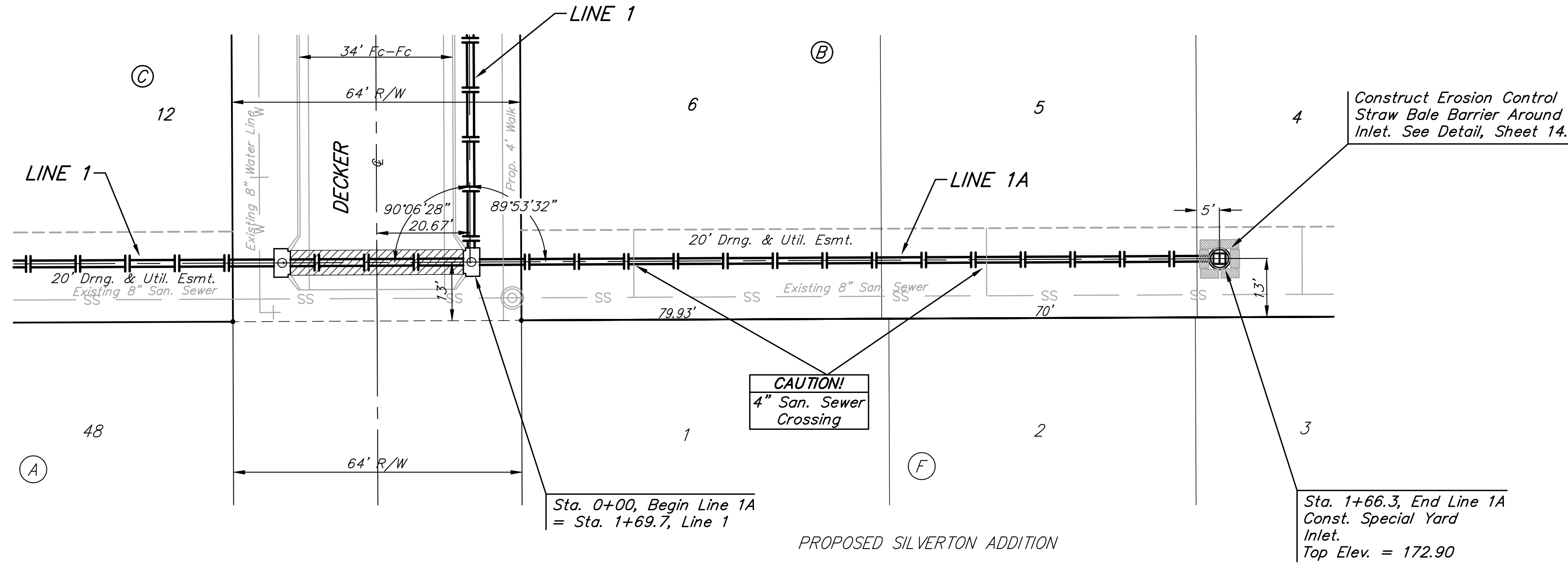


BENCHMARKS:
 BM #1: C.O.W. disc at SW corner of intersection.
 30.00'± S. of CL of 13th St. N.
 35.00'± W. of CL of 135th St. W.
 Elev. = 168.25 City Datum

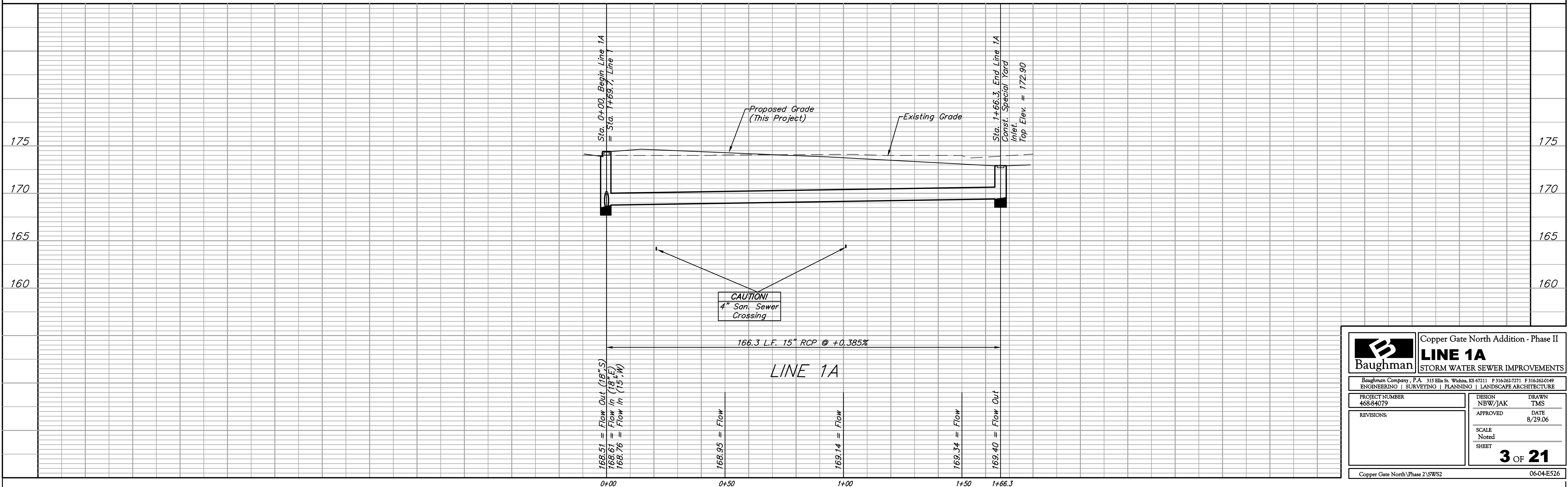
BM #2: "□" Cut in Top of Curb
 10' South of end of Existing Pavement, East Curb adjacent to Lot 12, Block D, Copper Gate North Addition.
 Elev. = 174.73 City Datum

BM #3: BM Disc in top Curb Adjacent to Fire Hydrant at E. End of N. Curb Return of Kiwi & Decker.
 Elev. = 173.64 City Datum

COPPER GATE NORTH ADDITION



Scale: 1" = 20' Horizontal
 1" = 5' Vertical
 • = Iron



| | | | |
|--|-------------------|---------------------------------------|-----------------|
| | | Copper Gate North Addition - Phase II | |
| | | LINE 1A | |
| STORM WATER SEWER IMPROVEMENTS | | | |
| <small>Baughman Company, P.A. 315 Ellis St. Wichita, KS 67211 P 316-262-7271 F 316-262-0149 ENGINEERING SURVEYING PLANNING LANDSCAPE ARCHITECTURE</small> | | | |
| PROJECT NUMBER 468-84079 | DESIGN NBW/JAK | DRAWN TMS | DATE 8/29/06 |
| REVISIONS: | SCALE Noted | | |
| | SHEET | | |
| | | | 3 OF 21 |
| Copper Gate North\Phase 2\SWS2 | | | 06-04-E526 |