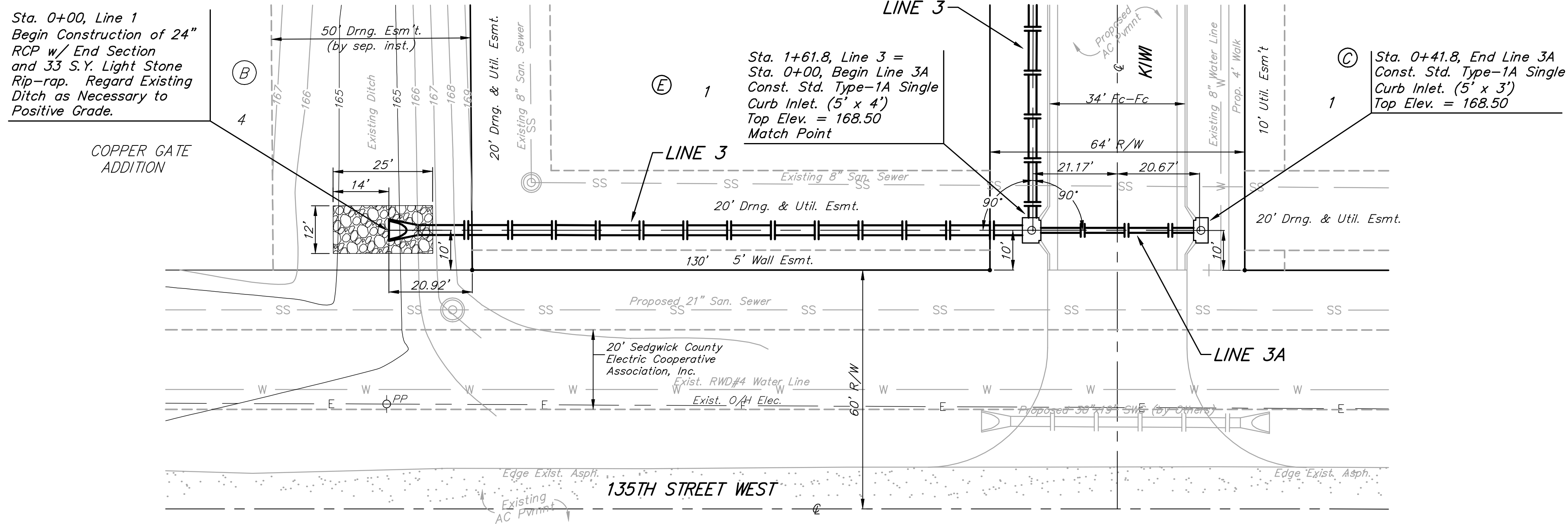


BENCHMARKS:
 BM #1: C.O.W. disc at SW corner of intersection.
 30.00'± S. of CL of 13th St. N.
 35.00'± W. of CL of 135th St. W.
 Elev. = 168.25 City Datum

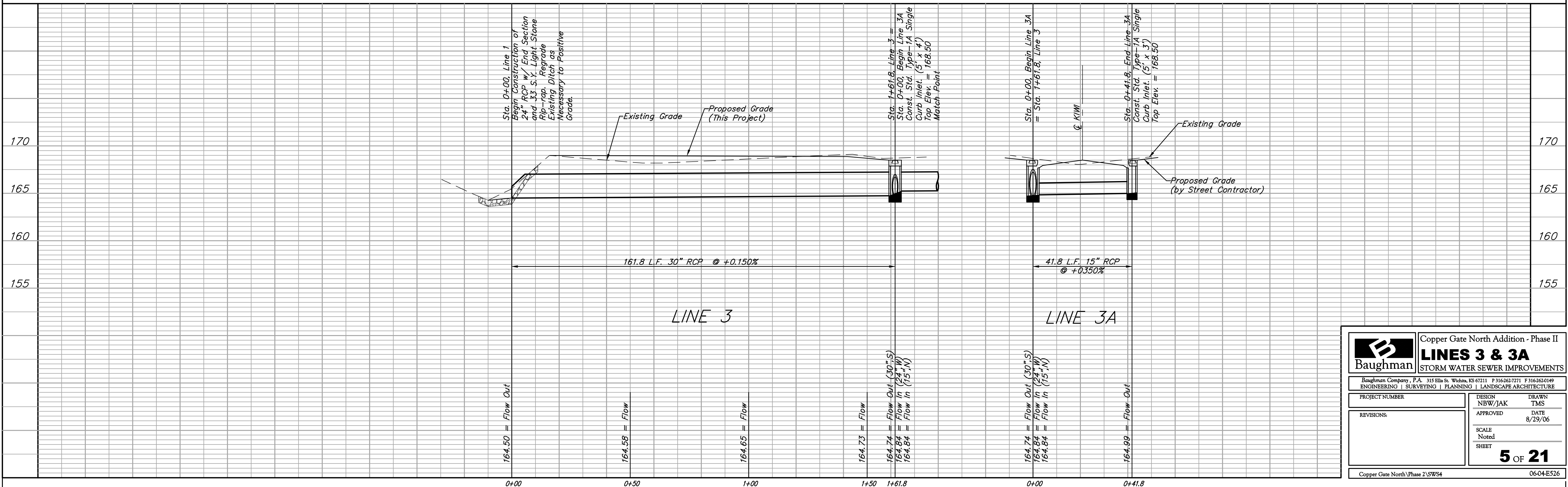
BM #2: "□" Cut in Top of Curb
 10' South of end of Existing Pavement, East Curb adjacent to Lot 12, Block D, Copper Gate North Addition.
 Elev. = 174.73 City Datum

BM #3: BM Disc in top Curb
 Adjacent to Fire Hydrant at E. End of N. Curb Return of Kiwi & Decker.
 Elev. = 173.64 City Datum

COPPER GATE NORTH ADDITION



Scale: 1" = 20' Horizontal
 1" = 5' Vertical
 • = Iron



		Copper Gate North Addition - Phase II	
		LINES 3 & 3A	
STORM WATER SEWER IMPROVEMENTS			
Baughman Company, P.A. 315 Ellis St. Wichita, KS 67211 P 316-262-7271 F 316-262-0149			
ENGINEERING SURVEYING PLANNING LANDSCAPE ARCHITECTURE			
PROJECT NUMBER	DESIGN	DRAWN	
	NBW/JAK	TMS	
REVISIONS:	APPROVED	DATE	
		8/29/06	
	SCALE		
	Noted		
	SHEET		
			5 OF 21
Copper Gate North\Phase 2\SWS4			06-04-E526