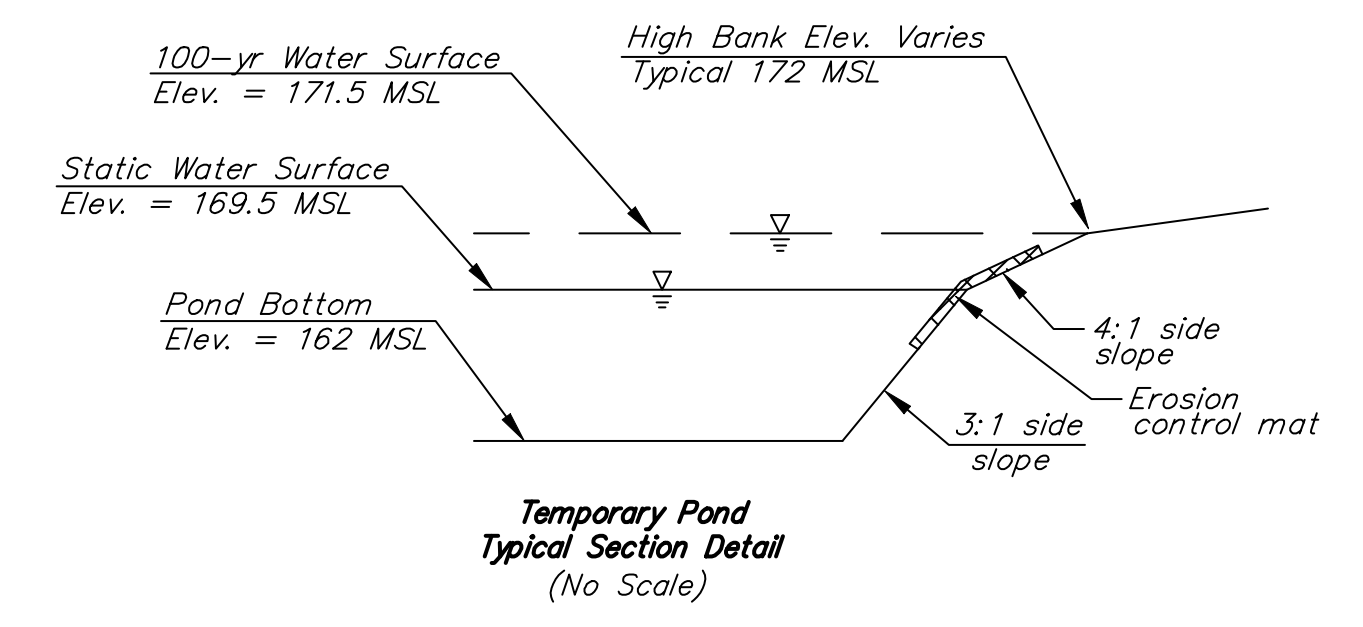
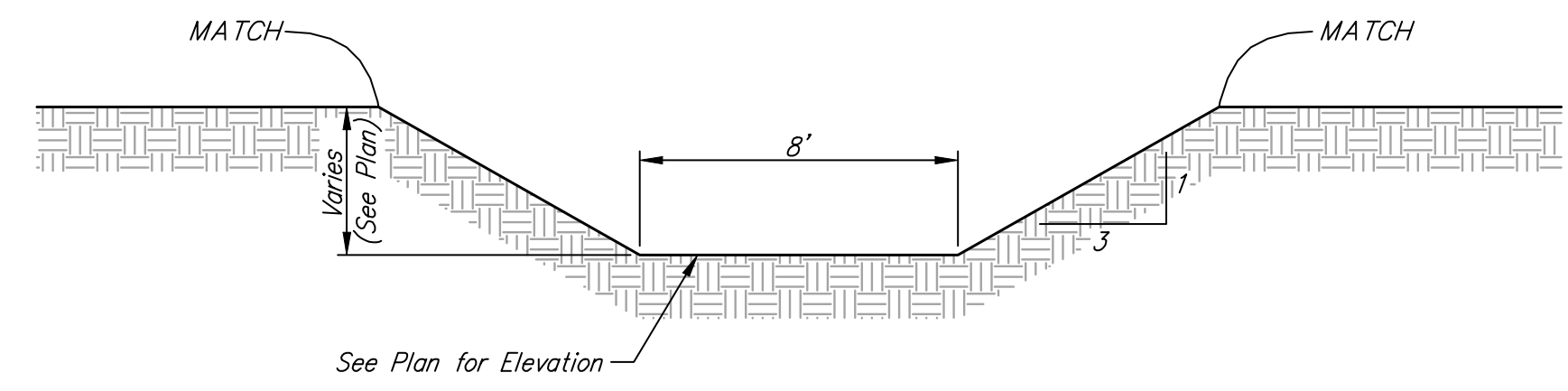
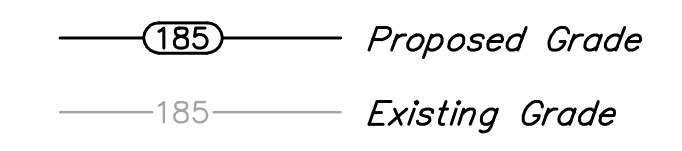


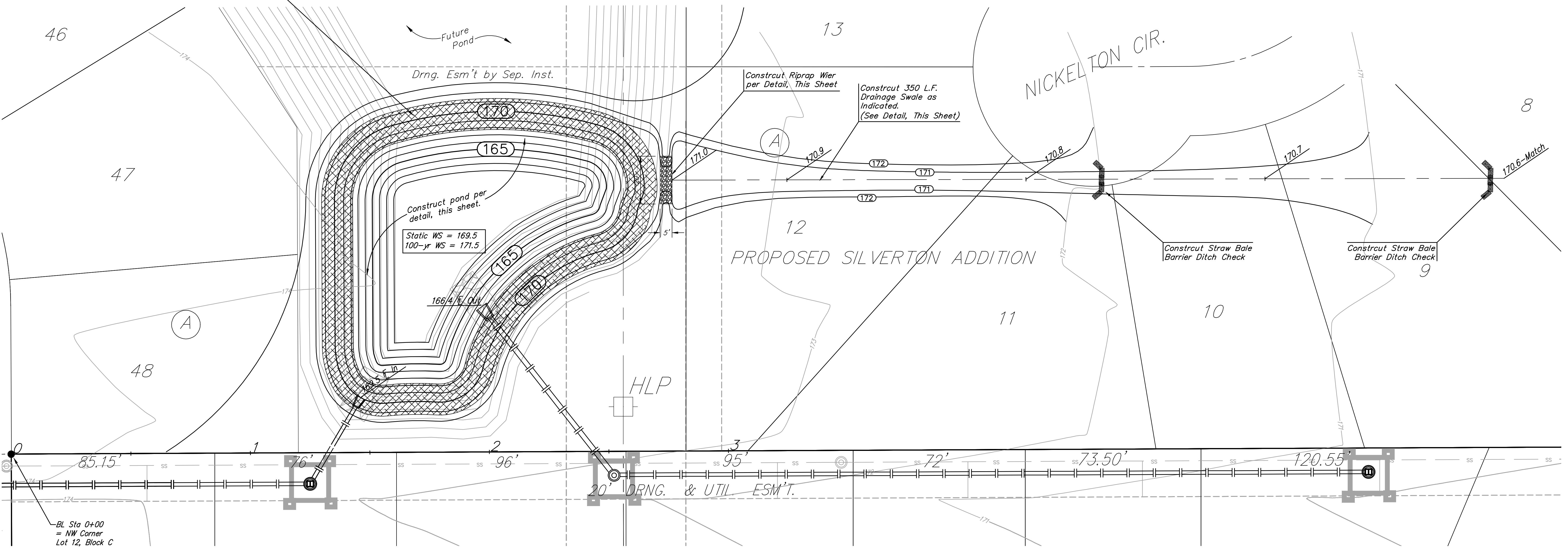
| EARTH WORK TOTALS | | |
|-------------------------|-----------------|--------------|
| | C.Y. Excavation | C.Y. Fill |
| Lot/Esm't. Grading | 314 | 3,116 |
| Temp. Pond Construction | 3,907 | 0 |
| Total | 4,221 | 3,116 |

Earthwork quantities are for reference only. All cost associated with lot & easement grading shall be incidental to lump sum bid item "Lot/Esm't. Grading".

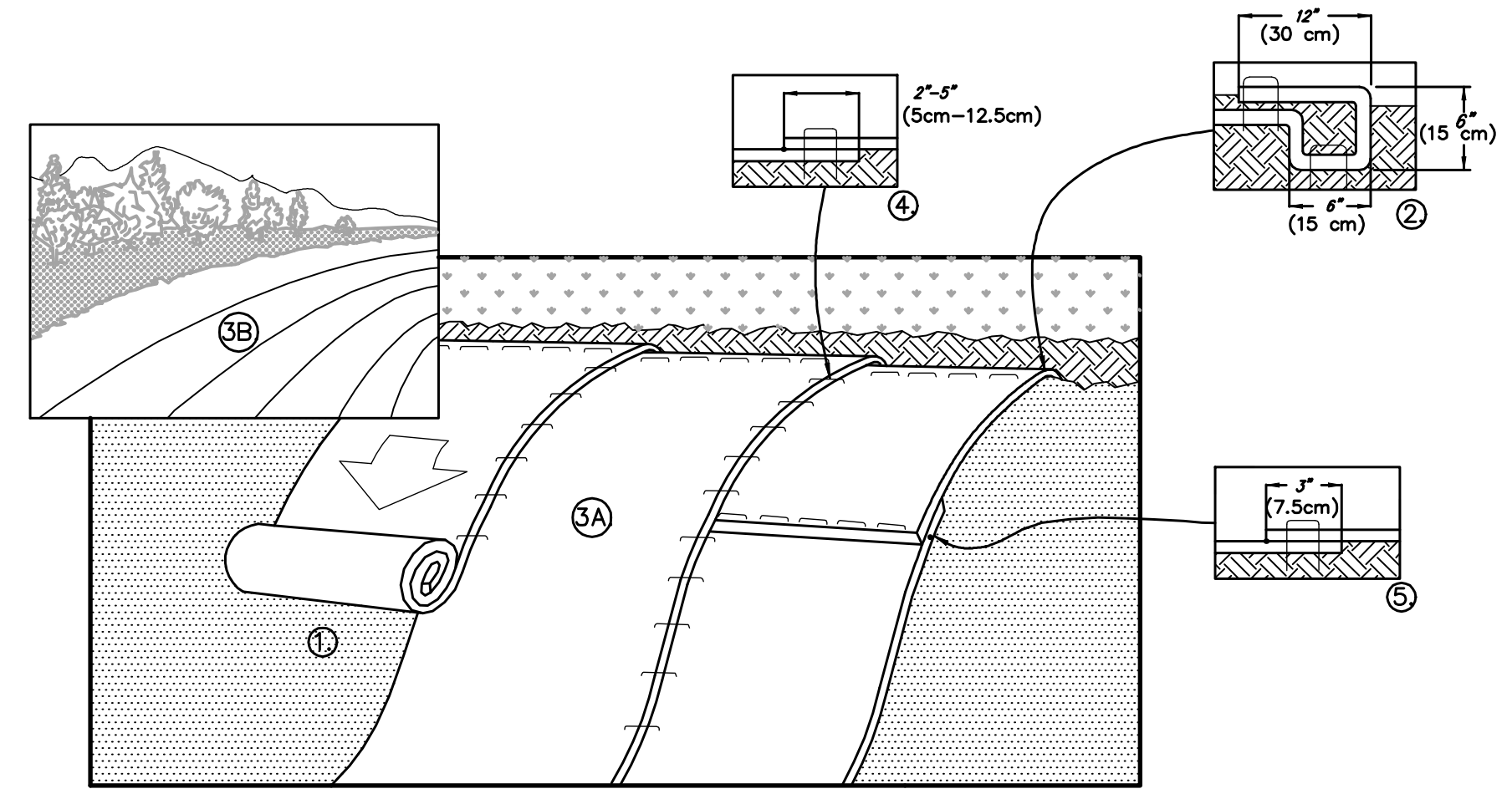
Install 592 S.Y. North American Green Erosion Control Mat S150BN, or approved equal. Erosion control mat shall be installed and anchored per details, this sheet. Note: This quantity does not include excess material necessary for overlap and anchoring.



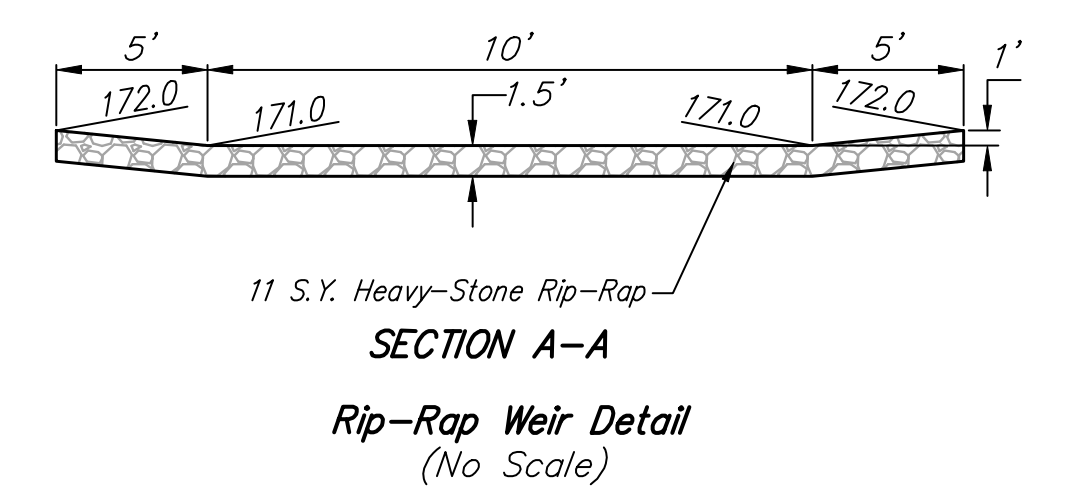
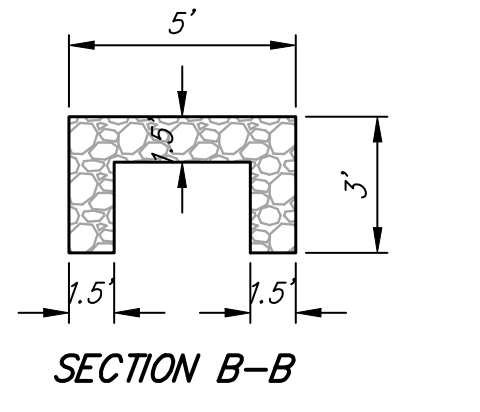
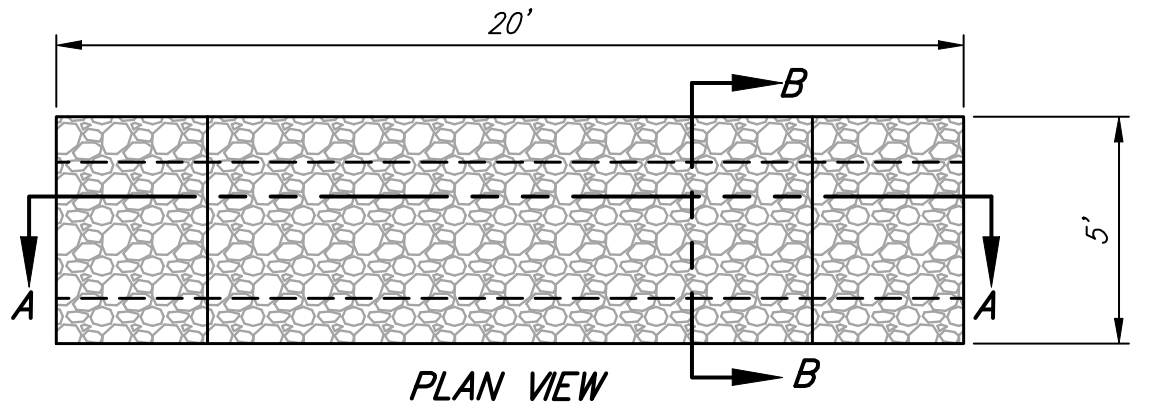
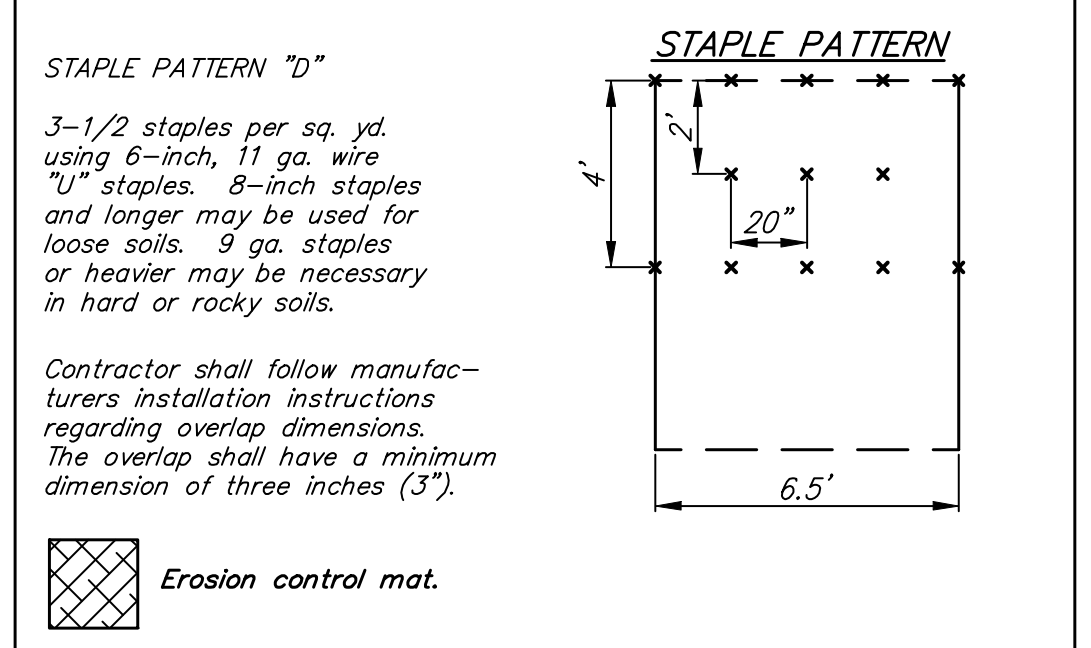
Scale: 1" = 20'



SLOPE INSTALLATION



- NOTES:
1. Prepare soil before installing blankets, including any necessary application of lime, fertilizer, and seed. Note: When using cell-o-seed do not seed prepared area. Cell-o-seed must be installed with paper side down.
 2. Begin at the top of the slope by anchoring the blanket in a 6" (15cm) deep x 6" (15cm) wide trench with approximately 12" (30cm) of blanket extended beyond the up-slope portion of the trench. Anchor the blanket with a row of staples/stakes approximately 12" (30cm) apart in the bottom of the trench. Backfill and compact the trench after stapling. Apply seed to compacted soil and fold remaining 12" (30cm) portion of blanket back over seed and compacted soil. Secure blanket over compacted soil with a row of staples/stakes spaced approximately 12" (30cm) apart across the width of the blanket.
 3. Roll the blankets (a) down or (b) horizontally across the slope. Blankets will unroll with appropriate side against the soil surface. All blankets must be securely fastened to soil surface by placing staples/stakes in appropriate locations as shown in the staple pattern guide. When using optional dot system, staples/stakes should be placed through each of the colored dots corresponding to the appropriate staple pattern.
 4. The edges of parallel blankets must be stapled with approximately 2"-5" (5cm-12.5cm) overlap depending on blanket type. To ensure proper seam alignment, place the edge of the overlapping blanket (blanket being installed on top) even with the colored seam stitch on the previously installed blanket.
 5. Consecutive blankets spliced down the slope must be placed end over end (shingle style) with an approximate 3" (7.5cm) overlap. Staple through overlapped area, approximately 12" (30cm) apart across entire blanket width.
- NOTE: *In loose soil conditions, the use of staple or stake lengths greater than 6" (15cm) may be necessary to properly secure the blankets.



| | | |
|---|---|--|
| | Copper Gate North Addition - Phase II | |
| | Temporary Pond Storm Water Drain Improvements | |
| Baughman Company, P.A. 315 Ellis St. Wichita, KS 67211 P 316-362-7271 F 316-362-0149 ENGINEERING SURVEYING PLANNING LANDSCAPE ARCHITECTURE | PROJECT NUMBER 468-84079 | DESIGN NBW/JAK DRAWN TMS APPROVED DATE 8/29/06 |
| REVISIONS: | SCALE 1" = 20' SHEET | 18 OF 21 |