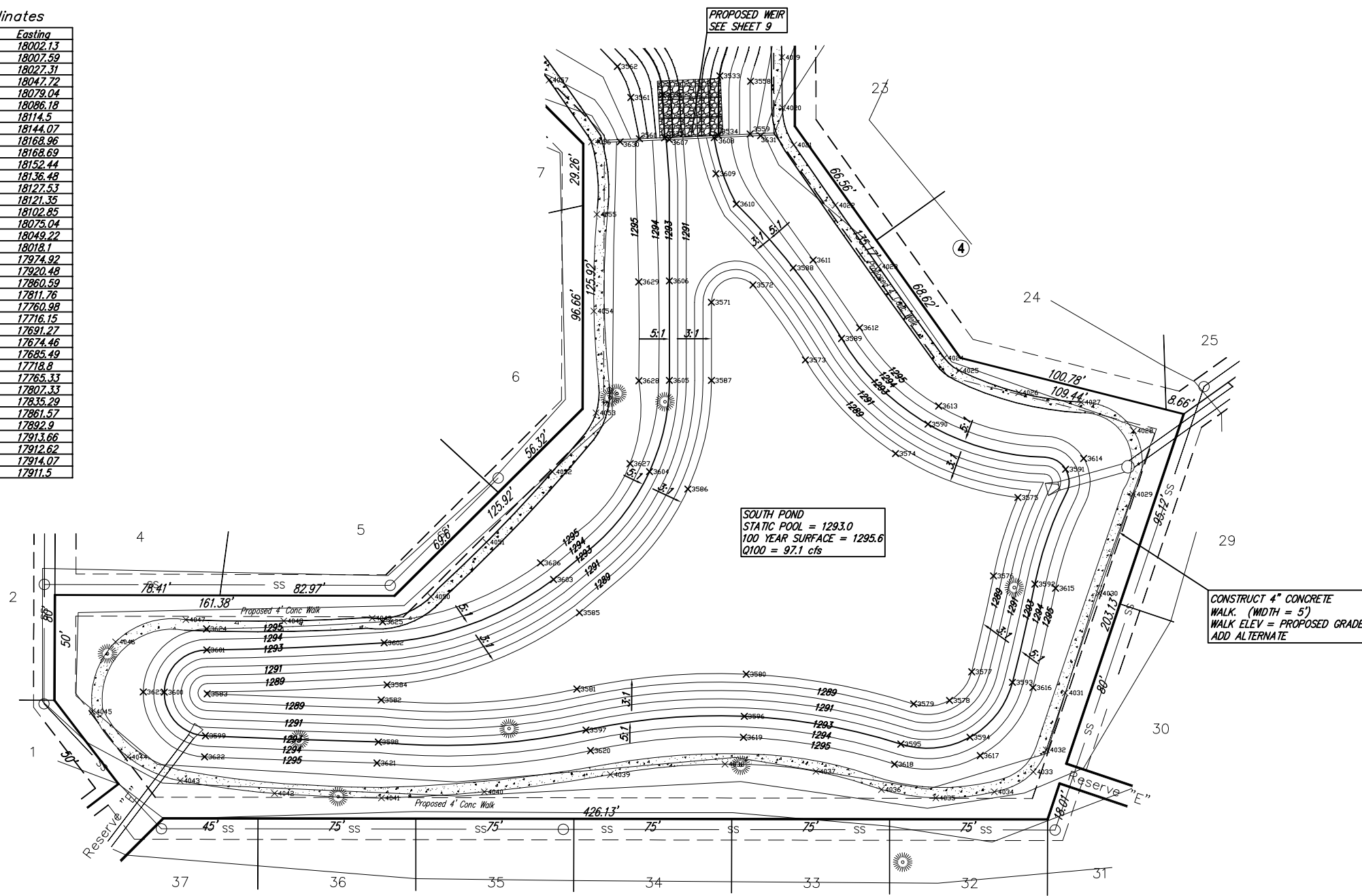


Walk Coordinates

Number	Northing	Easting
4020	17998.7	18002.13
4021	17981.16	18007.59
4022	17952.46	18027.31
4023	17923.38	18047.72
4024	17879.95	18079.04
4025	17873.97	18086.18
4026	17863.48	18114.5
4027	17858.95	18144.07
4028	17845.4	18168.96
4029	17815.17	18168.69
4030	17768.11	18152.44
4031	17720.85	18136.48
4032	17693.81	18127.53
4033	17683.33	18121.35
4034	17673.8	18102.85
4035	17670.97	18075.04
4036	17674.93	18049.22
4037	17683.56	18018.1
4038	17687	17974.92
4039	17682.04	17920.48
4040	17673.84	17860.59
4041	17670.91	17811.76
4042	17673.09	17760.98
4043	17679.1	17716.15
4044	17690.41	17691.27
4045	17711.94	17674.46
4046	17745.09	17685.49
4047	17755.61	17718.8
4048	17755.01	17765.33
4049	17756.31	17807.33
4050	17766.55	17835.29
4051	17792.44	17861.57
4052	17825.82	17892.9
4053	17853.86	17913.66
4054	17902.21	17912.62
4055	17948.14	17914.07
4056	17982.54	17911.5

Pond Coordinates

#	Northing	Easting	Elev
3571	17906.37	17968.48	1288.00
3572	17914.61	17988.21	1288.00
3573	17878.95	18013.11	1288.00
3574	17834.49	18055.93	1288.00
3575	17813.63	18114.02	1288.00
3576	17776.43	18102.49	1288.00
3577	17730.85	18092.09	1288.00
3578	17717.28	18081.59	1288.00
3579	17715.58	18064.51	1288.00
3580	17729.72	17985.01	1288.00
3581	17722.70	17904.58	1288.00
3582	17717.49	17811.63	1288.00
3583	17720.43	17728.99	1288.00
3584	17724.70	17814.41	1288.00
3585	17758.92	17905.77	1288.00
3586	17817.64	17957.26	1288.00
3587	17869.27	17968.50	1288.00
3588	17922.70	18007.33	1293.00
3589	17889.18	18030.29	1293.00
3590	17848.50	18071.33	1293.00
3591	17827.07	18136.71	1293.00
3592	17772.53	18122.10	1293.00
3593	17725.86	18111.46	1293.00
3594	17699.78	18091.27	1293.00
3595	17696.52	18058.46	1293.00
3596	17709.74	17984.13	1293.00
3597	17703.18	17908.91	1293.00
3598	17697.52	17810.29	1293.00
3599	17700.45	17728.14	1293.00
3600	17721.16	17708.60	1293.00
3601	17741.24	17728.79	1293.00
3602	17744.65	17813.00	1293.00
3603	17774.69	17893.46	1293.00
3604	17825.96	17939.08	1293.00
3605	17869.25	17948.50	1293.00
3606	17916.53	17948.47	1293.00
3607	17983.63	17948.47	1293.00
3608	17984.56	17969.76	1293.00
3609	17967.43	17970.65	1293.00
3610	17953.03	17980.30	1293.00
3611	17926.44	18016.79	1295.00
3612	17894.30	18038.88	1295.00
3613	17857.13	18076.37	1295.00
3614	17832.20	18145.29	1295.00
3615	17770.57	18131.91	1295.00
3616	17723.37	18121.14	1295.00
3617	17691.04	18096.12	1295.00
3618	17686.99	18055.43	1295.00
3619	17699.74	17983.68	1295.00
3620	17693.42	17911.08	1295.00
3621	17687.54	17808.63	1295.00
3622	17690.46	17727.72	1295.00
3623	17721.32	17698.60	1295.00
3624	17751.24	17728.69	1295.00
3625	17754.63	17812.29	1295.00
3626	17782.59	17887.32	1295.00
3627	17829.72	17929.83	1295.00
3628	17869.11	17934.00	1295.00
3629	17916.07	17933.97	1295.00
3630	17982.62	17925.12	1295.00
3631	17985.52	17991.85	1295.00



SOUTH POND  
 STATIC POOL = 1293.0  
 100 YEAR SURFACE = 1295.6  
 Q100 = 97.1 cfs

CONSTRUCT 4" CONCRETE  
 WALK. (WIDTH = 5')  
 WALK ELEV = PROPOSED GRADE  
 ADD ALTERNATE



SCALE 1" = 30'

NOTE: THE POND BOTTOM AND SIDES ARE TO BE SCARIFIED A MINIMUM OF 8 INCHES, MOISTURE CONDITIONED AND RECOMPACTED TO A MINIMUM OF 95 PERCENT OF STANDARD PROCTOR DENSITY (ASTM D-698) FROM MINUS 3 TO PLUS 3 PERCENT OF OPTIMUM MOISTURE CONTENT.  
 ALL GYPSUM/CALICHE SEAMS, SANDY CLAY AND CLAY SHALE ENCOUNTERED SHOULD BE OVER-EXCAVATED A MINIMUM OF 1 FOOT AND REPLACED WITH CLAY.  
 MINIMUM PI OF THE SOIL USED FOR THE POND LINER IS 30.

Whispering Lakes Addition  
 Erosion Control Map  
 WICHITA, KANSAS

**Ruggles & Bohm, P.A.**  
 Engineering, Surveying, Land Planning

924 North Main  
 Wichita, Kansas 67203  
 www.rbkansas.com

(316) 264-8008  
 (316) 264-4621 fax  
 E-mail: info@rbkansas.com

DESIGN	EG	SHEET 7 OF 27
DRAWN	EG	
REVIEW	EG	
DRAWING FILE	PROJECT NUMBER	DATE
paving {Whispering Lakes}	468-84143	