

GRADE 10 FT WIDE AREA DOWNSTREAM OF END SECTION TO MATCH FLOW 3.5' @ 3.0% USE A 4:1 BACKSLOPE

STA 1+08.37, LINE 3 BEGIN SWS CONSTRUCTION INSTALL 48" END SECTION PLACE 66.7 SQ YDS HEAVY STONE RIP-RAP

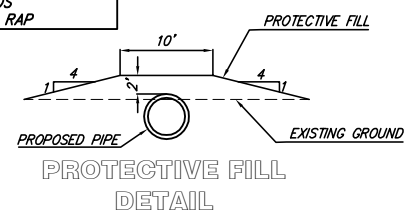
STA 2+00, LINE 3 CONSTRUCT SHALLOW TYPE "P" MH DIAMETER = 6.0' TOP ELEV = 1289.75

75 L.F. PROTECTIVE FILL SEE NOTE THIS SHEET

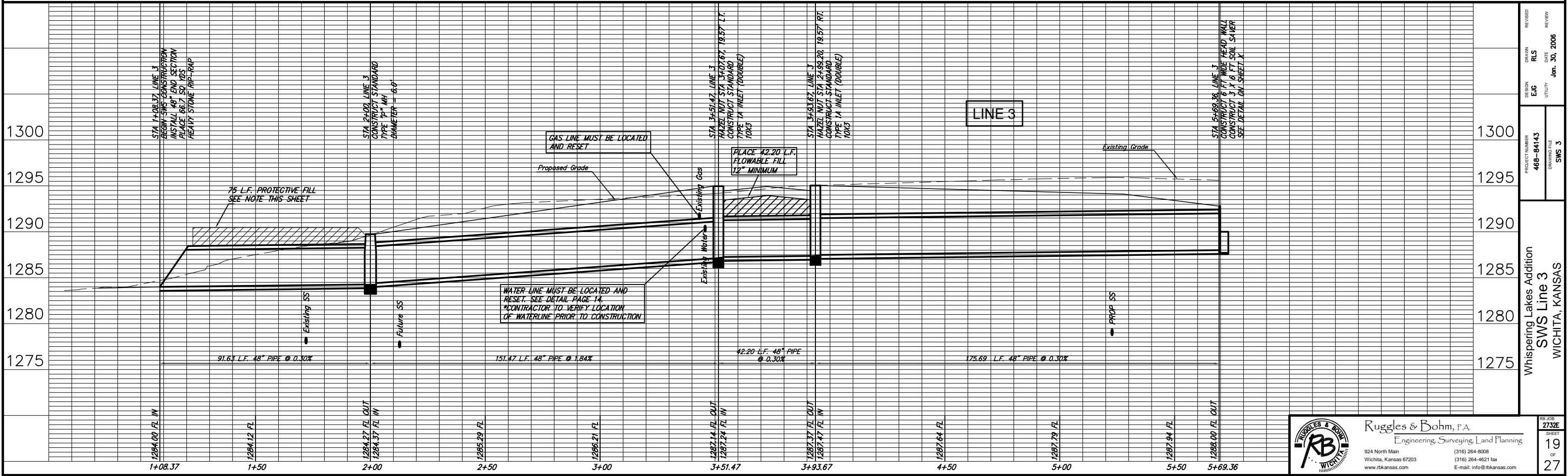
CONTACT KANSAS GAS SERVICE PRIOR TO CONSTRUCTION. KANSAS GAS WILL HAVE A REPRESENTATIVE ON SITE DURING SWS CONSTRUCTION IN THE AREA OF EXISTING 4" PLASTIC GAS MAIN.

PLACE 42.20 L.F. FLOWABLE FILL 12" MINIMUM

STA 5+69.36, LINE 3 CONSTRUCT 6 FT WIDE HEAD WALL CONSTRUCT 3 X 6 FT SOIL SAVER SEE DETAIL ON SHEET 23 PLACE 12.5 SQ YDS HEAVY STONE RIP RAP



SCALE 1" = 20'



REVISION	DATE	BY	CHKD
REVISED	Jan. 30, 2006	RLS	EJG
PROJECT NUMBER	DRAWING FILE	UTILITY	REVIEW
468-84143	SWS 3		
Whispering Lakes Addition SWS Line 3 WICHITA, KANSAS			
PROJECT NUMBER	DATE	BY	CHKD
468-84143	Jan. 30, 2006	RLS	EJG
PROJECT NUMBER	DATE	BY	CHKD
468-84143	Jan. 30, 2006	RLS	EJG

**Ruggles & Bohm, P.A.**  
 Engineering, Surveying, Land Planning  
 924 North Main  
 Wichita, Kansas 67203  
 www.rbkansas.com  
 (316) 264-8008  
 (316) 264-4621 fax  
 E-mail: info@rbkansas.com