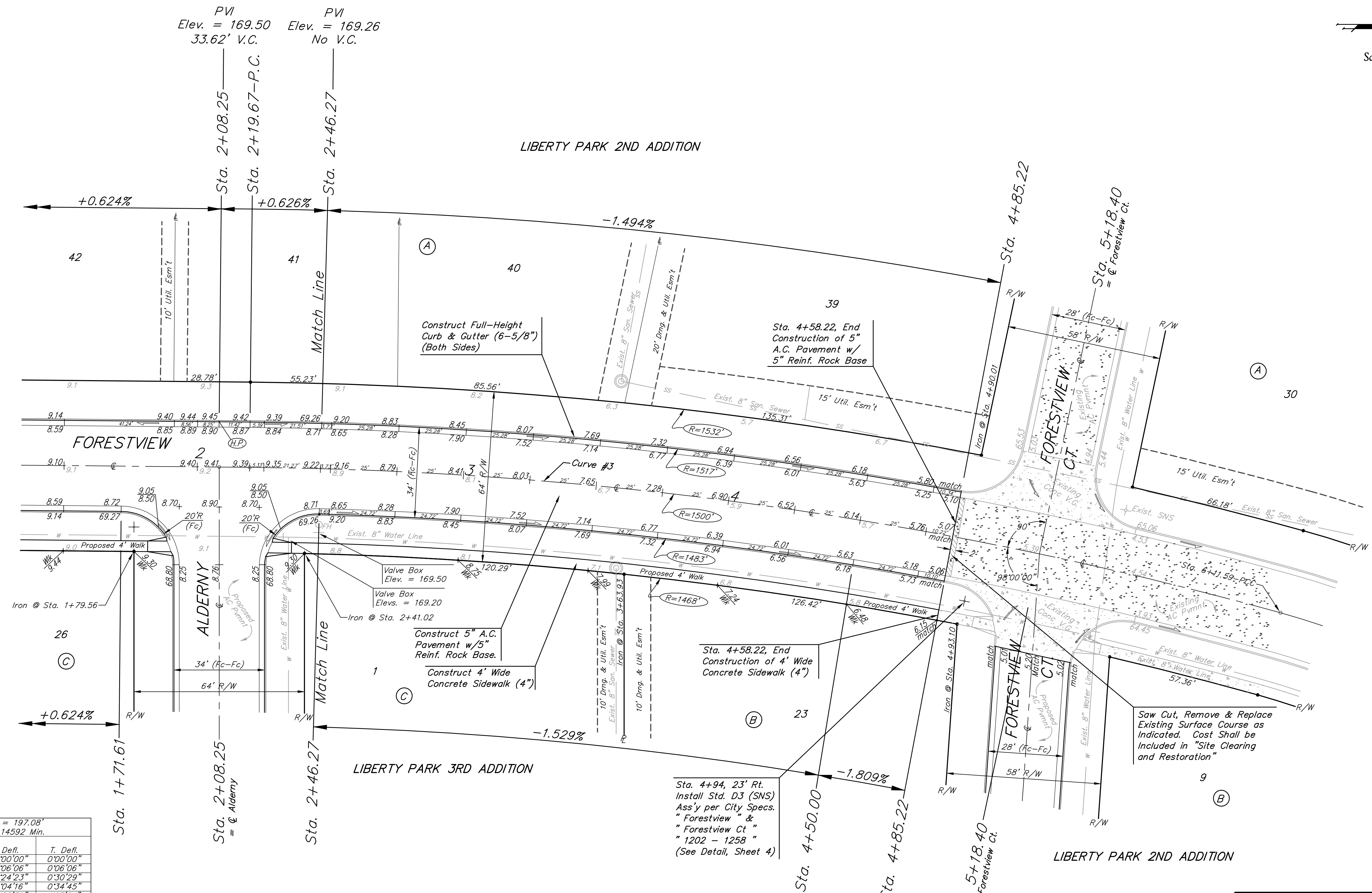


BENCHMARKS:
 BM #1: C.O.W. benchmark disk.
 56' E and 55' N of CL 135th
 St. W. & 13th St. N.
 Elev. = 167.83 (City Datum)

BM #2: RR spike in east face
 of power pole 1/4 mile S &
 31' E of intersection of 135th
 St. W. & 13th St. N.
 Elev. = 170.85 (City Datum)

BM #3: "□" cut in top of curb
 N end of W curb return of
 Forest View & Forest View Ct.
 Elev. = 165.07 (City Datum)

Scale: 1" = 20'
 • = Iron



Curve #3
 Curve Data Based on Centerline

Rad. = 1500' Delta = 14° 58' 13" Tangent = 197.08'
 Arc = 391.92' L.C. = 390.81' Def/Ft. = 1.14592 Min.

Station	Arc	8 Lt.	8 Rt.	Defl.	T. Defl.
2+19.67	-	-	-	0°00'00"	0°00'00"
2+25.00	5.33'	5.42'	5.24'	0°06'06"	0°06'06"
2+46.27	21.27'	21.62'	20.92'	0°24'23"	0°30'29"
2+50.00	3.73'	3.79'	3.67'	0°04'16"	0°34'45"
2+75.00	25.00'	25.42'	24.58'	0°28'39"	1°03'24"
3+00.00	25.00'	25.42'	24.58'	0°28'39"	1°32'03"
3+25.00	25.00'	25.42'	24.58'	0°28'39"	2°00'42"
3+50.00	25.00'	25.42'	24.58'	0°28'39"	2°29'21"
3+75.00	25.00'	25.42'	24.58'	0°28'39"	2°58'00"
4+00.00	25.00'	25.42'	24.58'	0°28'39"	3°26'39"
4+25.00	25.00'	25.42'	24.58'	0°28'39"	3°55'18"
4+50.00	25.00'	25.42'	24.58'	0°28'39"	4°23'56"
4+75.00	25.00'	25.42'	24.58'	0°28'39"	4°52'35"
4+85.22	10.22'	10.39'	10.05'	0°11'43"	5°04'18"
5+00.00	14.78'	15.03'	14.53'	0°16'56"	5°21'14"
5+25.00	25.00'	25.42'	24.58'	0°28'39"	5°49'53"
5+50.00	25.00'	25.42'	24.58'	0°28'39"	6°18'32"
5+75.00	25.00'	25.42'	24.58'	0°28'39"	6°47'11"
6+00.00	25.00'	25.42'	24.58'	0°28'39"	7°15'50"
115+9.01	11.59'	11.78'	11.40'	0°13'17"	7°29'07"

Baughman Liberty Park 2nd & 3rd Addition - Phase I
FORESTVIEW
 STA. 2+46.27-STA. 4+85.22

Baughman Company, P.A. 315 Ellis St. Wichita, KS 67211 P 316-262-7271 F 316-262-0149
 ENGINEERING | SURVEYING | PLANNING | LANDSCAPE ARCHITECTURE

PROJECT NUMBER: 472-83881 DESIGN: NBW/JAK DRAWN: JAK
 APPROVED: NBW DATE: 4/19/06
 REVISIONS: SCALE: Noted
 SHEET: 11 OF 53

E:Eng/Liberty Park 3rd/Phase I/Std 03-09/E701