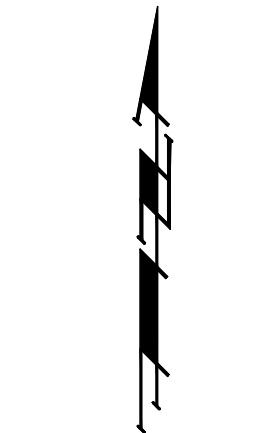


BENCHMARKS:
 BM #1: C.O.W. benchmark disk.
 56' E and 55' N of CL 135th
 St. W. & 13th St. N.
 Elev. = 167.83 (City Datum)

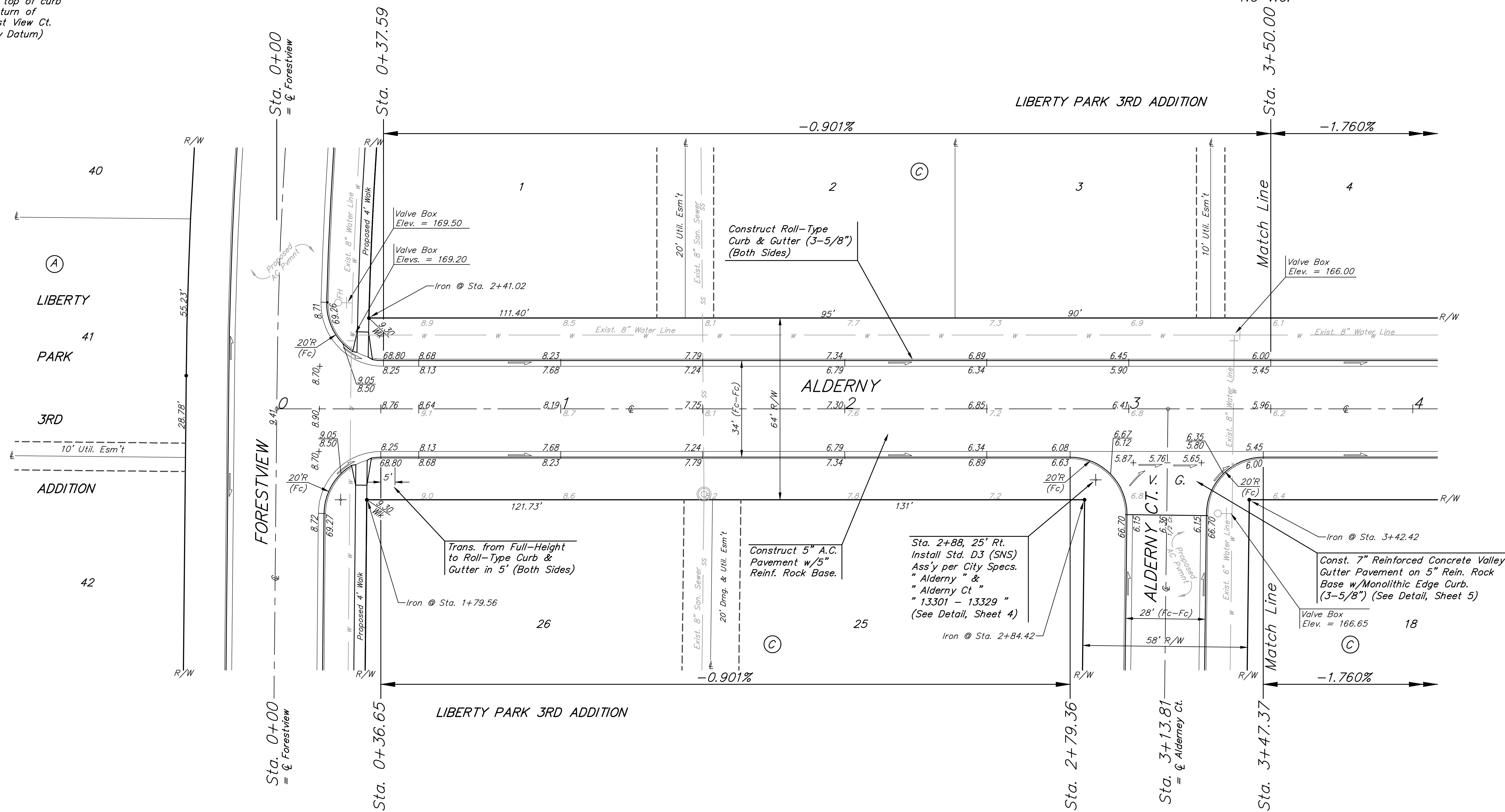
BM #2: RR spike in east face
 of power pole 1/4 mile S &
 31' E of intersection of 135th
 St. W. & 13th St. N.
 Elev. = 170.85 (City Datum)

BM #3: "□" cut in top of curb
 N end of W curb return of
 Forest View & Forest View Ct.
 Elev. = 165.07 (City Datum)

PVI
 Elev. = 166.00
 NO V.C.



Scale: 1" = 20'
 • = Iron



Roll type curb & gutter to be constructed on the pavement on this sheet.
 Top of curb elevation are given for full height curb.

		Liberty Park 2nd & 3rd Addition - Phase I	
		ALDERNY STA. 0+00 STA. 3+47.37	
<small>Baughman Company, P.A. 315 Ellis St. Wichita, KS 67211 P 3162627271 F 3162620149 ENGINEERING SURVEYING PLANNING LANDSCAPE ARCHITECTURE</small>			
PROJECT NUMBER 472-83881	DESIGN NBW/JAK	DRAWN JAK	
APPROVED	DATE 4/19/06		
REVISIONS:	SCALE Noted		
	SHEET	12 OF 53	