

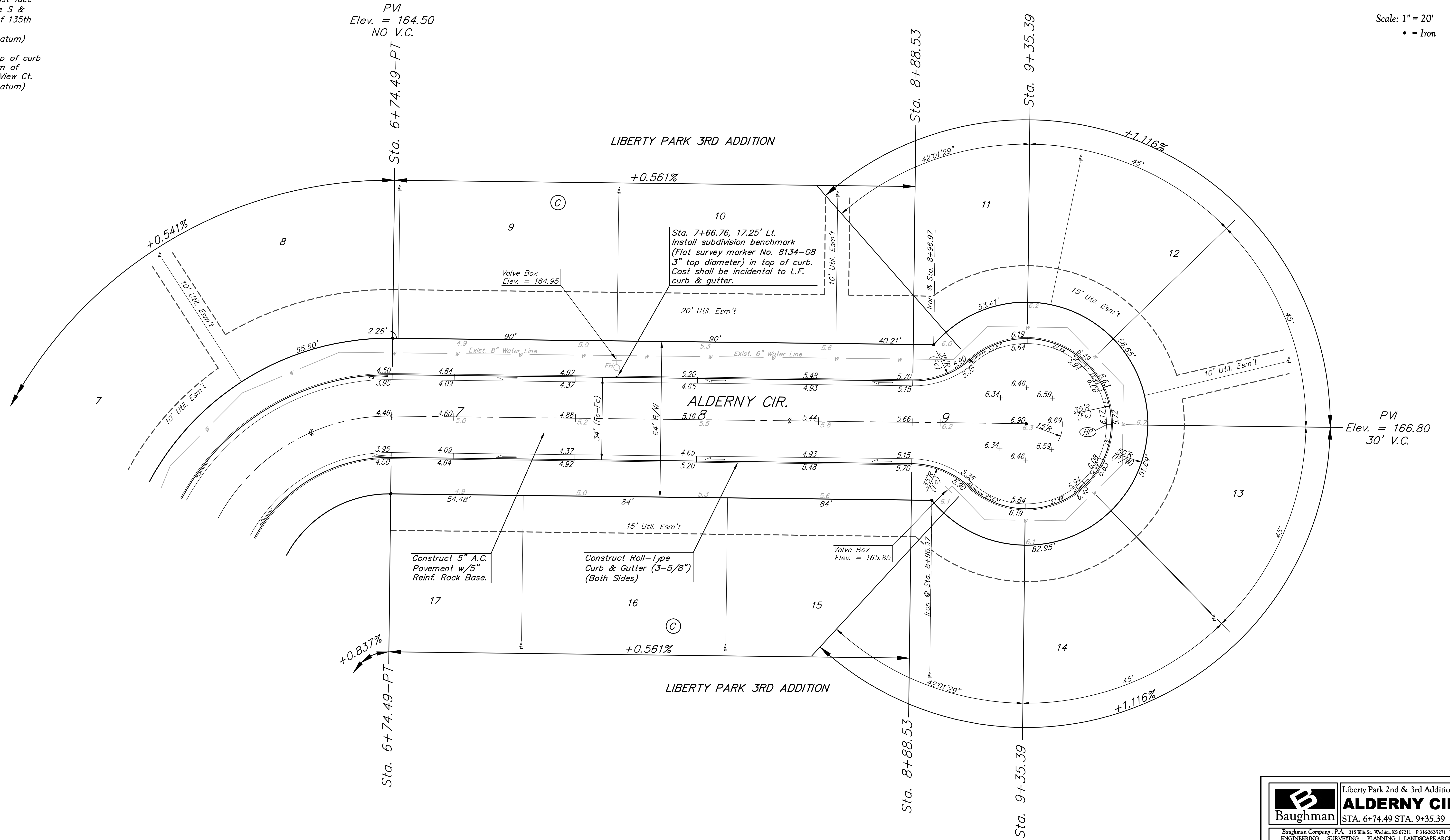
BENCHMARKS:
 BM #1: C.O.W. benchmark disk.
 56' E and 55' N of CL 135th
 St. W. & 13th St. N.
 Elev. = 167.83 (City Datum)

BM #2: RR spike in east face
 of power pole 1/4 mile S &
 31' E of intersection of 135th
 St. W. & 13th St. N.
 Elev. = 170.85 (City Datum)

BM #3: "□" cut in top of curb
 N end of W curb return of
 Forest View & Forest View Ct.
 Elev. = 165.07 (City Datum)



Scale: 1" = 20'
 • = Iron



	Liberty Park 2nd & 3rd Addition - Phase I	
	ALDERNY CIR	
STA. 6+74.49 STA. 9+35.39		
Baughman Company, P.A. 315 Ellis St. Wichita, KS 67211 P 316-262-7271 F 316-262-0149		
ENGINEERING SURVEYING PLANNING LANDSCAPE ARCHITECTURE		
PROJECT NUMBER 472-83881	DESIGN NBW/JAK	DRAWN JAK
APPROVED NBW	DATE 4/19/06	
REVISIONS:	SCALE Noted	SHEET 14 OF 53
E:\Eng\Liberty Park 3rd\Phase I\Str8		