

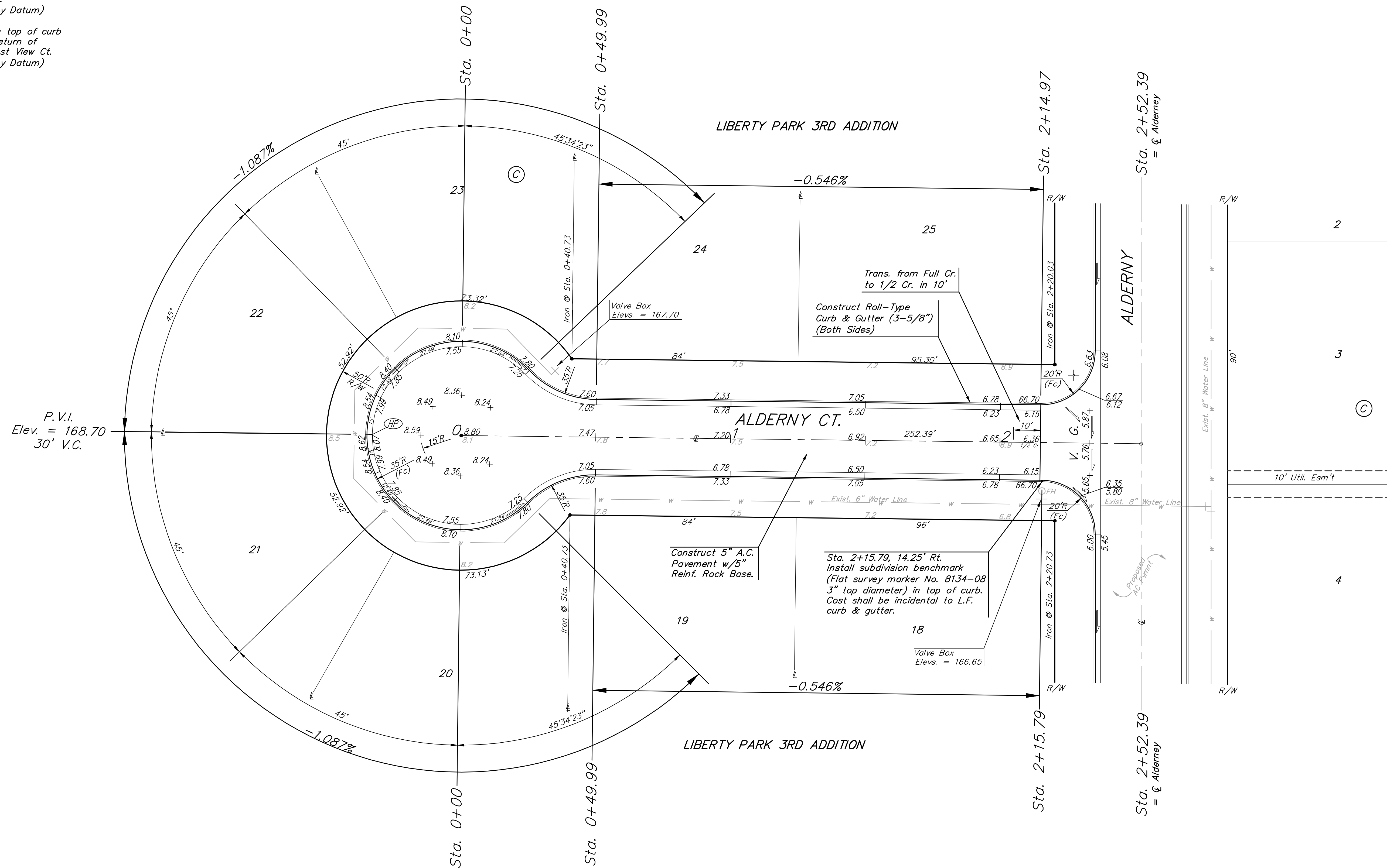
BENCHMARKS:
 BM #1: C.O.W. benchmark disk.
 56' E and 55' N of CL 135th
 St. W. & 13th St. N.
 Elev. = 167.83 (City Datum)

BM #2: RR spike in east face
 of power pole 1/4 mile S &
 31' E of intersection of 135th
 St. W. & 13th St. N.
 Elev. = 170.85 (City Datum)

BM #3: "□" cut in top of curb
 N end of W curb return of
 Forest View & Forest View Ct.
 Elev. = 165.07 (City Datum)



Scale: 1" = 20'
 • = Iron



Roll type curb & gutter to be constructed on the pavement on this sheet. Top of curb elevation are given for full height curb.

		Liberty Park 2nd & 3rd Addition - Phase I ALDERNEY CT LOTS 18-25, BLOCK C	
<small>Baughman Company, P.A. 315 Ellis St. William, NJ 07211 P 316262-7271 F 316262-0149 ENGINEERING SURVEYING PLANNING LANDSCAPE ARCHITECTURE</small>			
PROJECT NUMBER 472-83881	DESIGN NBW/JAK	DRAWN JAK	
REVISIONS:	APPROVED NBW	DATE 4/19/06	
SCALE Noted		SHEET 15 OF 53	
<small>E:\Eng\Liberty Park 3rd\Phase I\969</small>		<small>03-09-E701</small>	