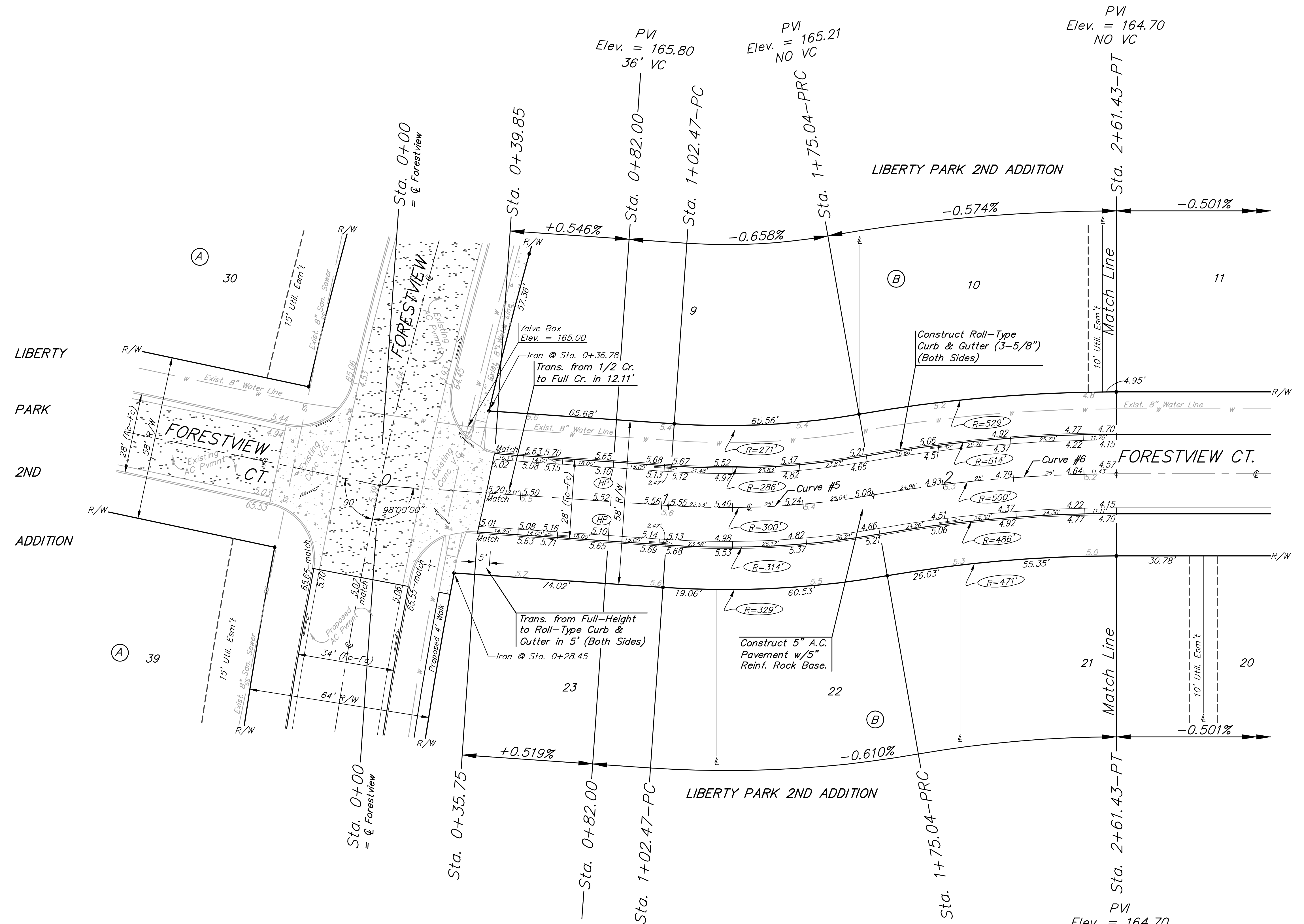
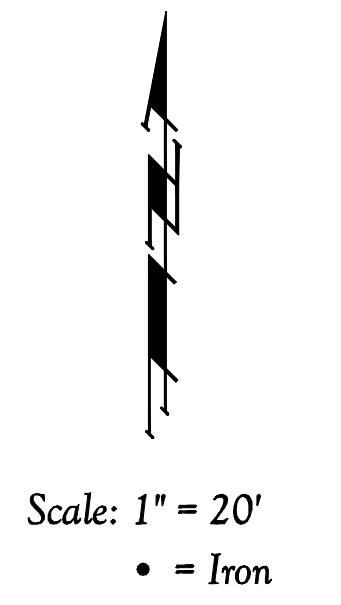


BENCHMARKS:
 BM #1: C.O.W. benchmark disk.
 56' E and 55' N of CL 135th
 St. W. & 13th St. N.
 Elev. = 167.83 (City Datum)

BM #2: RR spike in east face
 of power pole 1/4 mile S &
 31' E of intersection of 135th
 St. W. & 13th St. N.
 Elev. = 170.85 (City Datum)

BM #3: "□" cut in top of curb
 N end of W curb return of
 Forest View & Forest View Ct.
 Elev. = 167.07 (City Datum)



PVI
 Elev. = 165.80
 36' VC

PVI
 Elev. = 165.21
 NO VC

PVI
 Elev. = 164.70
 NO VC

PVI
 Elev. = 164.70
 NO VC


Curve #5
 Curve Data Based on Centerline
 Rad. = 300' Delta = 13° 51' 36" Tangent = 36.46'
 Arc = 72.57' L.C. = 72.39' Def./Ft. = 5.72964 Min.

Station	Arc	8' Lt.	8' Rt.	Defl.	T. Defl.
1+02.47	-	-	-	0°00'00"	0°00'00"
1+25.00	22.53'	20.87'	24.18'	2°09'05"	2°09'05"
1+50.00	25.00'	23.16'	26.83'	2°23'15"	4°32'20"
1+75.04	25.04'	23.20'	26.87'	2°23'28"	6°55'48"

Curve #6
 Curve Data Based on Centerline
 Rad. = 500' Delta = 9° 53' 59" Tangent = 43.30'
 Arc = 86.39' L.C. = 86.28' Def./Ft. = 3.43780 Min.

Station	Arc	FACE CHORD LENGTHS		Defl.	T. Defl.
		8' Lt.	8' Rt.		
1+75.04	-	-	-	0°00'00"	0°00'00"
2+00.00	24.96'	26.06'	23.86'	1°25'48"	1°25'48"
2+25.00	25.00'	26.10'	23.90'	1°25'57"	2°51'45"
2+50.00	25.00'	26.10'	23.90'	1°25'57"	4°17'42"
2+61.43	11.43'	11.93'	10.93'	0°39'18"	4°57'00"

Roll type curb & gutter to
 be constructed on the pavement
 on this sheet.
 Top of curb elevation are given
 for full height curb.



Baughman

Liberty Park 2nd & 3rd Addition - Phase I
FORESTVIEW CT.
 STA. 0+00 STA. 2+61.43

Baughman Company, P.A. 315 Ellis St. Wichita, KS 67211 P 316262-7271 F 316262-0149
 ENGINEERING | SURVEYING | PLANNING | LANDSCAPE ARCHITECTURE

PROJECT NUMBER 472-83881	DESIGN NBW/JAK	DRAWN JAK
REVISIONS:	APPROVED NBW	DATE 4/19/06
SCALE Noted		
16		53