

BENCHMARKS:
 BM #1: C.O.W. benchmark disk.
 56' E and 55' N of CL 135th
 St. W. & 13th St. N.
 Elev. = 167.83 (City Datum)

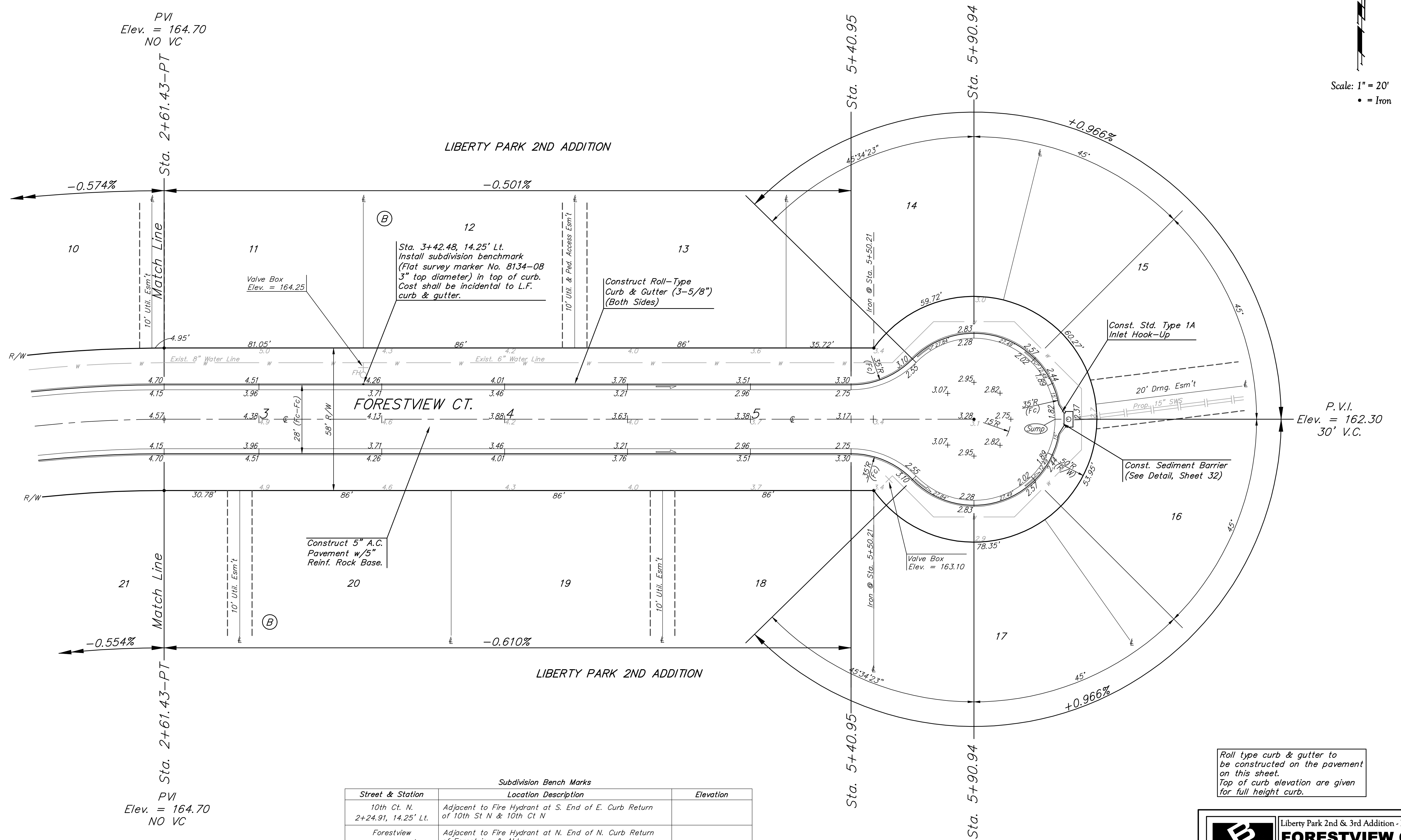
BM #2: RR spike in east face
 of power pole 1/4 mile S &
 31' E of intersection of 135th
 St. W. & 13th St. N.
 Elev. = 170.85 (City Datum)

BM #3: "□" cut in top of curb
 N end of W curb return of
 Forest View & Forest View Ct.
 Elev. = 165.07 (City Datum)

PVI
 Elev. = 164.70
 NO VC

PVI
 Elev. = 164.70
 NO VC

Scale: 1" = 20'
 • = Iron



Subdivision Bench Marks		
Street & Station	Location Description	Elevation
10th Ct. N. 2+24.91, 14.25' Lt.	Adjacent to Fire Hydrant at S. End of E. Curb Return of 10th St N & 10th Ct N	
Forestview 2+46.27, 17.25' Rt.	Adjacent to Fire Hydrant at N. End of N. Curb Return of Forestview & Alderny	
Alderny Cir 7+66.76, 17.25' Lt.	Adjacent to Fire Hydrant near common lot corner of Lots 9-10, Block C.	
Alderny Ct 2+15.79, 14.25' Rt.	Adjacent to Fire Hydrant at S. End of E. Curb Return of Alderny & Alderny Ct.	
Forestview Ct 3+42.48, 14.25' Lt.	Adjacent to Fire Hydrant near common lot corner of Lots 1-12 Block B.	

Roll type curb & gutter to be constructed on the pavement on this sheet.
 Top of curb elevation are given for full height curb.

	Liberty Park 2nd & 3rd Addition - Phase I	
	FORESTVIEW CT.	
Sta. 2+61.43 STA. 5+90.94		
Baughman Company, P.A. 315 Ellis St. Wichita, KS 67211 P 316-262-7271 F 316-262-0149		
ENGINEERING SURVEYING PLANNING LANDSCAPE ARCHITECTURE		
PROJECT NUMBER 472-83881	DESIGN NBW/JAK	DRAWN JAK
APPROVED	NBW	DATE 4/19/06
REVISIONS:	SCALE Noted	SHEET
		17 OF 53