

STORM WATER SEWER #623

TO SERVE LOT 9, BLK A, SANTA FE ORIENT INDUSTRIAL DISTRICT 3RD ADD.
PROJECT NUMBER 468-84281 OCA# 751433

GENERAL NOTES

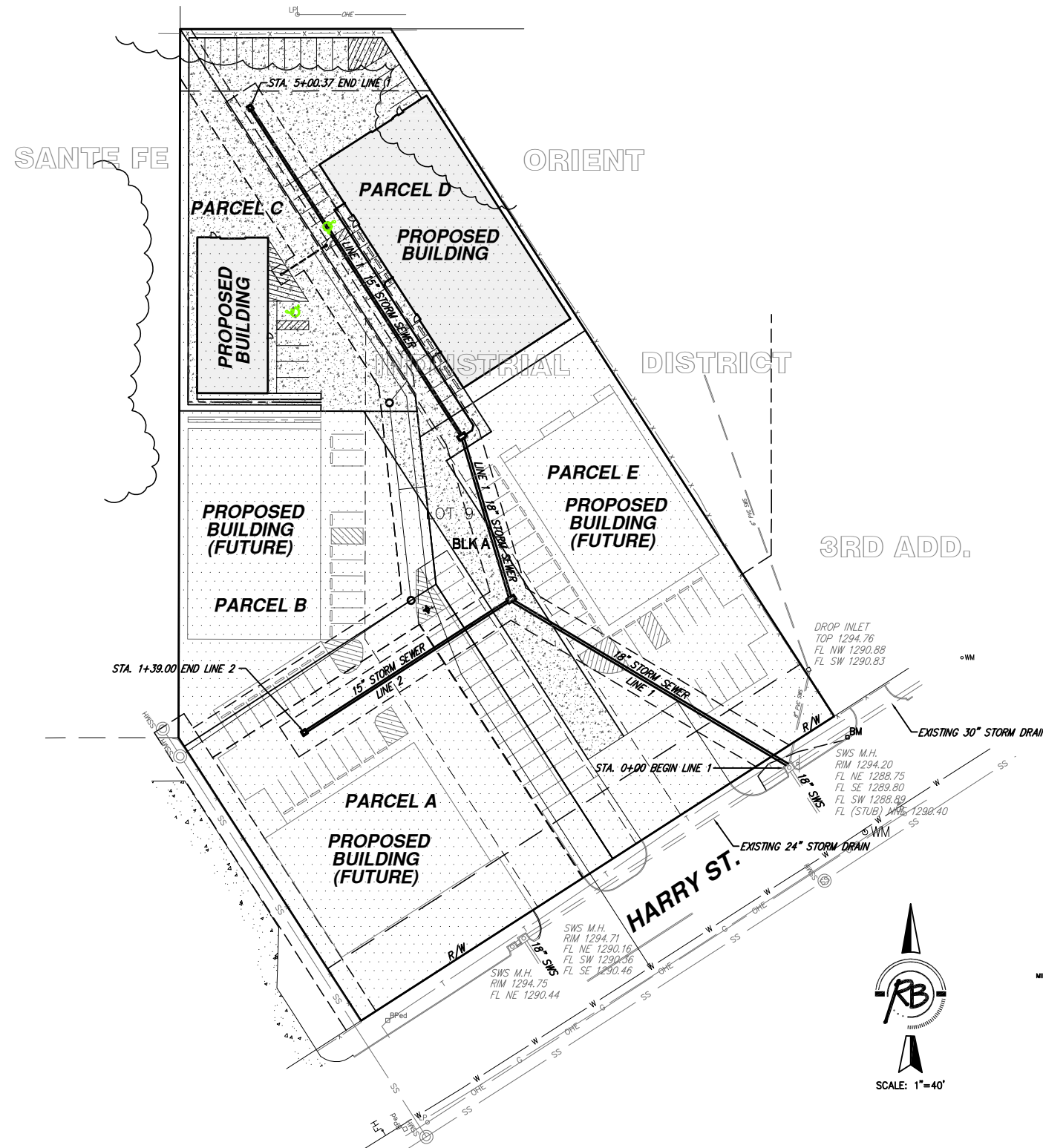
- Contractor will be required to provide a minimum advance notice of forty-eight (48) hours to utility companies prior to starting any excavation as follows:

Kansas One-Call 687-2470

The Contractor must notify the following in case of an emergency:

Cox Communications	262-0661
Kansas Gas Service	383-8600
Westar	383-8600
Aquila Energy	1-800-303-0357
Southwestern Bell Telephone Company	1-800-286-8313
City of Wichita Water Department	262-6000
City of Wichita Sewer Maintenance	262-6000

- Existing utilities and their location, as shown on the plans, represent the best information obtainable for design. Location information has been obtained from the various utility companies and is either from company record drawings or company-provided field locations. The Contractor will be required to work around existing utilities within the right-of-way which do not conflict with proposed construction.
- No work shall begin on this project before required bonds are submitted to the City of Wichita, and the project inspector has been notified.
- All areas of public R/W disturbed by construction of this project are to be restored in accordance with Administrative Regulation AR 78 of the City of Wichita.
- Trench backfill to be compacted to minimum of 98% std. density (ASTM D-698) to existing grade.
- Traffic will not be affected by construction of this project.



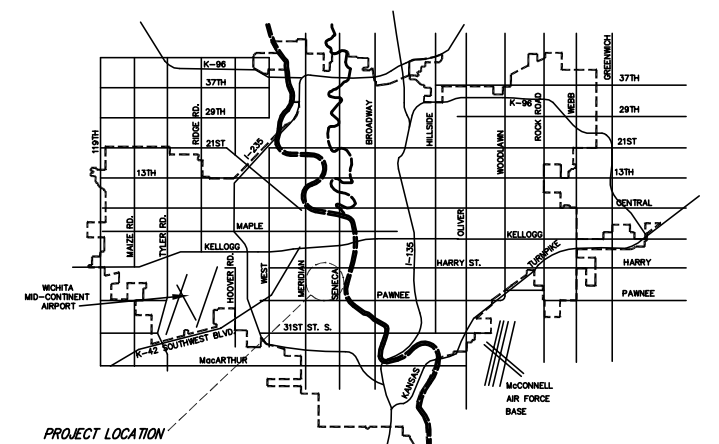
IMPROVEMENT DISTRICT 

INDEX OF SHEETS

- INDEX SHEET
- OVERALL SITE GRADING PLAN
- PHASE 1 SITE GRADING
- LINE 1 PLAN & PROFILE
- LINE 2 PLAN & PROFILE
- INLET DETAILS
- EROSION CONTROL DETAILS
- LOT SPLIT COPY
- PLAT COPY

BENCHMARKS

□ TOP CURB SOUTHEAST LOT 9 BLOCK A, SANTA FE ORIENT IND. DIST. 3RD. ELEV. = 1294.08



CITY OF WICHITA, KANSAS
JAMES L. ARMOUR, P.E., CITY ENGINEER



Ruggles & Bohm, P.A.
Engineering, Surveying, Land Planning
924 North Main
Wichita, Kansas 67203
www.rbkansas.com
(316) 264-8008
(316) 264-4621 fax
E-mail: info@rbkansas.com