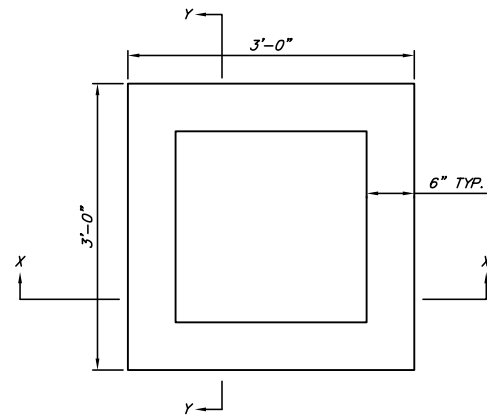


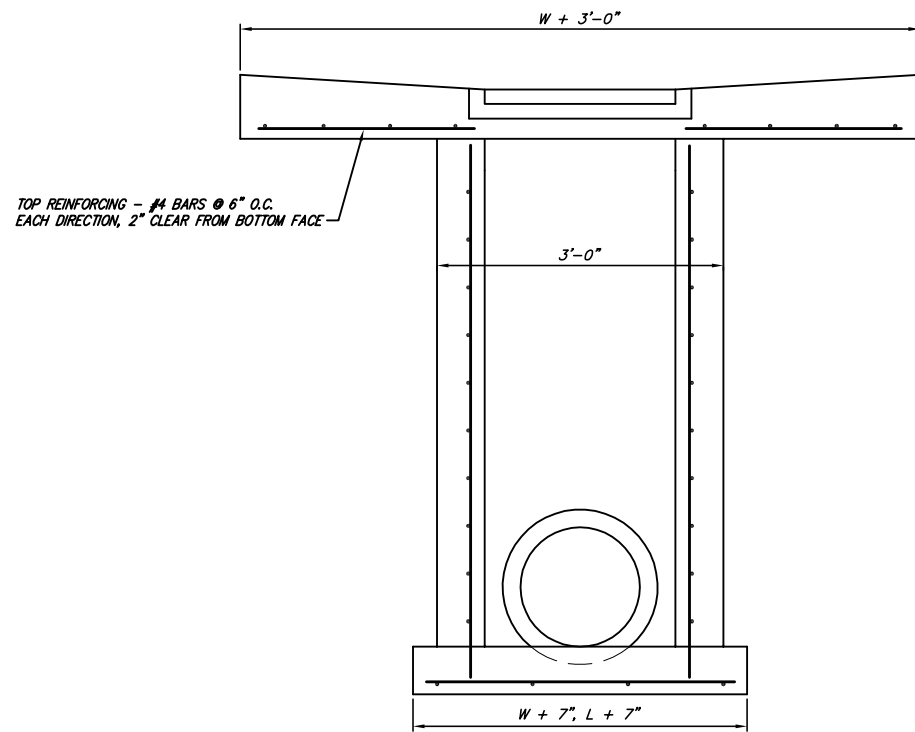
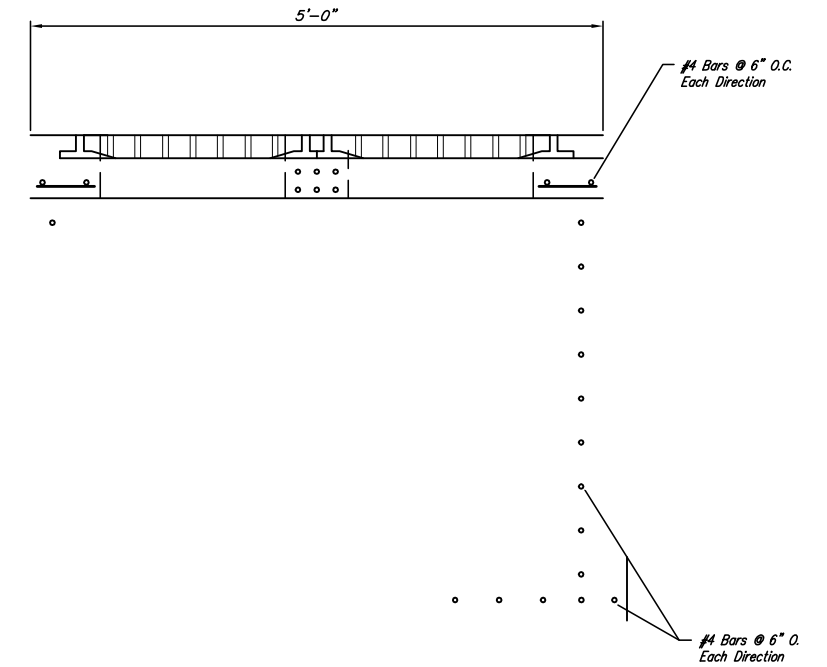
SECTION X-X

NOTES:

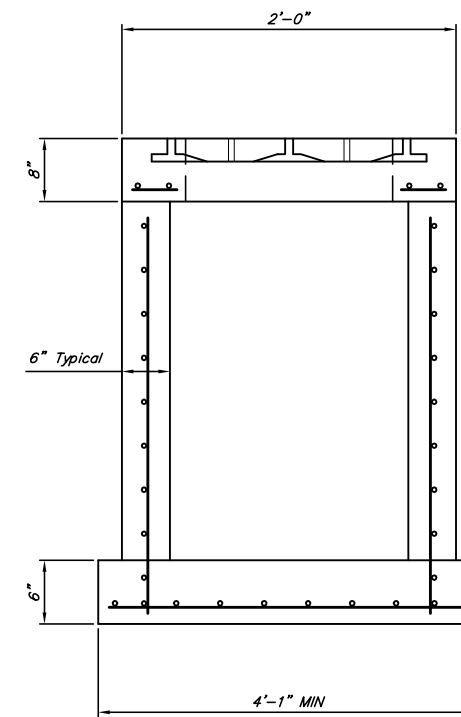
FRAME AND GRATE TO BE GCI CASTINGS, INC. GR 2361, DEETER FOUNDRY 2433, OR EQUIVALENT.



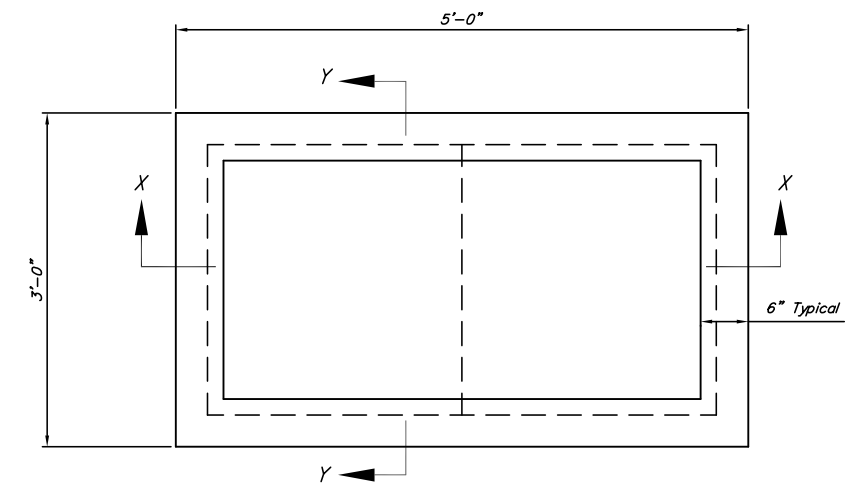
2'x2' INLET



SECTION Y-Y



SECTION Y-Y



PLAN

NOTE:

1. FRAME AND GRATE TO BE 2 EA. GCI CASTINGS, INC. GR 3027, 2 EA. DEETER FOUNDRY 2512, OR EQUIVALENT
2. CONCRETE USED IN INLET CONSTRUCTION TO BE CLASS A OR CLASS A (AE).
3. FLOOR OF INLET TO BE SHAPED TO DRAIN, USING UNREINFORCED CLASS A CONCRETE.
4. INLET MAY BE PRE-CAST WITH ENGINEER'S APPROVAL.

INLET DETAILS
 LOT 9, SANTE FE ORIENT INDUSTRIAL 3RD
 WICHITA, KANSAS

