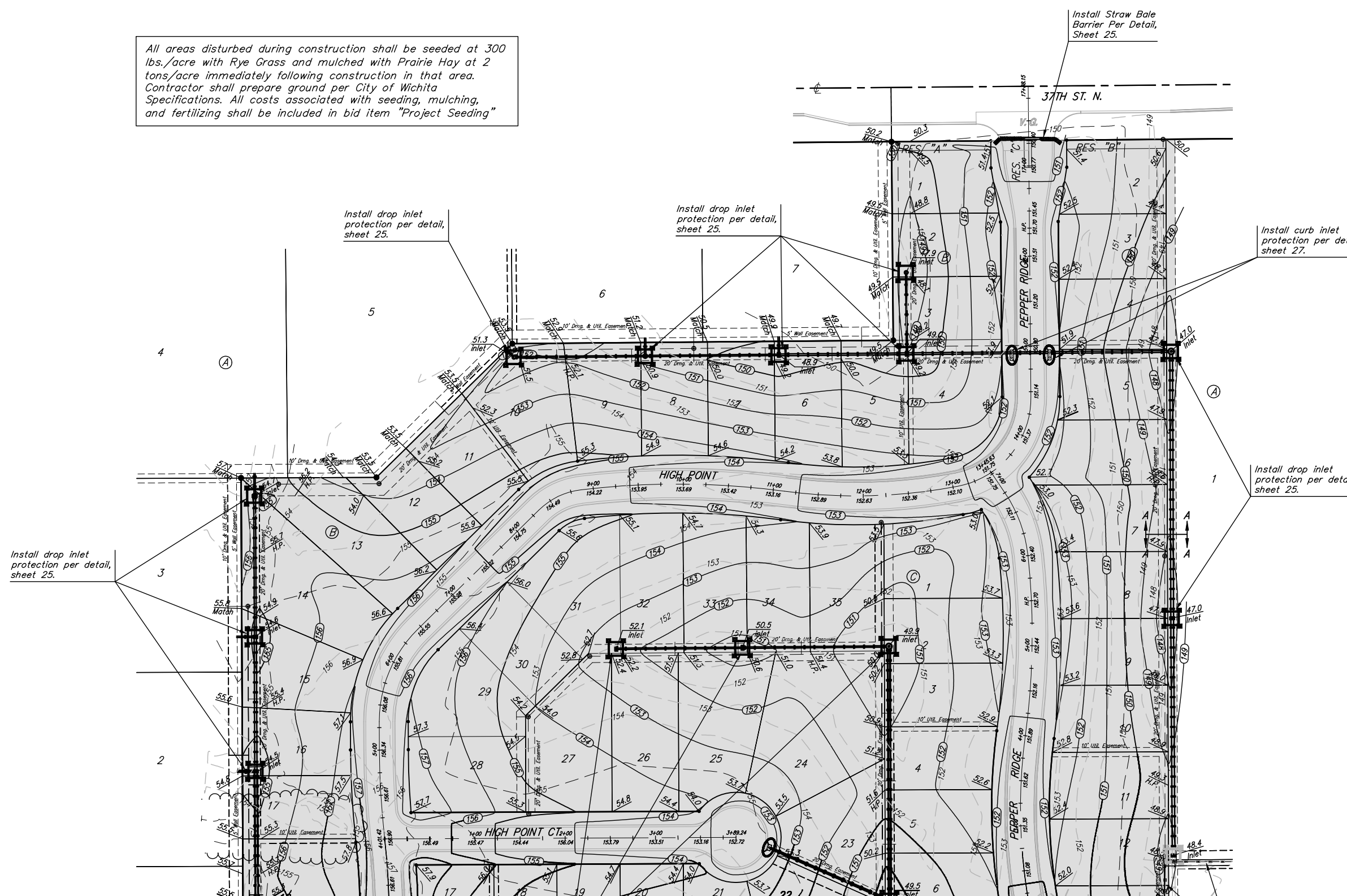
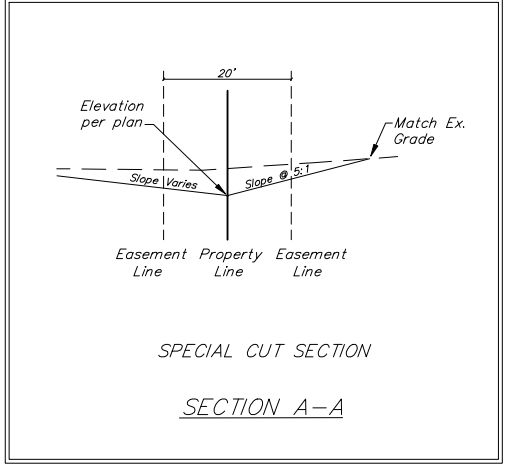


All areas disturbed during construction shall be seeded at 300 lbs./acre with Rye Grass and mulched with Prairie Hay at 2 tons/acre immediately following construction in that area. Contractor shall prepare ground per City of Wichita Specifications. All costs associated with seeding, mulching, and fertilizing shall be included in bid item "Project Seeding"

Scale: 1" = 60'



Mass Grading and Erosion Control Plan Legend

- Proposed Storm Sewer
- Existing Sanitary Sewer
- Proposed Grade
- Existing Grade
- Silt Fence
- Erosion Control Berm
- Straw Bale Ditch Check
- Drop Inlet Sed. Barrier
- Curb Inlet Sed. Barrier
- Remove Trees
- Area to be graded

EROSION CONTROL MEASURE	UNITS	QUANTITY
INSTALL DROP INLET BARRIER	EA.	13
INSTALL CURB INLET BARRIER	EA.	2
INSTALL STRAW BALE BARRIER	EA.	1

QUANTITIES ARE FOR INFORMATION ONLY!  
CONTRACTOR SHALL VERIFY QUANTITIES PER FINAL BID QUANTITY SHEET.

**Caution!**  
Existing U/G Utilities:  
Elec, CATV, and AT&T

**Baughman** Tyler's Landing 3rd Addition - Phase 2  
**MASS GRADING PLAN**  
STORM WATER DRAIN #278

Baughman Company, P.A. 315 8th St. Wichita, KS 67211 P 316-262-7271 F 316-262-0149  
ENGINEERING | SURVEYING | PLANNING | LANDSCAPE ARCHITECTURE

PROJECT NUMBER: 468-64298  
DESIGN: RDM/ABO  
DRAWN: RDM  
APPROVED: ABO  
DATE: 02/07  
SCALE: NOTED  
SHEET: 2 OF 29

Tyler's Landing 3rd Phase 2\SW\Mass Grading.dwg