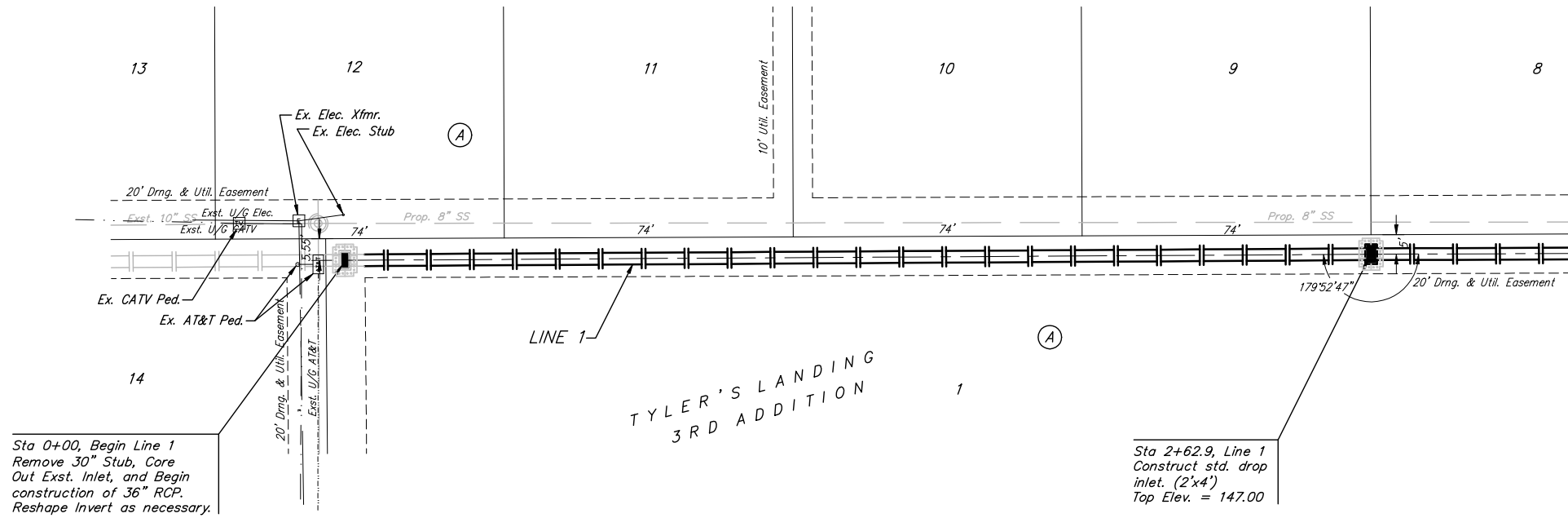


Benchmarks:
 BM #1: "□" Cut in Middle of Curb
 Inlet Top, North Curb of Conrey,
 Adjacent to SW Corner of Lot 14,
 Block A, Tyler's Landing 3rd Addition.
 Elev. = 150.29 (1337.69 M.S.L.)

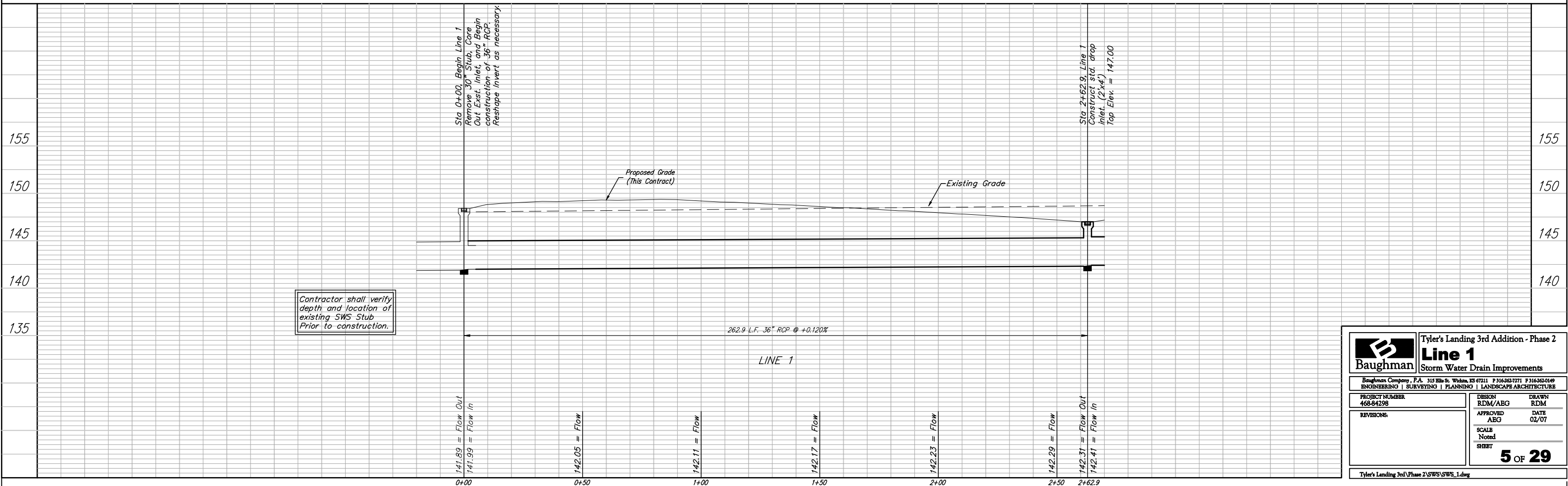
BM #2: "□" Cut in Top of East Curb
 of High Point, 10' South of End of
 Return. Adjacent to Lot 1, Block D,
 Tyler's Landing Addition.
 Elev. = 155.28 (1342.68 M.S.L.)

Scale: 1" = 20' Horizontal
 1" = 5' Vertical
 • = Iron



Sta 0+00, Begin Line 1
 Remove 30" Stub, Core
 Out Exst. Inlet, and Begin
 construction of 36" RCP.
 Reshape Invert as necessary.

Sta 2+62.9, Line 1
 Construct std. drop
 inlet. (2'x4')
 Top Elev. = 147.00



Contractor shall verify
 depth and location of
 existing SWS Stub
 Prior to construction.

Baughman		Tyler's Landing 3rd Addition - Phase 2	
		Line 1	
		Storm Water Drain Improvements	
Baughman Company, P.A. 315 Ellis St. Wichita, KS 67211 P 316-262-7771 F 316-262-0149 ENGINEERING SURVEYING PLANNING LANDSCAPE ARCHITECTURE			
PROJECT NUMBER 468-84298	DESIGN RDM/ABG	DRAWN RDM	DATE 02/07
REVISIONS	APPROVED ABG	SCALE Noted	SHEET
			5 OF 29
Tyler's Landing 3rd Phase 2/SWS/SWS_1.dwg			