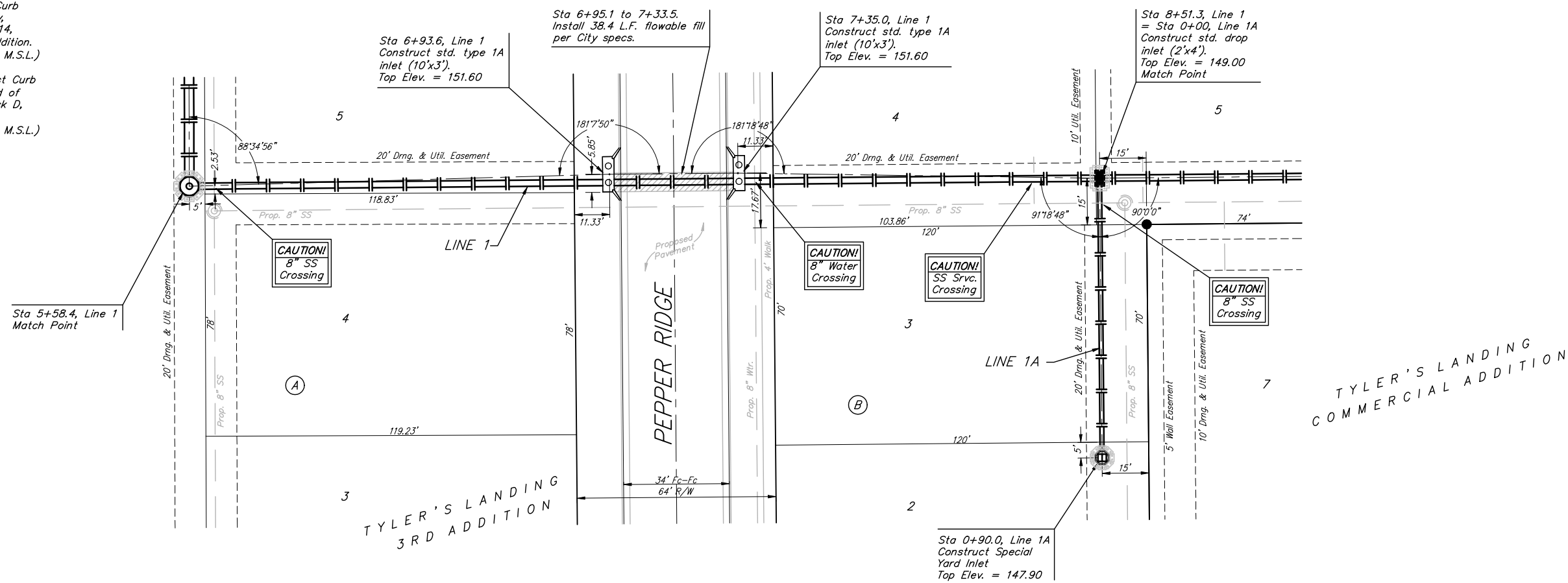
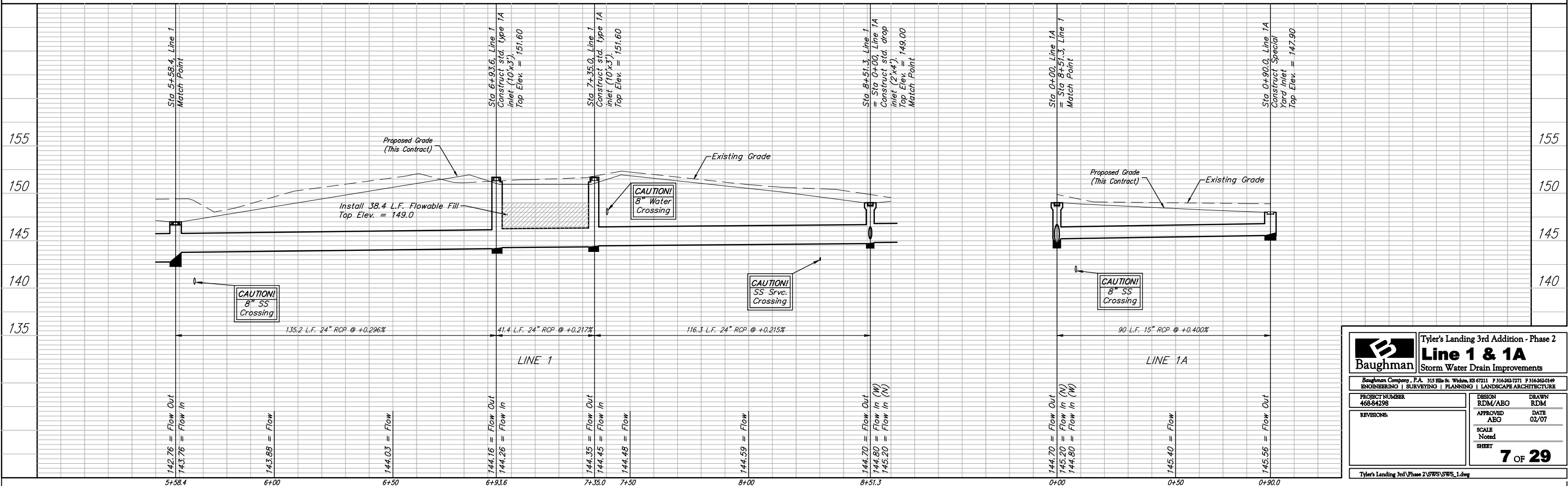


Benchmarks:
 BM #1: "□" Cut in Middle of Curb
 Inlet Top, North Curb of Conrey,
 Adjacent to SW Corner of Lot 14,
 Block A, Tyler's Landing 3rd Addition.
 Elev. = 150.29 (1337.69 M.S.L.)
 BM #2: "□" Cut in Top of East Curb
 of High Point, 10' South of End of
 Return. Adjacent to Lot 1, Block D,
 Tyler's Landing Addition.
 Elev. = 155.28 (1342.68 M.S.L.)



Scale: 1" = 20' Horizontal
 1" = 5' Vertical
 • = Iron



		Tyler's Landing 3rd Addition - Phase 2	
		Line 1 & 1A	
Storm Water Drain Improvements		<small>Baughman Company, P.A. 315 Ellis St. Wichita, KS 67211 P 316-262-7771 F 316-262-0149 ENGINEERING SURVEYING PLANNING LANDSCAPE ARCHITECTURE</small>	
PROJECT NUMBER 468-84298	DESIGN RDM/ABG	DRAWN RDM	
REVISIONS	APPROVED ABG	DATE 02/07	
	SCALE Noted	SHEET 7 OF 29	
Tyler's Landing 3rd Phase 2/SWS/SWS_1.dwg			