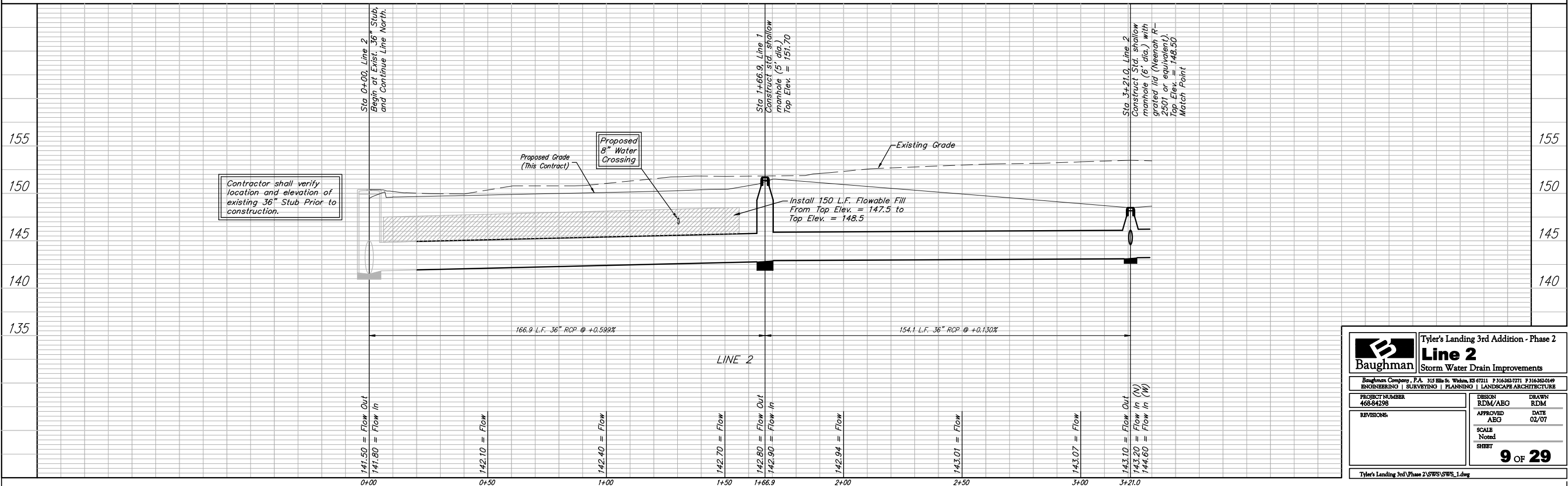
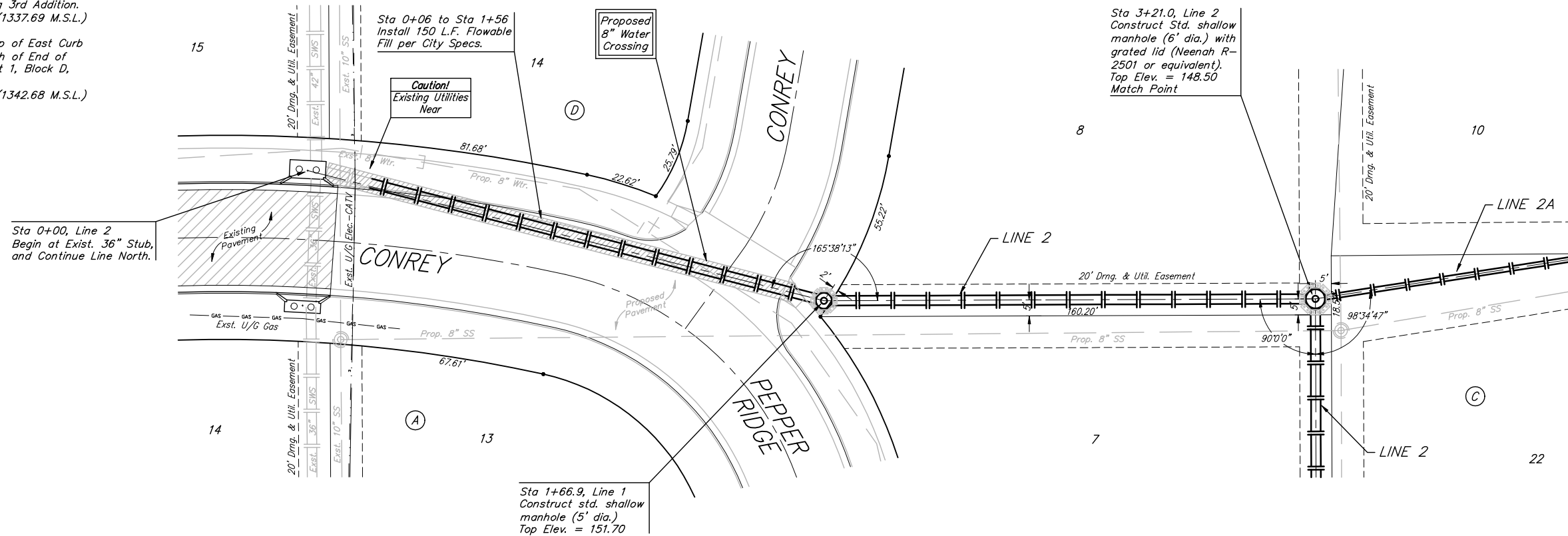


**Benchmarks:**  
 BM #1: "□" Cut in Middle of Curb  
 Inlet Top, North Curb of Conrey,  
 Adjacent to SW Corner of Lot 14,  
 Block A, Tyler's Landing 3rd Addition.  
 Elev. = 150.29 (1337.69 M.S.L.)

BM #2: "□" Cut in Top of East Curb  
 of High Point, 10' South of End of  
 Return. Adjacent to Lot 1, Block D,  
 Tyler's Landing Addition.  
 Elev. = 155.28 (1342.68 M.S.L.)

Scale: 1" = 20' Horizontal  
 1" = 5' Vertical  
 • = Iron



		<b>Tyler's Landing 3rd Addition - Phase 2</b> <b>Line 2</b> Storm Water Drain Improvements	
		<small>Baughman Company, P.A. 315 Ellis St. Wilkins, KS 67211 P 316-262-7771 F 316-262-0149          ENGINEERING   SURVEYING   PLANNING   LANDSCAPE ARCHITECTURE</small>	
PROJECT NUMBER 468-84298	DESIGN RDM/ABG	DRAWN RDM	DATE 02/07
REVISIONS	APPROVED ABG	SCALE Noted	SHEET <b>9 OF 29</b>
<small>Tyler's Landing 3rd Phase 2/SWS/SWS_1.dwg</small>			