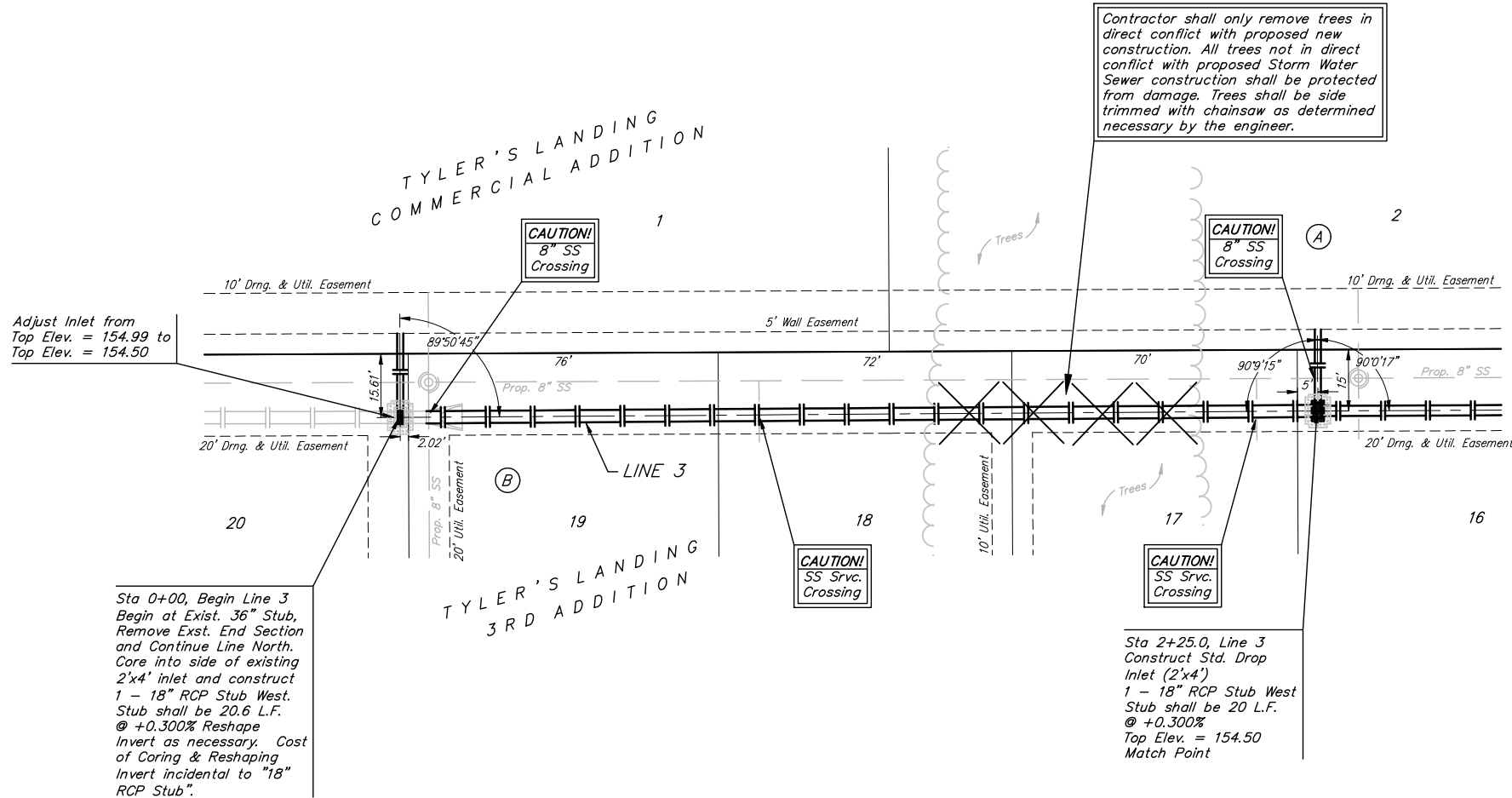


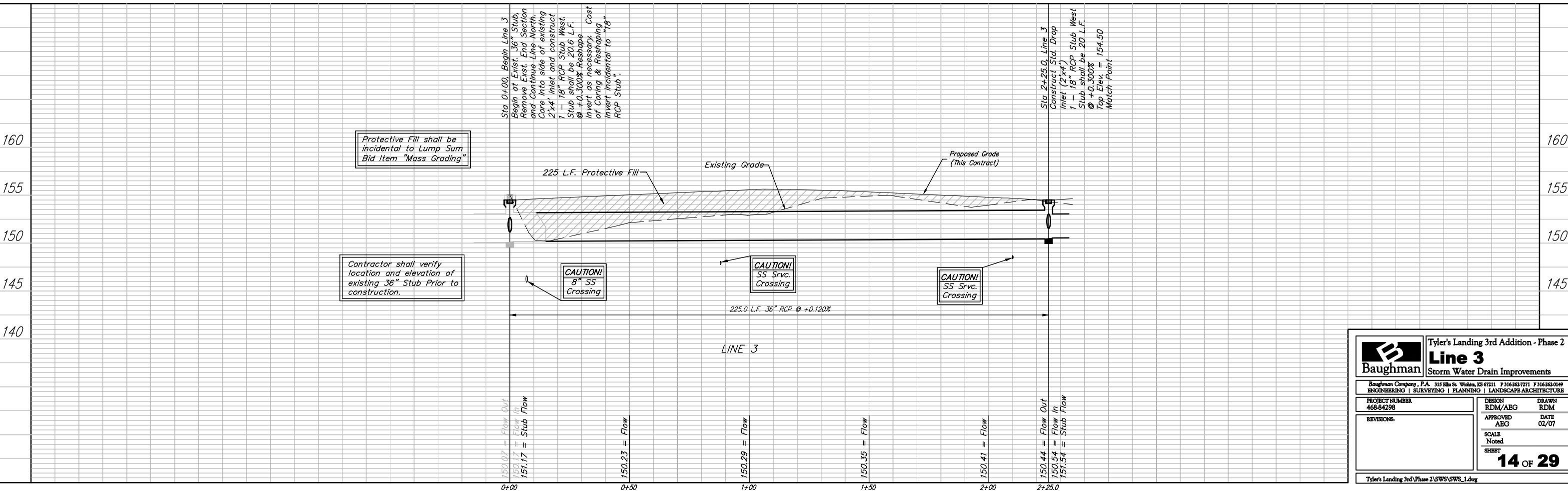
**Benchmarks:**  
 BM #1: "□" Cut in Middle of Curb  
 Inlet Top, North Curb of Conrey,  
 Adjacent to SW Corner of Lot 14,  
 Block A, Tyler's Landing 3rd Addition.  
 Elev. = 150.29 (1337.69 M.S.L.)

BM #2: "□" Cut in Top of East Curb  
 of High Point, 10' South of End of  
 Return. Adjacent to Lot 1, Block D,  
 Tyler's Landing Addition.  
 Elev. = 155.28 (1342.68 M.S.L.)



Contractor shall only remove trees in direct conflict with proposed new construction. All trees not in direct conflict with proposed Storm Water Sewer construction shall be protected from damage. Trees shall be side trimmed with chainsaw as determined necessary by the engineer.

Scale: 1" = 20' Horizontal  
 1" = 5' Vertical  
 • = Iron



Protective Fill shall be incidental to Lump Sum Bid Item "Mass Grading"

Contractor shall verify location and elevation of existing 36" Stub Prior to construction.

Sta 0+00, Begin Line 3  
 Begin at Exist. 36" Stub  
 Remove Exist. End Section  
 and Continue Line North.  
 Core into side of existing  
 2x4' inlet and construct  
 1 - 18" RCP Stub West.  
 Stub shall be 20.6 L.F.  
 @ +0.300% Reshape. Cost  
 of Coring & Reshaping.  
 Invert incidental to "18"  
 RCP Stub.

Sta 2+25.0, Line 3  
 Construct Std. Drop  
 Inlet (2x4')  
 1 - 18" RCP Stub West  
 Stub shall be 20 L.F.  
 @ +0.300%  
 Top Elev. = 154.50  
 Match Point

<b>Baughman</b>		Tyler's Landing 3rd Addition - Phase 2	
		<b>Line 3</b>	
		Storm Water Drain Improvements	
Baughman Company, P.A. 315 Ellis St. Wichita, KS 67211 P 316-262-7771 F 316-262-0149 ENGINEERING   SURVEYING   PLANNING   LANDSCAPE ARCHITECTURE			
PROJECT NUMBER 468-84298	DESIGN RDM/ABG	DRAWN RDM	DATE 02/07
REVISIONS	APPROVED ABG	SCALE Noted	SHEET
			<b>14 OF 29</b>
Tyler's Landing 3rd Phase 2\SW\SWR_1.dwg			