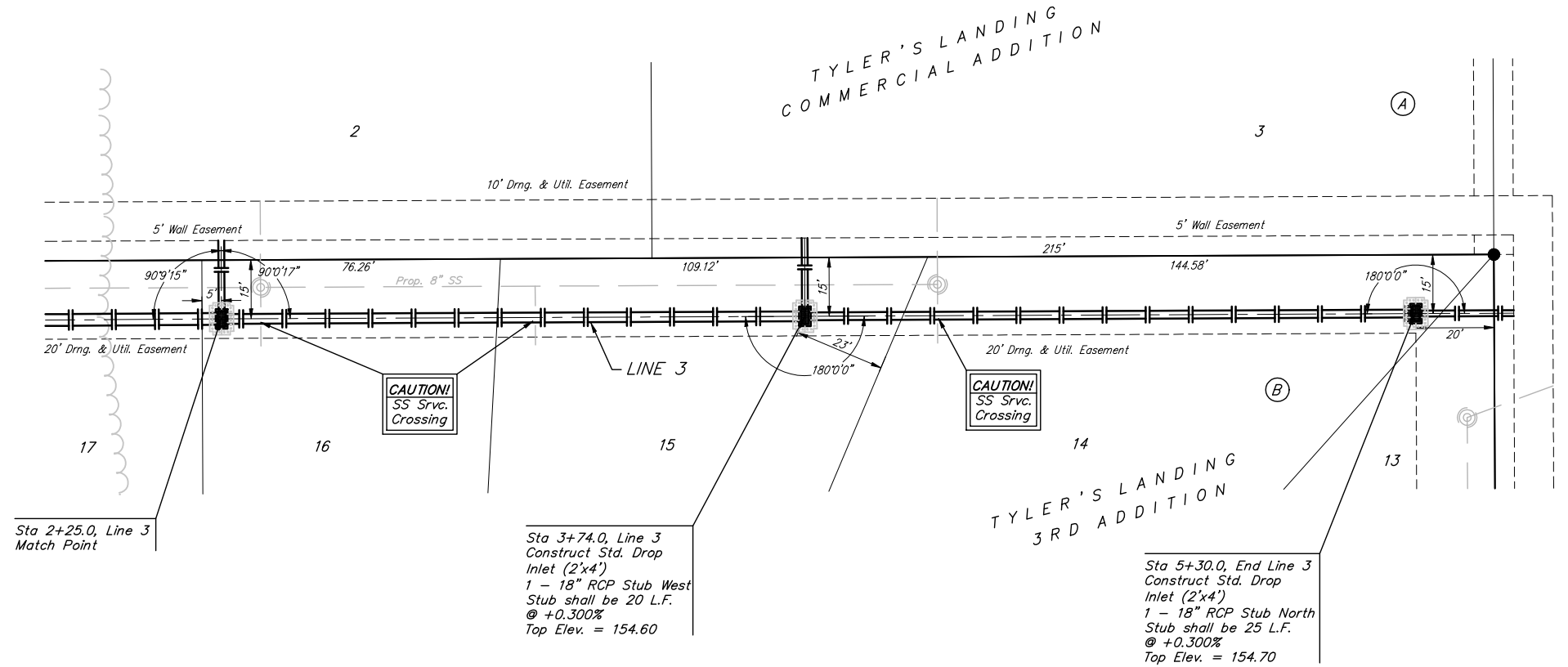


Benchmarks:
 BM #1: "□" Cut in Middle of Curb
 Inlet Top, North Curb of Conrey,
 Adjacent to SW Corner of Lot 14,
 Block A, Tyler's Landing 3rd Addition.
 Elev. = 150.29 (1337.69 M.S.L.)

BM #2: "□" Cut in Top of East Curb
 of High Point, 10' South of End of
 Return. Adjacent to Lot 1, Block D,
 Tyler's Landing Addition.
 Elev. = 155.28 (1342.68 M.S.L.)

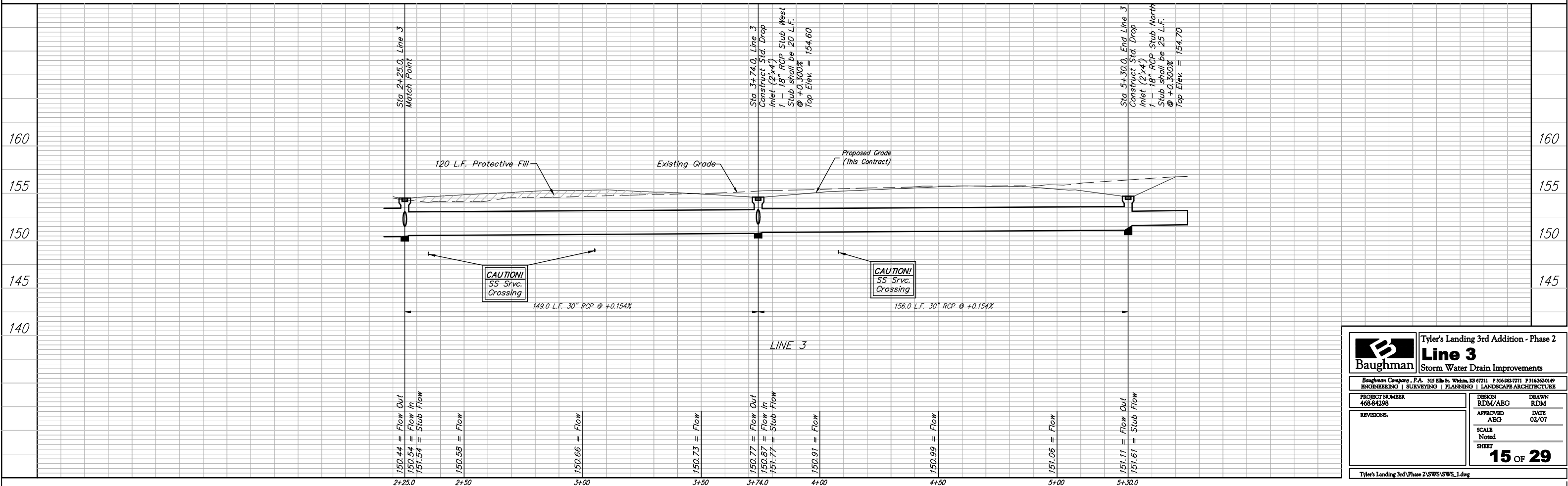
Scale: 1" = 20' Horizontal
 1" = 5' Vertical
 • = Iron



Sta 2+25.0, Line 3
Match Point

Sta 3+74.0, Line 3
Construct Std. Drop
Inlet (2'x4')
1 - 18" RCP Stub West
Stub shall be 20 L.F.
@ +0.300%
Top Elev. = 154.60

Sta 5+30.0, End Line 3
Construct Std. Drop
Inlet (2'x4')
1 - 18" RCP Stub North
Stub shall be 25 L.F.
@ +0.300%
Top Elev. = 154.70



150.44 = Flow Out
150.54 = Flow In
151.54 = Stub Flow

150.58 = Flow

150.66 = Flow

150.73 = Flow

150.77 = Flow Out
150.87 = Flow In
151.77 = Stub Flow

150.91 = Flow

150.99 = Flow

151.06 = Flow

151.11 = Flow Out
151.61 = Stub Flow

Baughman		Tyler's Landing 3rd Addition - Phase 2	
Line 3		Storm Water Drain Improvements	
Baughman Company, P.A. 315 Ellis St. Wichita, KS 67211 P 316-262-7771 F 316-262-0149 ENGINEERING SURVEYING PLANNING LANDSCAPE ARCHITECTURE			
PROJECT NUMBER 468-84298	DESIGN RDM/ABG	DRAWN RDM	DATE 02/07
REVISIONS	APPROVED ABG	SCALE Noted	SHEET 15 OF 29
Tyler's Landing 3rd Phase 2/SWS/SWS_1.dwg			