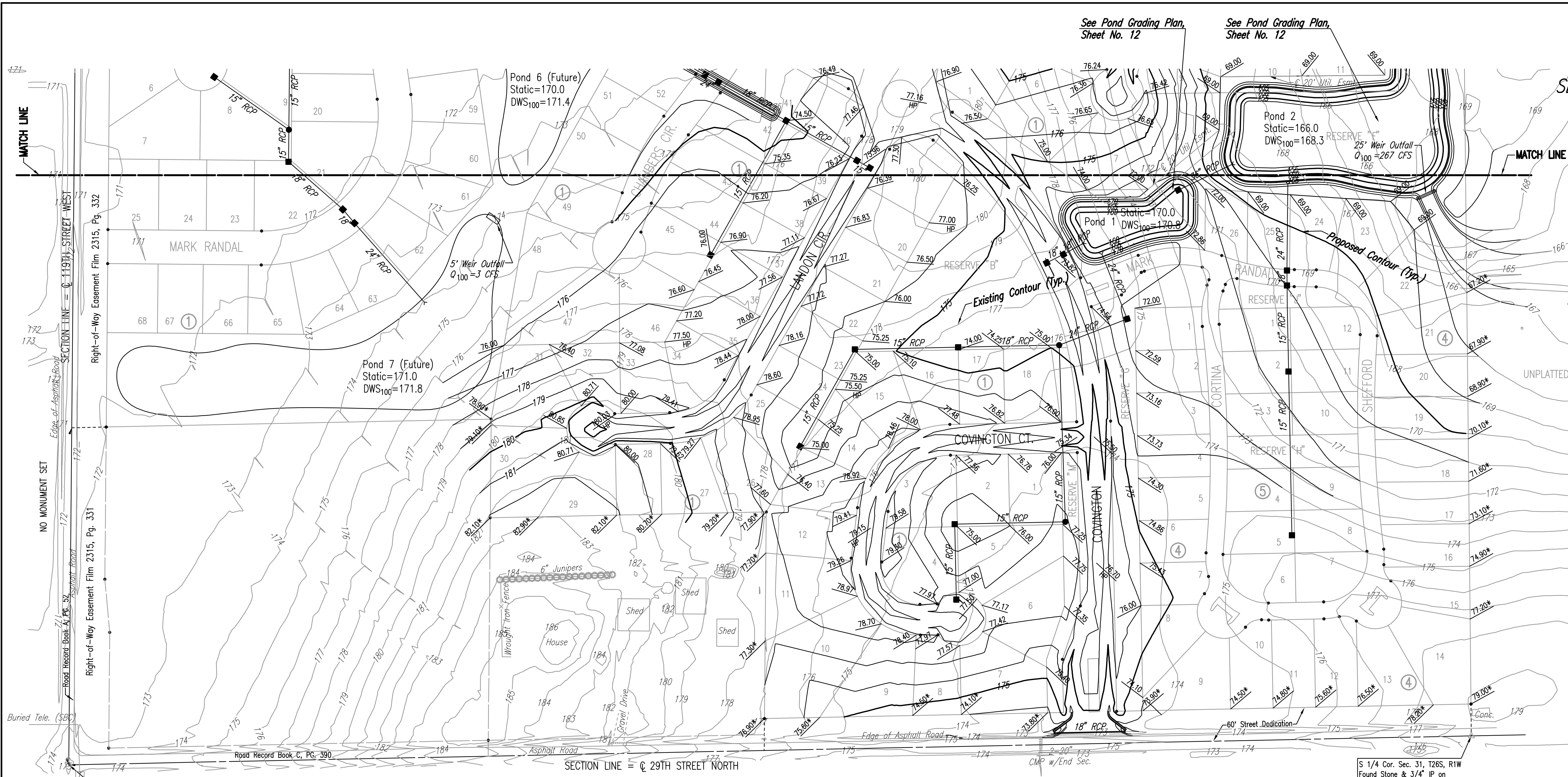
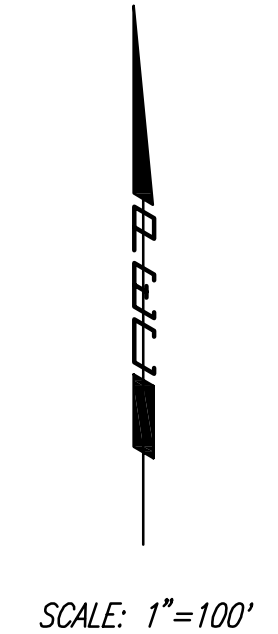


FONTANA

AN ADDITION TO WICHITA,
SEDGWICK COUNTY, KANSAS

SITE GRADING PLAN



- LEGEND**
- SPOT ELEVATION
 - HIGH POINT ELEVATION
 - MATCH EXISTING ELEVATION
 - PROPOSED CONTOUR
 - EXISTING CONTOUR
 - CONTOUR INTERVAL: 1 FOOT

SITE GRADING NOTES

EXCAVATED MATERIAL FROM ON-SITE SHALL BE USED TO PERFORM SITE GRADING AS SHOWN BY THE CONTOURS AND SPOT ELEVATIONS ON THIS PLAN. CONTRACTOR SHALL FIRST GRADE LOTS 1-40, BLOCK 1; LOTS 49 THROUGH 55, BLOCK 3; LOTS 1-4 & 17-26, BLOCK 4; LOTS 1-4 & 9-12, BLOCK 5; RESERVE B; RESERVE G; AND RESERVE M; FONTANA ADDITION; LOTS 1-36, BLOCK 1; AND LOTS 1-8, BLOCK 2; FONTANA 2ND ADDITION. GRADING MAY THEN PROCEED ON LOTS 41-47, BLOCK 1; AND LOTS 35-48, BLOCK 3, FONTANA ADDITION; USING THE FOUR-CORNER PLAN ELEVATIONS; UNTIL ALL WASTE MATERIAL HAS BEEN UTILIZED.

ALL FILL MATERIAL SHALL BE BLADED SMOOTH AND SLOPED TO DRAIN.

FILL MATERIAL SHALL BE PLACED IN 6" LIFTS AND COMPACTED TO 90% STD. DENSITY UNLESS A HIGHER COMPACTIVE EFFORT IS REQUIRED ELSEWHERE IN THE PLANS OR SPECIFICATIONS.

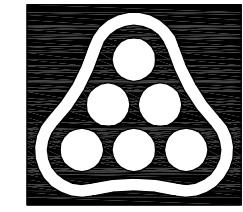
GRADING CONTRACTOR SHALL WORK AROUND, AND PREVENT DAMAGE TO, ALL EXISTING UTILITIES. DAMAGE TO SUCH UTILITIES SHALL BE REPAIRED BY THE CONTRACTOR AT NO ADDITIONAL COST TO THE PROJECT.

FONTANA ADDITION AND THE ADJACENT UNPLATTED TRACT TO THE EAST ARE BOTH OWNED BY THE SAME PARTY; THUS, NO ADDITIONAL DRAINAGE OR CONSTRUCTION EASEMENTS HAVE BEEN PROVIDED OR ARE REQUIRED.

S.W. Cor. Sec. 31, Twp. 26S, R1W
Found Pipe w/ Sedgwick County
Cap in Concrete

S 1/4 Cor. Sec. 31, T26S, R1W
Found Stone & 3/4" IP on
West side

No.	Revision	By	Date
	FONTANA ADDITION-PHASE 1 STORM WATER DRAIN NO. 236		
SITE GRADING PLAN			
JAMES L. ARMOUR, P.E. - CITY ENGINEER CITY OF WICHITA PROJECT NO. 468-83883			
Professional Engineering Consultants, P.A.			
303 S. TOPEKA • WICHITA, KANSAS 67202 316-262-2691 • FAX 316-262-3003			
Designed by	BDB, BLB	Job No.	35-04485-001
Drawn by	BJS	Date	SEPTEMBER 2004
			Sheet 9 of 79



Scaled 12-14-2005 6:56:38 AM by BJS
 Plot Scale 1:100 12-14-2005 5:14:25 PM by BJS
 J:\SENTOUT\2004\04485\2005-12-14 to CITY\SWD 236.DWG (9)-SITE GRAD PLAN