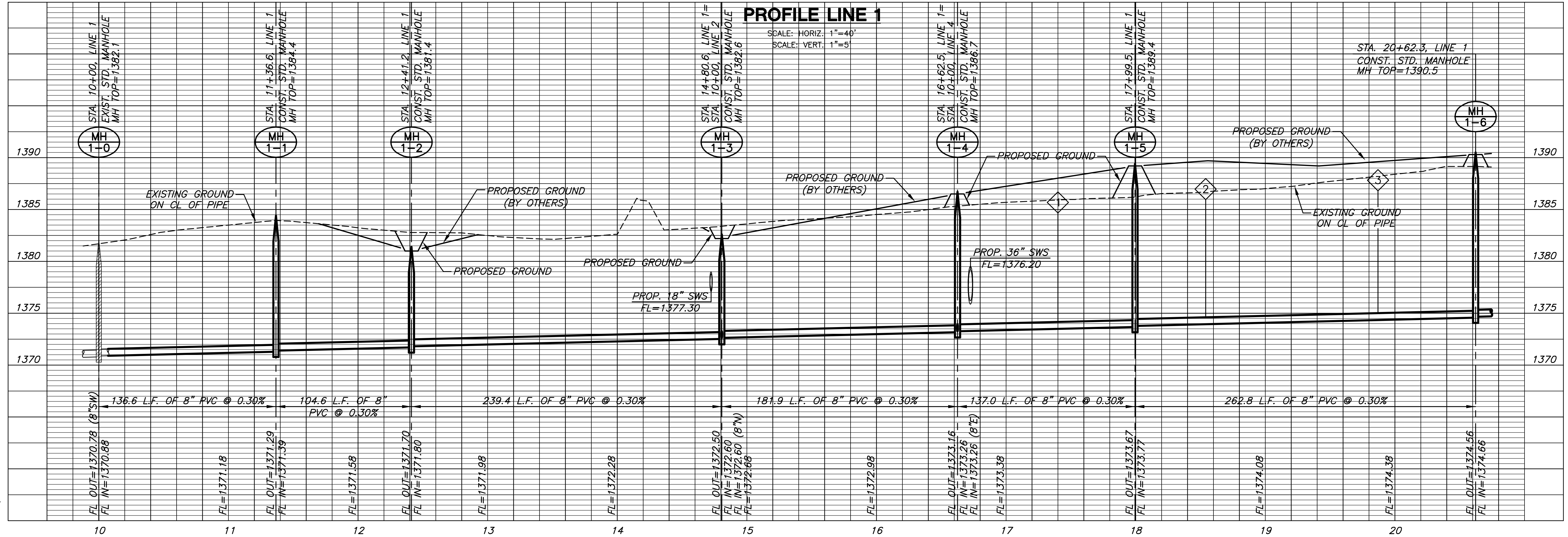


NOTES:
CONTRACTOR TO VERIFY THE DEPTH AND LOCATION OF EXISTING UTILITIES PRIOR TO CONSTRUCTION.
TRENCHES TO BE BACKFILLED WITH SAND AND FLUSHED WHEN SEWER LINE RUNS ALONG FRONT OF LOTS.
(LINE 1, STA. 16+62.5 TO STA. 20+62.3)



PLOTED: Tuesday, October 30, 2007 @ 04:44PM

J:\CIVIL\06266\WORK\SANARY RESIDENTIAL\06266_B1.DWG