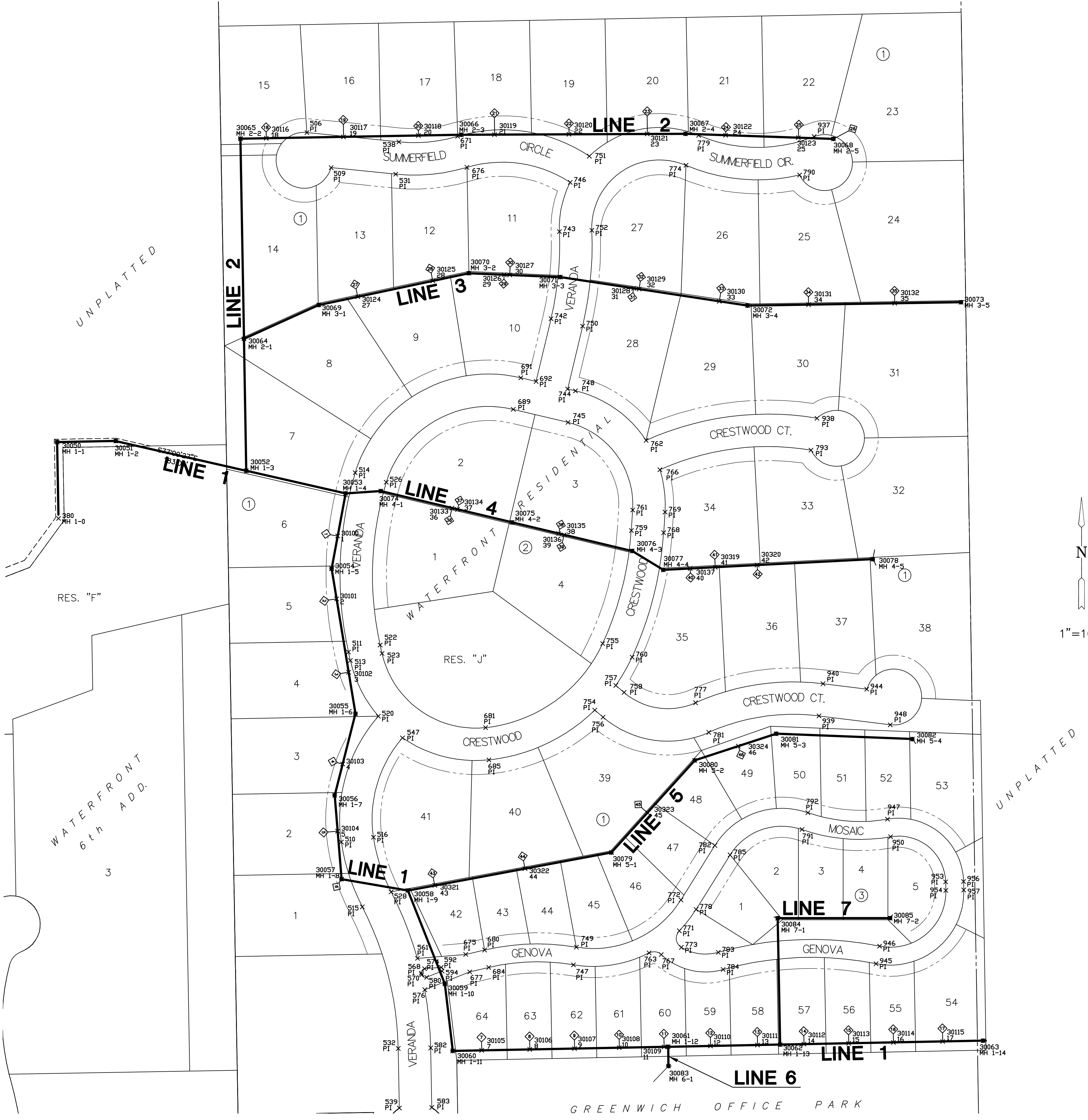


**SANITARY SEWER PLANS FOR
THE WATERFRONT RESIDENTIAL ADD.**



PLAT IRONS			
Point #	Northing	Easting	Desc.
506	1696799.71	1683761.79	PI
509	1696737.03	1683805.04	PI
510	1695531.51	168323.34	PI
511	1695870.91	1683336.09	PI
513	1695855.97	1683339.44	PI
514	1696191.64	1683848.13	PI
515	1695415.64	1683860.87	PI
516	1695540.03	1683880.71	PI
518	1694764.12	1683886.09	PI
519	1694704.13	1683887.15	PI
520	1695756.44	1683889.52	PI
522	1695833.59	1683892.86	PI
523	1695968.65	1683896.03	PI
524	1694704.34	1683899.15	PI
526	1696174.75	1683903.62	PI
528	1695442.37	1683912.34	PI
530	1694764.60	1683913.09	PI
531	1696725.34	1683920.42	PI
532	1695162.50	1683925.07	PI
533	1694530.04	1683925.23	PI
534	1694530.04	1683925.23	PI
535	1694964.39	1683925.67	PI
536	1694494.06	1683925.86	PI
537	1694849.77	1683926.09	PI
538	1696783.05	1683926.26	PI
539	1696055.97	1683926.95	PI
540	1694779.35	1683927.33	PI
541	1694566.99	1683927.91	PI
542	1694675.37	1683929.16	PI
544	1694601.96	1683930.46	PI
546	1694896.68	1683932.49	PI
547	1695717.88	1683932.67	PI
548	1694940.58	1683938.49	PI
549	1694550.19	1683939.08	PI
550	1694804.05	1683950.90	PI
551	1694666.52	1683953.32	PI
553	1694787.21	1683954.94	PI
554	1694520.05	1683955.91	PI
556	1694683.49	1683956.77	PI
557	1694894.33	1683956.92	PI
558	1694782.69	1683957.15	PI
560	1694688.08	1683958.82	PI
561	1695323.54	1683959.43	PI
562	1694894.40	1683960.69	PI
565	1694782.82	1683964.40	PI
567	1694688.21	1683966.07	PI
568	1695297.05	1683966.31	PI
569	1694787.42	1683966.44	PI
570	1695294.28	1683966.95	PI
571	1694683.69	1683968.27	PI
572	1694850.53	1683969.08	PI
573	1694804.38	1683969.89	PI
574	1695305.01	1683972.11	PI
575	1694666.85	1683972.32	PI
576	1695267.49	1683972.54	PI
579	1694520.38	1683974.90	PI
580	1695289.72	1683975.68	PI
581	1694941.26	1683977.48	PI
582	1695163.52	1683983.06	PI
583	1695056.99	1683984.94	PI
584	1694897.61	1683985.02	PI
585	1694965.51	1683989.45	PI
587	1694850.95	1683993.07	PI
589	1694780.53	1683994.32	PI
590	1694676.55	1683996.15	PI
591	1694695.48	1683999.35	PI
592	1695307.42	1684031.70	PI
594	1695300.68	1684003.28	PI
667	1694766.29	1684009.07	PI
668	1694706.57	1684025.13	PI
671	1696793.03	1684031.24	PI
672	1694766.77	1684036.07	PI
673	1694706.78	1684037.13	PI
675	1695330.57	1684045.61	PI
676	1696737.47	1684047.86	PI
677	1695299.41	1684052.90	PI
680	1695338.48	1684079.43	PI
681	1695736.01	1684081.04	PI
684	1695307.32	1684086.71	PI
685	1695678.34	1684087.19	PI
689	1696304.93	1684130.60	PI
691	1696361.35	1684144.04	PI
692	1696354.83	1684171.39	PI
742	1696467.07	1684198.13	PI
743	1696222.58	1684213.20	PI
744	1696341.39	1684227.81	PI
745	1696281.65	1684228.30	PI
746	1696710.60	1684232.30	PI
747	1695312.05	1684238.08	PI
748	1696338.07	1684241.74	PI
749	1695343.60	1684243.41	PI
750	1696453.63	1684254.55	PI
751	1696757.48	1684266.55	PI
752	1696624.93	1684271.15	PI
754	1695767.34	1684276.24	PI
755	1695886.29	1684290.38	PI
756	1695754.77	1684290.88	PI
757	1695611.47	1684313.88	PI
758	1695738.90	1684328.62	PI
759	1696088.25	1684341.61	PI
760	1695862.01	1684343.05	PI
761	1696124.96	1684343.99	PI
762	1696249.49	1684368.00	PI
763	1695333.29	1684373.48	PI
766	1696197.06	1684392.81	PI
767	1695330.33	1684395.17	PI
768	1696084.49	1684399.48	PI
769	1696121.20	1684401.87	PI
771	1695372.86	1684427.33	PI
772	1695427.92	1684430.32	PI
773	1695343.17	1684431.04	PI
774	1696741.26	1684439.25	PI
777	1695780.47	1684456.45	PI
778	1695411.03	1684457.50	PI
779	1696794.66	1684461.88	PI
781	1695727.51	1684480.09	PI
782	1695525.38	1684490.88	PI

PLAT IRONS			
Point #	Northing	Easting	Desc.
783	1695334.37	1684496.99	PI
784	1695303.57	1684505.66	PI
785	1695508.50	1684518.06	PI
790	1696723.77	1684642.23	PI
791	1695553.87	1684646.59	PI
792	1695584.08	1684657.14	PI
793	1696232.03	1684662.78	PI
937	1696792.61	1684668.33	PI
938	1696289.08	1684673.32	PI
939	1695756.90	1684677.03	PI
940	1695814.45	1684684.18	PI
944	1695804.74	1684762.43	PI
945	1695314.00	1684778.96	PI
946	1695345.38	1684785.26	PI
947	1695572.38	1684789.47	PI
948	1695741.10	1684804.26	PI
950	1695540.87	1684804.95	PI
953	1695460.29	1684903.32	PI
954	1695445.01	1684903.72	PI
956	1695461.12	1684935.31	PI
957	1695445.83	1684935.71	PI

SANITARY SEWER POINTS			
Point #	Northing	Easting	Desc.
380	1696109.88	1683317.95	MH 1-0
30050	1696246.50	1683315.54	MH 1-1
30051	1696248.34	1683420.12	MH 1-2
30052	1696195.14	1683653.50	MH 1-3
30053	1696154.89	1683630.91	MH 1-4
30054	1696020.00	1683605.97	MH 1-5
30055	1695760.77	1683848.51	MH 1-6
30056	1695615.04	1683811.43	MH 1-7
30057	1695465.23	1683823.73	MH 1-8
30058	1695444.89	1683942.18	MH 1-9
30059	1695277.94	1684008.33	MH 1-10
30060	1695158.18	1684022.43	MH 1-11
30061	1695165.60	1684407.37	MH 1-12
30062	1695169.45	1684607.58	MH 1-13
30063	1695176.44	1684970.17	MH 1-14
30064	1696431.00	1683649.34	MH 2-1
30065	1696786.82	1683643.02	MH 2-2
30066	1696795.78	1683637.65	MH 2-3
30067	1696797.56	1684438.48	MH 2-4
30068	1696788.30	1684702.80	MH 2-5
30069	1696491.55	1683783.05	MH 3-1
30070	1696548.37	1684051.40	MH 3-2
30071	1696541.36	1684214.73	MH 3-3
30072	1696490.38	1684549.30	MH 3-4
30073	1696496.42	1684930.76	MH 3-5
30074	1696158.81	1683893.84	MH 4-1
30075	1696102.86	1684128.72	MH 4-2
30076	1696051.79	1684343.10	MH 4-3
30077	1696019.00	1684396.69	MH 4-4
30078	1696037.14	1684773.20	MH 4-5
30079	1695512.83	1684308.06	MH 5-1
30080	1695677.42	1684454.91	MH 5-2
30081	1695725.11	1684600.39	MH 5-3
30082	1695715.62	1684843.95	MH 5-4
30083	1695131.01	1684408.02	MH 6-1
30084	1695395.42	1684603.21	MH 7-1
30085	1695395.48	1684804.24	MH 7-2

SANITARY SEWER RISER POINTS			
Point #	Northing	Easting	Desc.
30100	1696078.55	1683816.81	1
30101	1695966.26	1683814.79	2
30102	1695835.02	1683836.32	3
30103	1695670.88	1683825.65	4
30104	1695550.87	1683816.70	5
30105	1695159.18	1684074.13	7
30106	1695160.83	1684160.12	8
30107	1695162.37	1684240.10	9
30108	1695163.91	1684320.09	10
30109	1695165.46	1684400.07	11
30110	1695167.05	1684483.06	12
30111	1695168.67	1684567.04	13
30112	1695170.27	1684650.02	14
30113	1695171.81	1684730.01	15
30114	1695173.35	1684809.99	16
30115	1695175.05	1684897.98	17
30116	1695176.63	1684989.24	18
30117	1695178.27	1685084.22	19
30118	1695179.94	1685181.20	20
30119	1695181.67	1685281.19	21
30120	1695183.46	1685383.18	22
30121	1695185.31	1685490.17	23
30122	1695187.22	1685603.16	24
30123	1695189.19	1685722.15	25
30124	1695191.22	1685847.14	26
30125	1695193.31	1685977.13	27
30126	1695195.46	1686117.12	28
30127	1695197.67	1686263.11	29
30128	1695199.94	1686415.10	30
30129	1695203.27	1686575.09	31
30130	1695206.67	1686742.08	32
30131	1695210.13	1686915.07	33
30132	1695213.64	1687094.06	34
30133	1695217.21	1687284.05	35
30134	1695220.84	1687484.04	36
30135	1695224.54	1687694.03	37
30136	1695228.30	1687914.02	38
30137	1695232.12	1688144.01	39
30138	1695236.00	1688384.00	40
30139	1695239.93	1688634.00	41
30140	1695243.92	1688894.00	42
30141	1695247.96	1689164.00	43
30142	1695252.06	1689444.00	44
30143	1695257.21	1689734.00	45
30144	1695262.42	1690034.00	46

PLOTTED: Tuesday, October 30, 2007 @ 04:48PM

BUBBLE MAP
SHEET TITLE
468-84422
PROJECT NUMBER

DESIGN BY: **DFL**
DRAWN BY: **DMU**
CHECKED BY: **GJA**

ISSUED: **October 2007**
REVISED:

SHEET NO. **14 of 20**

J:\CIVIL\06266\DWG\SAN\RESIDENTIAL\BUBBLE.DWG