

STORM WATER DRAIN #294 CRESTLAKE Project #468-84183 OCA NO. 751423

GENERAL NOTES

Contractor will be required to provide a minimum advance notice of twenty-four (24) hours to utility companies prior to starting any excavation as follows:

Kansas One-Call 1-800-DIG-SAFE

The Contractor must notify the following in case of an emergency:

Cox Communications	262-0661
Kansas Gas Service	383-8600
Westar	383-8600
Peoples Natural Gas Company	1-800-303-0357
SBC	1-800-286-8313
City of Wichita Water Department	262-6000
City of Wichita Sewer Maintenance	262-6000

Underground utility service lines and overhead utility pole lines are to be adjusted as necessary by others prior to construction unless the plans specifically call for their adjustment by the Contractor or unless the plans specifically identify a utility to be adjusted by its owner during construction. Existing utilities and their location, as shown on the plans, represent the best information obtainable for design. Location information has been obtained from the various utility companies and is either from company record drawings or company-provided field locations. The Contractor will be required to work around existing utilities within the right-of-way which do not conflict with proposed construction.

Rubble from the removal of miscellaneous structures and excess excavation which is to be wasted shall be disposed of on sites to be provided by the Contractor. These sites shall be approved by the Engineer as to suitability, appearance and site location. Locations that, in the opinion of the Engineer, will leave an unsightly appearance will not be approved.

Any miscellaneous rubble encountered during construction shall be removed by the Contractor, subsidiary to bid item for Site Clearing and Restoration.

All disposal sites must be approved by the Kansas Department of Health and Environment. Material either stockpiled or disposed of in a flood plain would require a Kansas State Board of Agriculture permit. Any material dumped in waters of the United States or wetlands is subject to U.S. Corps permitting regulations. Any material buried or stockpiled beyond approved of Engineers construction limits would require additional archeological investigations unless buried in a previously approved borrow location.

The Engineer shall take field ties to all quarter section corners. The Contractor shall set a City survey monument in the required location where such quarter section corners fall within the limits of pavement construction. Survey monuments will be furnished by the city. The Engineer will accurately locate and install the iron at the quarter section corner. This work will not be paid for directly, but shall be considered subsidiary to the other pay items of work in the contract.

The Contractor shall notify pipeline companies at least 24 hours in advance of any work being performed across and/or adjacent to pipelines.

The Contractor shall give all property owners and/or tenants of developed property directly abutting the construction of this project a minimum of ten (10) days advance notice prior to start of construction.

The Contractor shall seed, fertilize and mulch all disturbed areas per City of Wichita specifications upon completion of construction.

All materials and construction methods shall adhere to City of Wichita standard specifications.

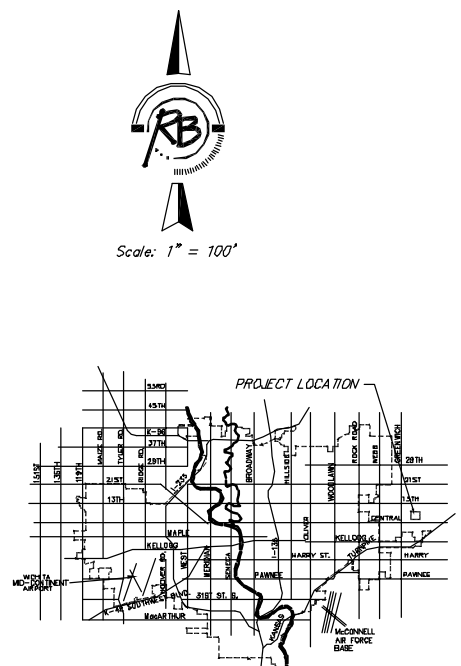
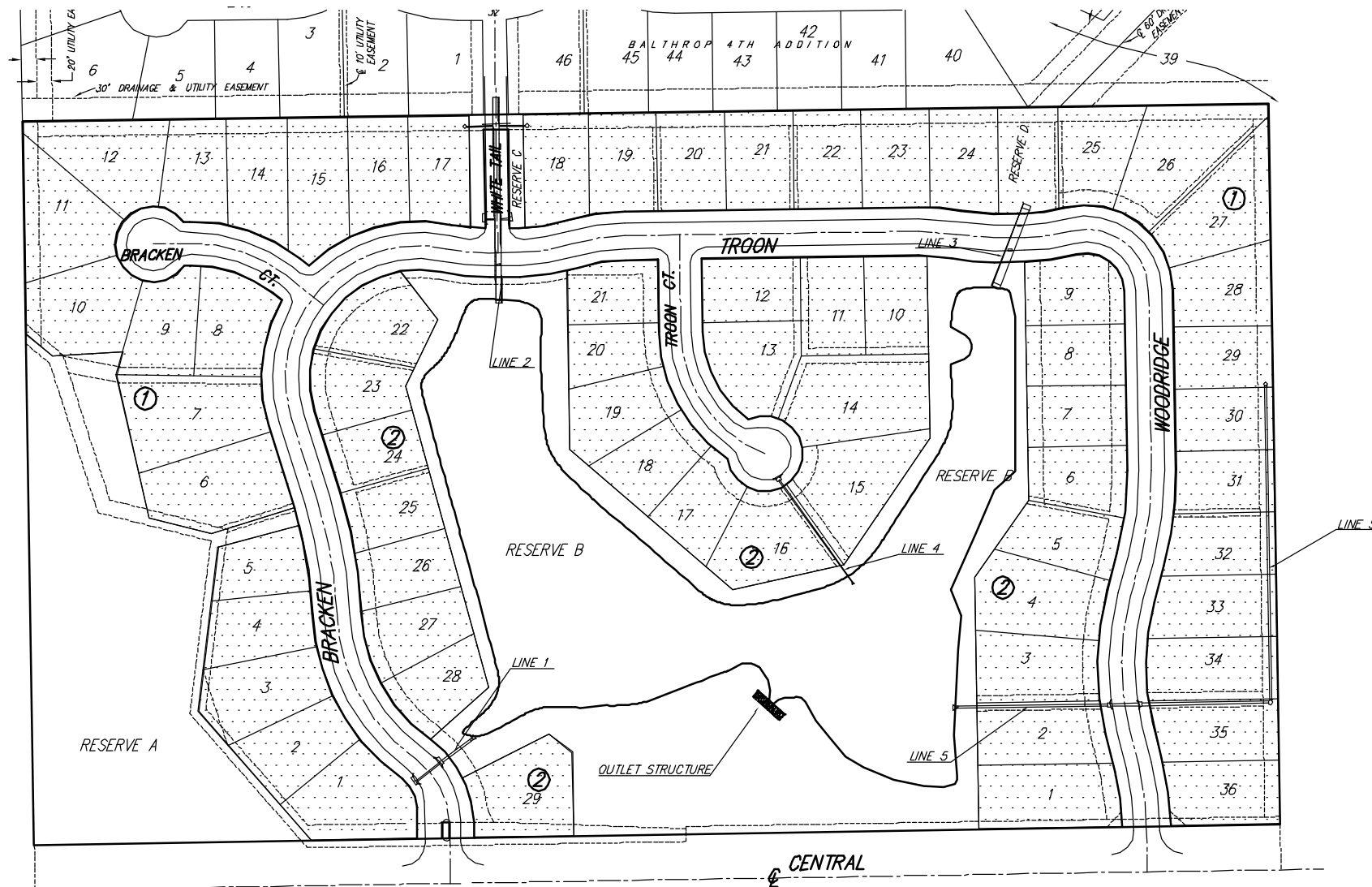
Trees to be removed only as necessary for construction.

BENCHMARK

CITY OF WICHITA DISK, 24 FEET WEST OF THE CENTERLINE OF WHEATLAND (127TH ST. E.) AND 35.50 FEET SOUTH OF THE CENTERLINE OF CENTRAL.
ELEVATION: 154.90 (CITY DATUM)
ELEVATION: 1342.30 (M.S.L.)

INDEX

1. TITLE SHEET
2. SITE GRADING - CONTOURS
3. SITE GRADING - GRADE TICKS
4. POND GRADING PLAN
5. WEIR DETAILS
6. EROSION CONTROL PLAN
- 7-9. SOIL EROSION BMP DETAILS
- 10-14. INCIDENTAL DRAINAGE - STORM SEWER
- 15-16. TYPE 1A INLET DETAILS
17. TYPE P MANHOLE DETAILS
18. BEEHIVE DETAILS
19. RCB DETAILS
20. FINAL PLAT



VICINITY MAP

IMPROVEMENT DISTRICT
CITY OF WICHITA, KANSAS
JAMES ARMOUR, P.E. - CITY ENGINEER



Ruggles & Bohm, P.A.
Engineering, Surveying, Land Planning
924 North Main (316) 264-8008
Wichita, Kansas 67203 (316) 264-4621 fax
www.rbkansas.com E-mail: info@rbkansas.com