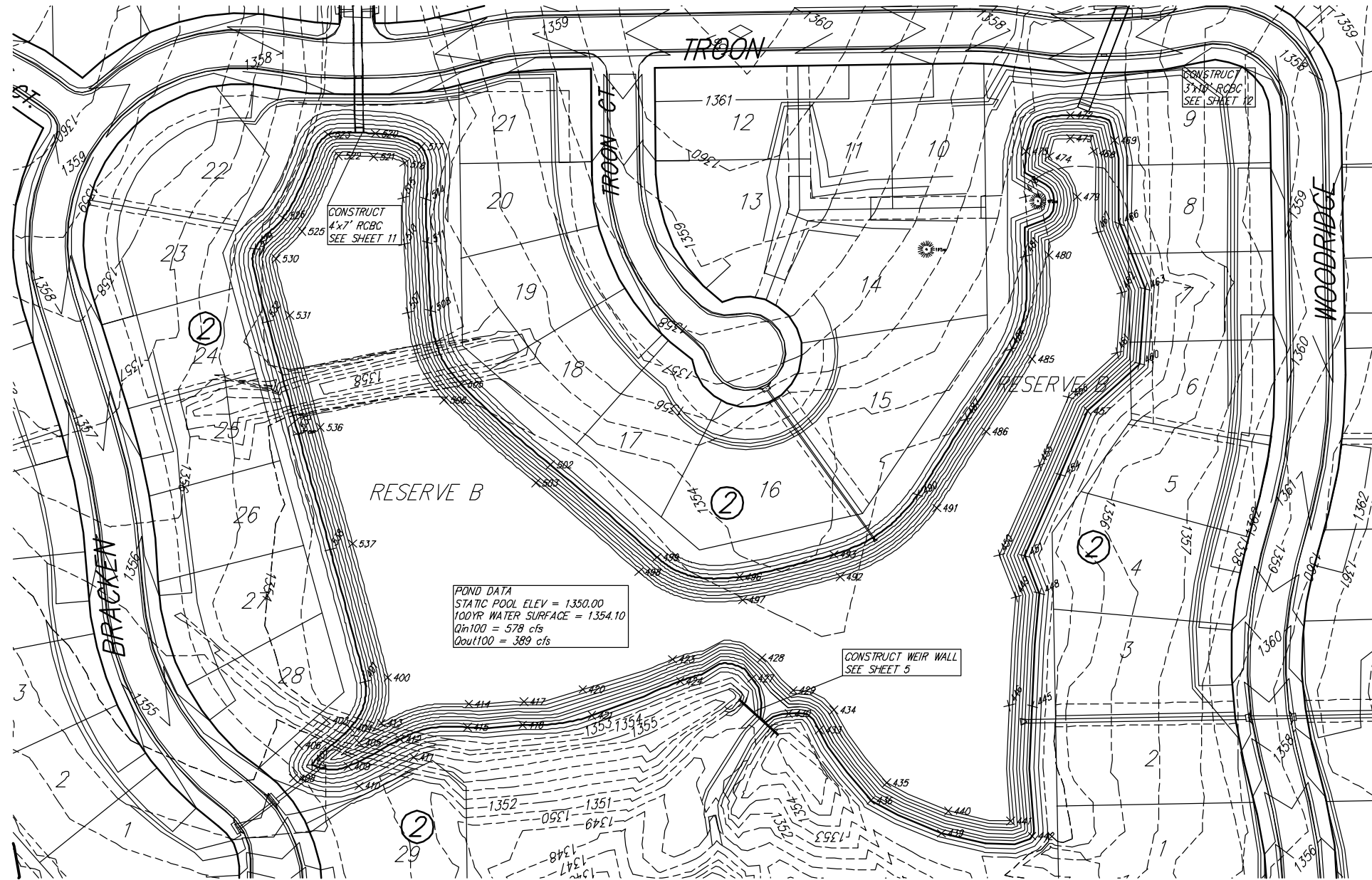


POINT TABLE			
POINT #	NORTHING	EASTING	ELEVATION
400	20237.1799	17987.1206	1347.00
401	20233.3799	17966.4672	1350.00
403	20198.1647	17931.4955	1355.00
404	20191.2597	17952.8418	1350.00
405	20177.9872	17960.9597	1347.00
406	20175.8405	17906.7125	1355.00
407	20157.9933	17918.5325	1350.00
408	20145.9939	17901.3392	1355.00
409	20156.6294	17951.0464	1350.00
410	20139.0371	17960.9458	1355.00
411	20165.0283	18010.5878	1355.00
412	20181.1280	17998.1165	1350.00
413	20195.9671	17981.2955	1347.00
414	20213.0383	18060.6452	1347.00
415	20192.0826	18059.2821	1350.00
417	20215.0651	18110.4986	1347.00
418	20194.0470	18109.3841	1350.00
420	20226.4214	18163.6587	1347.00
421	20202.9867	18172.1467	1350.00
423	20253.6892	18245.1611	1347.00
424	20233.9024	18252.2297	1350.00
427	20236.3744	18316.8148	1350.00
428	20255.1236	18326.2115	1347.00
429	20225.6758	18354.4151	1347.00
430	20204.3939	18350.3273	1350.00
433	20189.4744	18378.3019	1350.00
434	20207.7521	18391.4252	1347.00
435	20141.8039	18439.0733	1347.00
436	20125.6690	18424.8354	1350.00
439	20096.1326	18488.9678	1350.00
440	20116.3212	18495.0631	1347.00
441	20107.2656	18551.3911	1347.00
442	20093.4882	18570.9481	1350.00
445	20211.1657	18571.2248	1350.00
446	20211.6137	18550.2234	1347.00
448	20313.3466	18577.7434	1350.00
449	20310.1930	18556.3942	1347.00
450	20348.0792	18541.2971	1347.00
451	20347.6197	18564.0861	1350.00
454	20421.1126	18596.8644	1350.00
455	20429.4895	18577.6065	1347.00
456	20491.1039	18603.9025	1347.00
457	20478.6510	18621.4204	1350.00
460	20521.3035	18668.3014	1350.00
461	20531.2200	18647.9956	1347.00
462	20586.1054	18652.1740	1347.00
463	20589.3858	18673.4845	1350.00
466	20648.2874	18649.8591	1350.00
467	20640.4697	18630.3685	1347.00
468	20713.9351	18626.3379	1347.00
469	20723.8445	18645.6268	1350.00
472	20746.4993	18605.5888	1350.00
473	20725.4975	18605.6754	1347.00
474	20709.9476	18586.3597	1347.00
475	20714.0038	18565.6760	1350.00
478	20672.9236	18564.4832	1350.00
479	20672.7065	18612.0370	1347.00
480	20619.8185	18586.1730	1347.00
481	20618.6435	18565.2059	1350.00
484	20535.0427	18552.3535	1350.00
485	20525.4711	18571.0787	1347.00
486	20460.0270	18529.3152	1347.00
487	20471.4997	18511.7260	1350.00
490	20402.7444	18467.3993	1350.00
491	20390.5939	18484.5273	1347.00
492	20328.4981	18397.0953	1347.00
493	20348.7102	18391.3711	1350.00
496	20328.2821	18305.7605	1350.00
497	20307.4931	18308.7300	1347.00
498	20332.7945	18214.4782	1347.00
499	20346.2195	18231.0988	1350.00
502	20429.6814	18134.6520	1350.00
503	20413.4459	18121.3325	1347.00
505	20502.8390	18053.5471	1350.00
506	20488.7549	18037.9411	1347.00
507	20567.5096	18005.2232	1347.00
508	20569.3123	18026.1457	1350.00
510	20629.8086	18001.9876	1347.00
511	20631.0568	18022.9507	1350.00
514	20670.5829	18021.8263	1350.00
515	20671.8187	18000.8627	1347.00
516	20703.5123	18001.9446	1347.00
517	20717.9597	18017.5849	1350.00
520	20729.8490	17976.0078	1350.00
521	20708.9099	17974.3954	1347.00
522	20709.8305	17942.4324	1347.00
523	20729.0366	17933.0726	1350.00
525	20641.4905	17909.3233	1347.00
526	20653.8599	17892.3528	1350.00
529	20625.5410	17866.7204	1350.00
530	20616.6749	17885.7572	1347.00
531	20565.2245	17898.1069	1347.00
532	20559.6866	17877.8503	1350.00
535	20458.0998	17905.8561	1350.00
536	20463.6736	17926.1032	1347.00
537	20358.3766	17955.1471	1347.00
538	20352.9241	17934.8673	1350.00



SCALE 1" = 60'

NOTE: THE POND SIDES ARE TO BE SCARIFIED A MINIMUM OF 8 INCHES, MOISTURE CONDITIONED AND RECOMPACTED TO A MINIMUM OF 95 PERCENT OF STANDARD PROCTOR DENSITY (ASTM D-698) FROM MINUS 3 TO PLUS 3 PERCENT OF OPTIMUM MOISTURE CONTENT. ADDITIONALLY, ALL GYPSUM/CALICHE SEAMS, SANDY CLAY AND CLAY SHALE ENCOUNTERED SHOULD BE OVER-EXCAVATED A MINIMUM OF 1 FOOT AND REPLACED WITH CLAY. MINIMUM PI OF THE SOIL USED FOR THE POND LINER IS 30.

CRESTLAKE POND GRADING PLAN WICHITA, KANSAS			
	Ruggles & Bohm, P.A. Engineering, Surveying, Land Planning		DESIGN AML
	924 North Main Wichita, Kansas 67203 www.rbkansas.com		DRAWN MLP
(316) 284-8008 (316) 284-4821 fax E-mail: info@rbkansas.com		REVIEW	SHEET 4
DRAWING FILE SWD {Pond}		PROJECT NUMBER 468-84183	DATE June 14, 2006
			OF 20