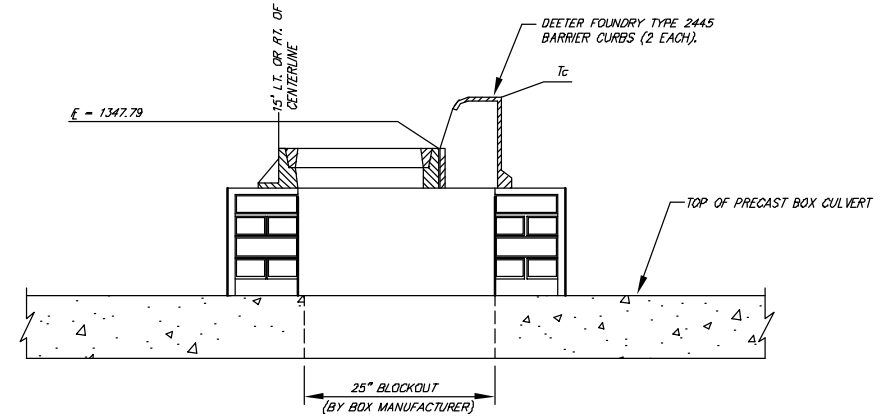
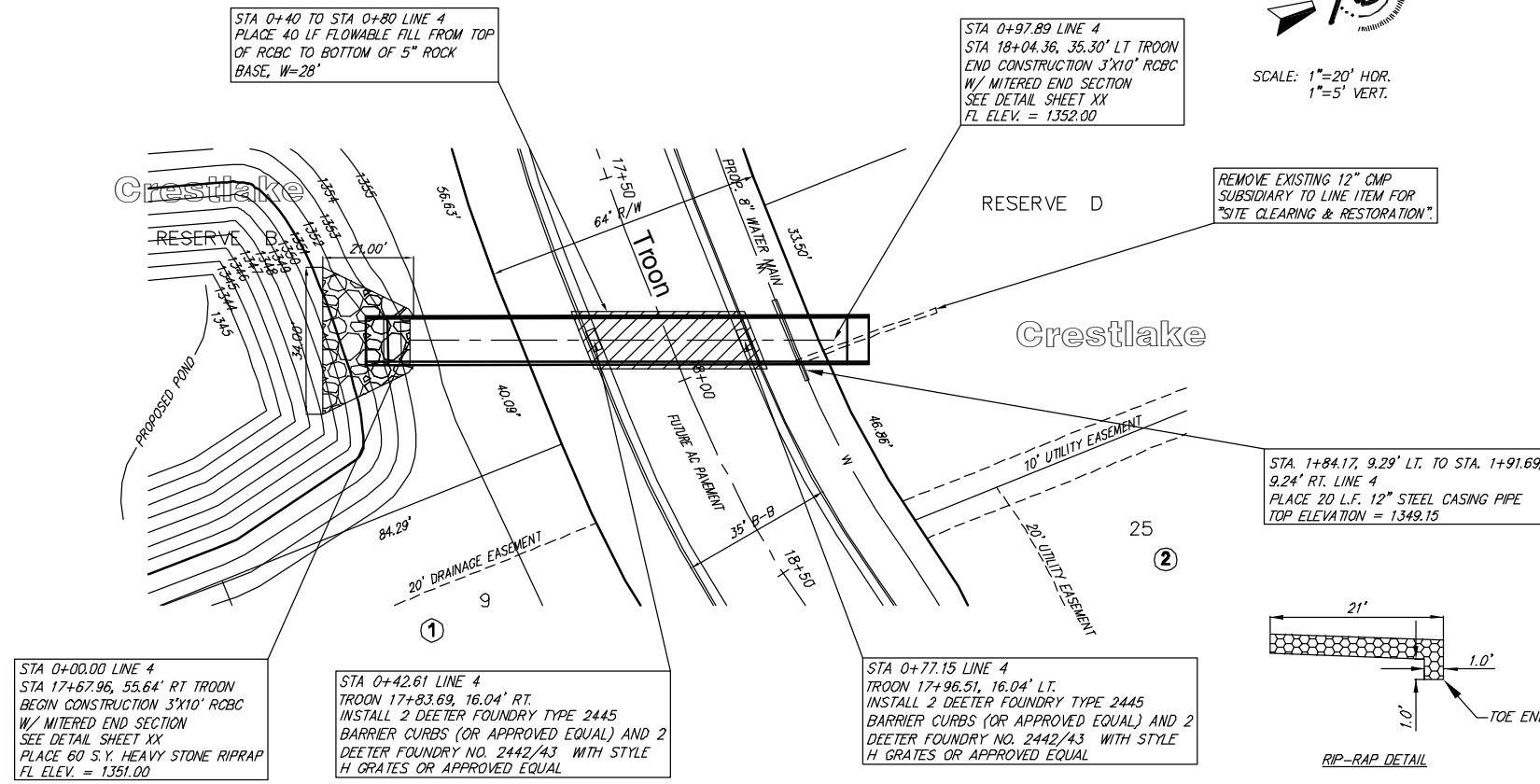


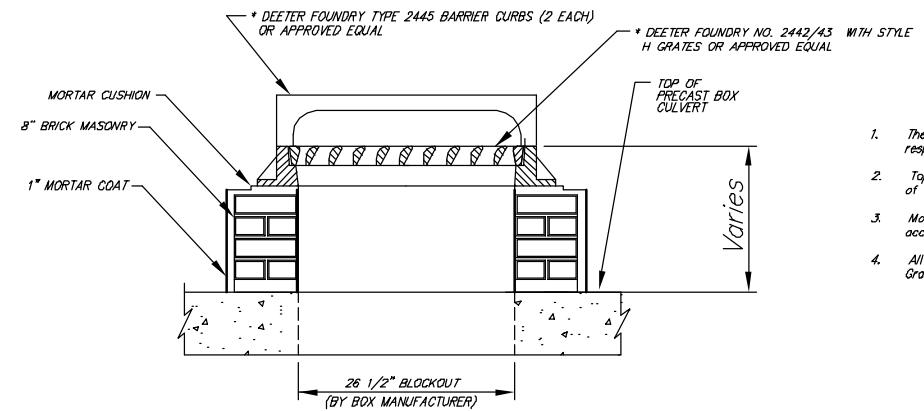


SCALE: 1"=20' HOR.
1"=5' VERT.



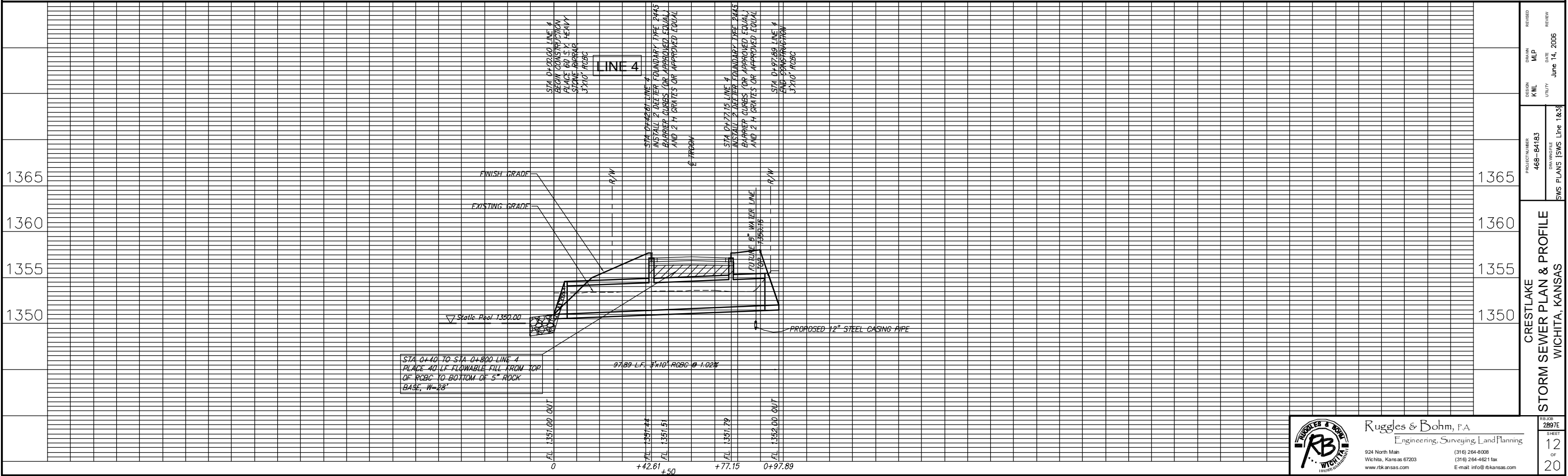
INLET (CURB) (MODIFIED)

* THE ENGINEER WILL CONSIDER AN "EQUIVALENT" OF THE BRAND NAME SPECIFIED. PROVIDE THE ENGINEER WITH A COMPLETE DESCRIPTION, LITERATURE, TEST REPORTS, ETC. ON THE PROPOSED "EQUIVALENT". THE BURDEN OF PROOF REGARDING THE "EQUIVALENT" WILL BE UPON THE CONTRACTOR.



GENERAL NOTES:

- The vanes of the grates shall be oriented with respect to the flow arrows shown on the plans.
- Top of inlet shall be sloped to match the slope of the adjacent curb.
- Mortar used in masonry construction shall be in accordance with standard specifications.
- All brick used in stack construction shall meet Grade ASTM C32 for MM or MS.



RUGGLES & BOHM
WICHITA, KANSAS

Ruggles & Bohm, P.A.
Engineering, Surveying, Land Planning
924 North Main
Wichita, Kansas 67203
www.rtkansas.com

(316) 264-8008
(316) 264-4621 fax
E-mail: info@rtkansas.com

PROJECT NUMBER: 468-84183
DATE: June 14, 2006
REVISION: 1

CRESTLAKE
STORM SEWER PLAN & PROFILE
WICHITA, KANSAS

SHEET 12 OF 20