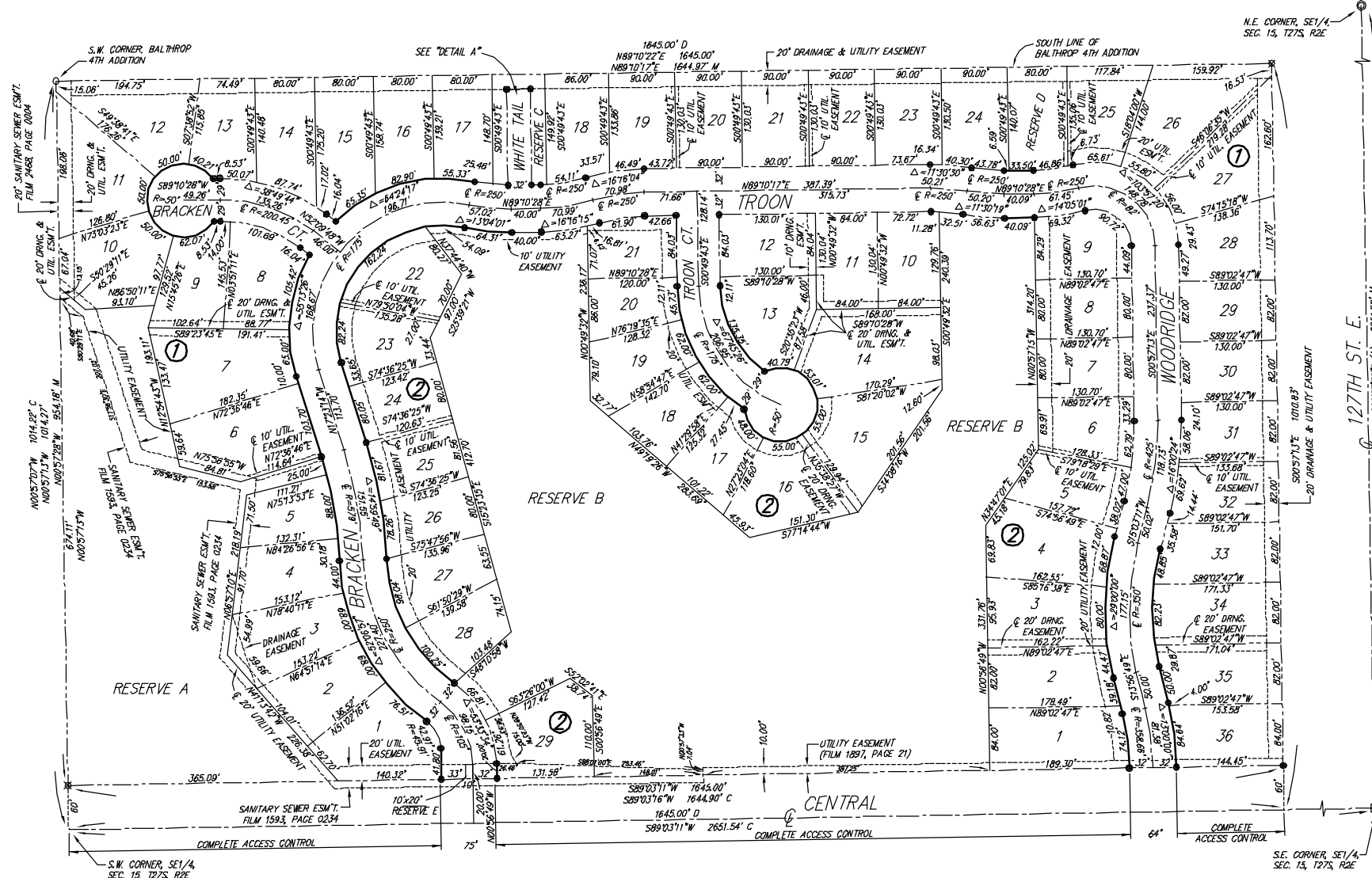


CRESTLAKE

Wichita, Sedgwick County, Kansas



State of Kansas) SS
Sedgwick County)

We, Ruggles & Bohm, P.A., Land Surveyors in aforesaid county and state, do hereby certify that, under the supervision of the undersigned, we have surveyed and platted "CRESTLAKE", Wichita, Sedgwick County, Kansas, and that the accompanying plat is a true and correct exhibit of the property surveyed, described as follows:

LEGAL DESCRIPTION:
The west 1645 feet of the south 60 acres of the SE1/4 of Sec. 15, T27S, R2E of the 6th P.M., Sedgwick County, Kansas, EXCEPT the south 60 feet for road.

Ruggles & Bohm, P.A.
Thomas C. Ruggles
Land Surveyor

Know all men by these presents that we, the undersigned, have caused the land described in the surveyor's certificate to be platted into Lots, Blocks, Reserves and Streets to be known as "CRESTLAKE", Wichita, Sedgwick County, Kansas. Utility easements are hereby granted for the construction and maintenance of all public utilities. Drainage easements are hereby granted to the public as indicated for drainage purposes. Reserve "A" is hereby reserved for irrigation, landscaping, drainage, drainage structures and utilities confined to easements. Reserves "B and D" are hereby reserved for irrigation, landscaping, drainage, drainage structures, ponds and utilities confined to easements. Reserve "C" is hereby reserved for an Emergency Access Easement and open space. It shall permit utilities, drainage, drainage structures and a gate for emergency access purposes. Reserve "E" is hereby reserved for entry features, signage, irrigation, lighting and landscaping. The Reserves shall be owned and maintained by the Home Owners Association for the addition. The streets are hereby dedicated to and for the use of the public. Access Controls as indicated are hereby granted to the appropriate governing body. A drainage plan has been developed for this plat; all drainage easements and reserves shall remain at established grades, or as modified with the approval of the City Engineer, and unabstracted to allow for the conveyance of storm water.

RRT L.L.C.
Tim Buchanan
President

State of Kansas) SS
Sedgwick County)

The foregoing instrument acknowledged before me, this _____ day of _____, 2006, by Tim Buchanan, President, on behalf of RRT L.L.C.

Notary Public

My appointment expires _____

This plat of "CRESTLAKE", Wichita, Sedgwick County, Kansas, has been submitted to and approved by the Wichita-Sedgwick County Metropolitan Area Planning Commission, Wichita, Kansas.

Dated this _____ day of _____, 2006.
Wichita-Sedgwick County Metropolitan Area Planning Commission
Harold L. Warner, Jr. Chair
John L. Schlegel Secretary

This plat approved and all dedications shown hereon accepted by the City Council of the City of Wichita, Kansas, this _____ day of _____, 2006.

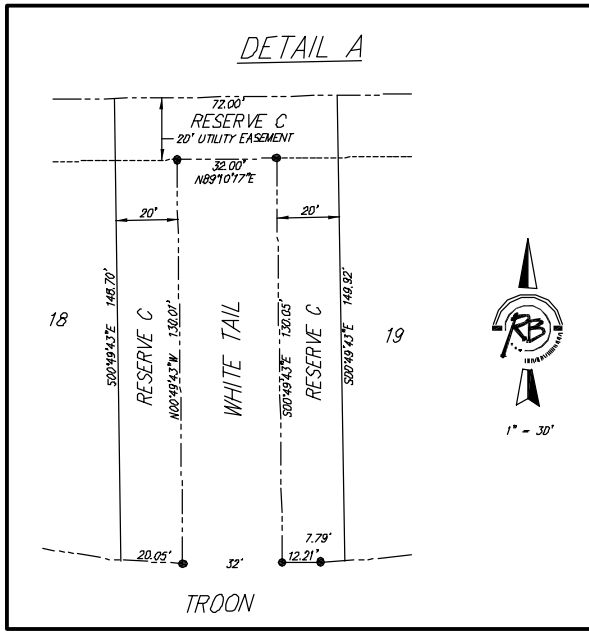
At the Direction of the City Council
Carlos Mayans Mayor
Karen Sublett City Clerk

Reviewed in accordance with K.S.A. 58-2005 on this _____ day of _____, 2006.
Tricia L. Robello, LS #1246
Deputy County Surveyor
Sedgwick County Kansas

Entered on transfer record this _____ day of _____, 2006.
Don Brace
County Clerk

State of Kansas) SS
Sedgwick County)
This is to certify that this plat has been filed for record in the office of the Register of Deeds, this _____ day of _____, 2006, at _____ o'clock _____ M., and is duly recorded.

Register of Deeds
Bill Meek
Deputy
Tonya Buckingham



1" = 100'

M - Measured
C - Calculated
P - Described
A - Assumed

SETBACK LINES PER ZONING REGULATIONS

SURVEY MARKER LEGEND

- ⊕ 1" LEAD PLUG (FOUND)
- ⊙ 3/4" IRON PIPE (FOUND)
- ⊖ 1/2" REBAR W/BAUGHMAN CAP (FOUND)
- ⊗ 5/8" REBAR W/RUGGLES & BOHM CAP (FOUND)
- 5/8" REBAR W/RUGGLES & BOHM CAP (SET)

BENCH MARK: CITY OF WICHITA DISK, 24.00' WEST OF THE CENTERLINE OF WHEATLAND (127TH ST. E.) AND 35.50 FEET SOUTH OF THE CENTERLINE OF CENTRAL. ELEV. = 154.90 (CITY DATUM). ELEV. = 1342.30 (M.S.L.)

BLOCK	LOT NO.	ELEVATION (M.S.L.)	
1	1, 2, 3, 4, 5	1352.0	
	6, 7, 8, 9, 10		
	24, 25		
	2		1, 2, 3, 4, 5, 6, 7, 8, 9, 10, 11, 12, 13, 14, 15, 16, 17, 18, 19, 20, 21, 22, 23, 24, 25, 26, 27, 28, 29

