

GENERAL NOTES:

1. Contractor will be required to provide notice to utility companies a minimum of twenty-four (24) hours prior to any excavation, as follows:

Kansas One-Call 687-2470

The Contractor must notify the following in case of an emergency:

- Cox Communications 262-4270
- Kansas Gas Service 1-888-482-4950
- Westar Energy 383-8650
- Aquila Energy 1-800-303-0357
- SBC 268-2245
- City of Wichita Water Dept. 268-4563
- City of Wichita Sewer Maint. 268-4024
- City of Wichita Storm Sewer Maint. 268-4090
- City of Wichita Traffic Maint. 268-4034
- Conoco Pipeline Co. 1-800-231-2551
- Southern Star Pipeline Co. 529-6600
- Phillips Pipeline Co. 1-800-766-8230
- Jayhawk Pipeline Co. 1-888-542-9575

2. Utility service lines, poles, valve boxes, meters, etc. are to be adjusted as necessary by others prior to construction unless the plans specifically call for their adjustment by the Contractor or unless the plans specifically identify a utility to be adjusted by its owner during construction. Existing utilities and their location, as shown on the plans, represent the best information obtainable for design. The Contractor will be required to work around existing utilities within the right-of-way which do not conflict with proposed construction.

3. Rubble from the removal of miscellaneous structures and excess excavation which is to be wasted shall be disposed of on sites to be provided by the Contractor. These sites shall be approved by the Engineer as to suitability, appearance and site location. Locations, in the opinion of the Engineer, will leave an unsightly appearance will not be approved. All disposal sites must be approved by the Kansas Department of Health and Environment. Material either stockpiled or disposed of in a flood plain would require a Kansas State Board of Agriculture permit. Any material dumped in waters of the United States or wetlands is subject to U.S. Corps. of Engineers permitting regulations. Any material buried or stockpiled beyond approved construction limits would require additional archaeological investigations unless buried in a previously approved borrow location.

4. Trees and shrubs in public right-of-way which are in direct conflict with proposed new construction shall be removed by the Contractor with the Engineer's approval. Trees and shrubs which are not in direct conflict with proposed new construction shall be saved and protected from damage.

5. The Contractor shall give all property owners and/or tenants of developed property abutting the construction of this project a minimum of ten (10) days advance notice prior to start of construction.

6. The Contractor shall be responsible for preserving property irons. The Contractor will be required to re-establish any property irons which are damaged or destroyed by his construction operations. Such irons shall be re-established by a licensed land surveyor in accordance with state laws.

7. All existing and proposed erosion control measures including silt fencing, erosion control mat, straw bales, inlet barriers, and const. entrance shall be maintained throughout construction by the contractor and until project is accepted by the City of Wichita. The on-site engineer shall complete weekly reports on the status of erosion control measures. The contractor shall be required to comply with maintenance and/or replacement of erosion control measures as determined by the on-site engineer until project is accepted by City of Wichita. Maintenance and/or replacement of erosion control measures to be paid by L.S. bid item "Erosion Control BMP's."

8. The contractor shall adjust valve boxes as necessary to match proposed grade. Cost to be included in bid item, "Site Clearing & Restoration."

9. All excess excavation shall remain on-site and be stockpiled at a location determined by the engineer.

10. All areas disturbed during construction within Reserves and Street R/W's shall be seeded, mulched, and fertilized as follows unless otherwise noted (Permanent Seeding):

Seed: Kansas Premium Fescue Blend: 8 lbs./1000 sq. ft.
 Mulch: Prairie Hay: 2 tons/acre
 Fertilizer: 12-24-12: 850 lbs./acre

All other areas disturbed during construction shall be seeded and mulched as follows (Temporary Seeding):

Seed: Rye Grass: 5 lbs./1000 Sq. Ft.
 Mulch: Prairie Hay: 2 tons/acre

All costs associated with seeding, mulching, and fertilizing shall be included in bid item "Project Seeding." All seeding operations shall conform to City of Wichita Standard Specifications.

11. A saw cut of at least one-half the depth of existing surface courses of one-fourth the depth of the existing total pavement thickness shall be provided at locations where proposed construction abuts as existing surface course or pavement for which partial removal of that surface or pavement is required. Sawed joint to facilitate removal within three (3) feet of existing joints will not be permitted and for such instances the limits of removal shall extend to the existing joint. Such saw cuts will not be paid for directly and this cost shall be considered as subsidiary to the removal of the surface or pavement.

STREET PAVING FOR 44TH ST. S.
 to serve

HIDDEN GLEN ADDITION - PHASE 2

Sunview from Lulu Ave, East to Ellis
 Ellis from the South line of Lot 30, Block B, North to 44th Street South
 44th Street South from the West line of Lot 1, Block D, West to Ellis
 Marie from East side Lot 4, Block B, West to Ellis

CITY OF WICHITA, KANSAS

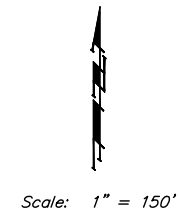
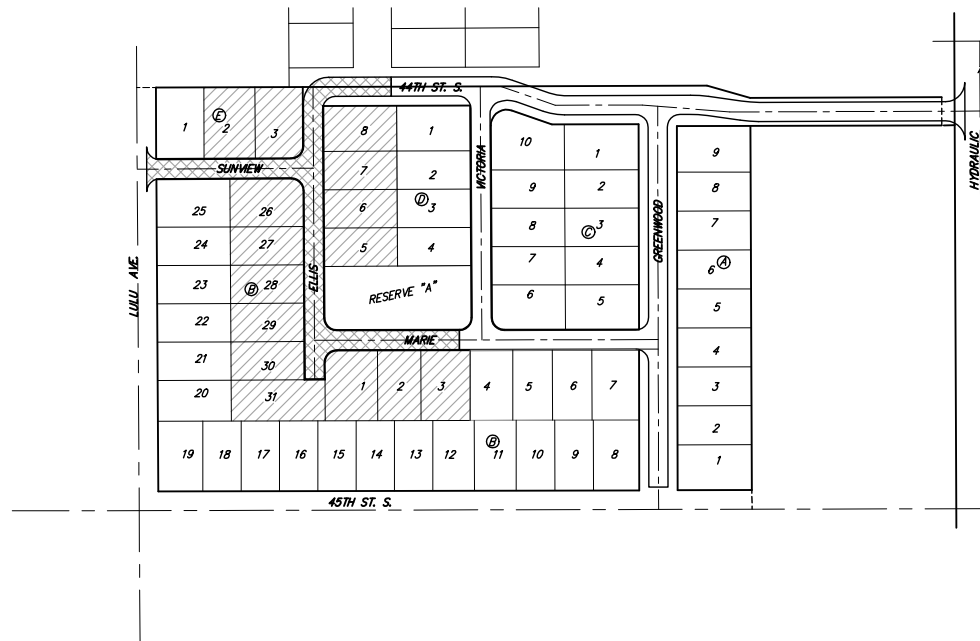
James L. Armour, P.E. City Engineer

Project Number

472-83626

O.C.A. Number

766118



Benchmarks

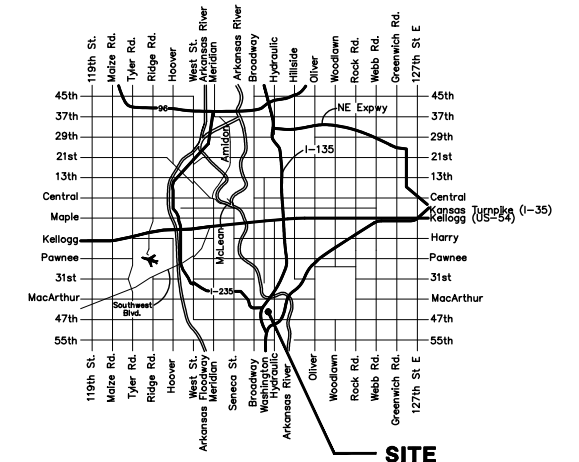
"□" Top of curb, north return, Northwest corner of 43rd and Hydraulic. Elev. = 82.33

Small Railroad Spike in West face of Power Pole, East of 44th and Hydraulic. Elev. = 82.84

Railroad Spike in Light Pole, Southwest corner of 45th and Victoria. Elev. = 84.74

Sheet Index

Title Sheet	1
29' Pavement Detail	2
Sign Detail	3
Miscellaneous Details	4
Sunview.	5
Ellis/44th St. S.	6
Marie	7
Erosion Control Plan	8
Mass Grading Plan	8B
Soil Erosion BMPs	9-12
Street X-Sections	13-16
Copy of Plat	17



Vicinity Map

Benefit District

Proposed Streets:

Right-of-Way Earthwork Totals
 Excavation = 1232.7 C.Y.
 Compacted Fill = 5.6 C.Y.
 Loose Fill = 931.2 C.Y.

Total Project Length
 850 L.F. = 0.16 Miles

November 2006

Baughman Company, P.A. 315 Ellis St. Wichita, KS 67211 P 316-262-7271 F 316-262-0149
 ENGINEERING | SURVEYING | PLANNING | LANDSCAPE ARCHITECTURE