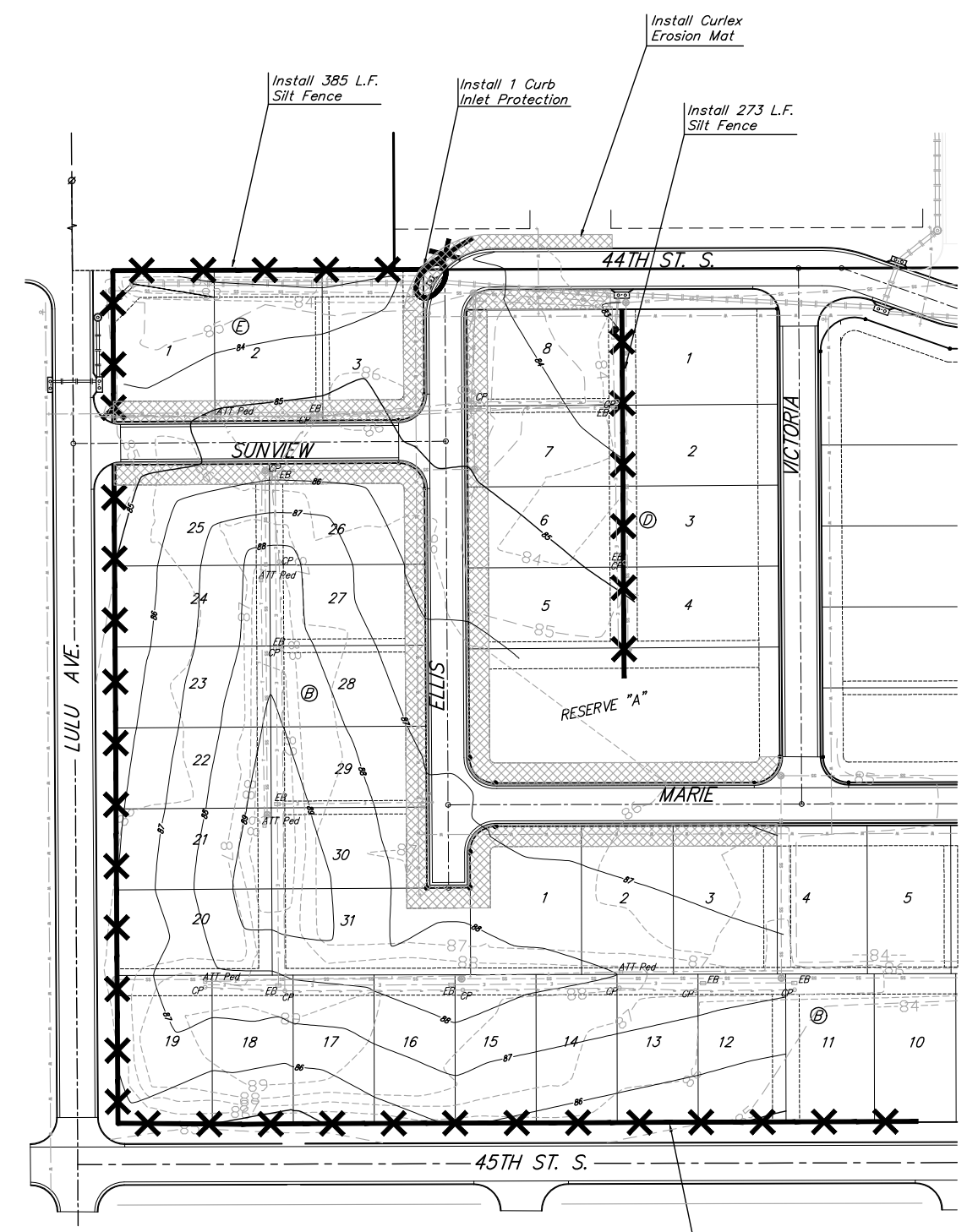




Scale: 1" = 60'



NOTE: Contractor shall remove & replace existing erosion control measures as necessary for construction. Contractor shall be required to maintain all on-site erosion control items until final acceptance by the City of Wichita.

EROSION CONTROL PLAN LEGEND
 (Installation Details Found in the SWP2 Plan)

- LIGHT STONE RIP-RAP
- DROP INLET PROTECTION
- CURB INLET PROTECTION
- STRAW BALE BARRIERS
- SILT FENCING
- EARTH DIKES
- CURLEX EROSION MAT

NO SCALE

EROSION CONTROL MEASURE	UNITS	QUANTITY
SILT FENCE	L.F.	1740
RIPRAP	S.Y.	-
DROP INLET BARRIER	EA.	-
CURB INLET BARRIER	EA.	1
STRAW BALE DITCH CHECK	EA.	-
TRENCH & BERM	L.F.	-
CURLEX	S.Y.	3495
POND E.C. BLANKET	S.Y.	-
Construction Entrance	EA.	-

QUANTITIES ARE FOR INFORMATION ONLY!
 CONTRACTOR SHALL VERIFY QUANTITIES PER FINAL BID QUANTITY SHEET.

Install 1082 L.F. Silt Fence

Baughman

Hidden Glen - Ph. 2

EROSION CONTROL PLAN

PAVING IMPROVEMENTS

Baughman Company, P.A. 315 Ellis St. Wichita, KS 67211 P 316-262-7271 F 316-262-0149
 ENGINEERING | SURVEYING | PLANNING | LANDSCAPE ARCHITECTURE

PROJECT NUMBER 472-83626	DESIGN MWS	DRAWN JEB
REVISIONS:	APPROVED	DATE 10-06
	SCALE Noted	
	SHEET	

8 OF 17

E:\eng\HiddenGlenPh2\ecplan.dwg 06-03-E514