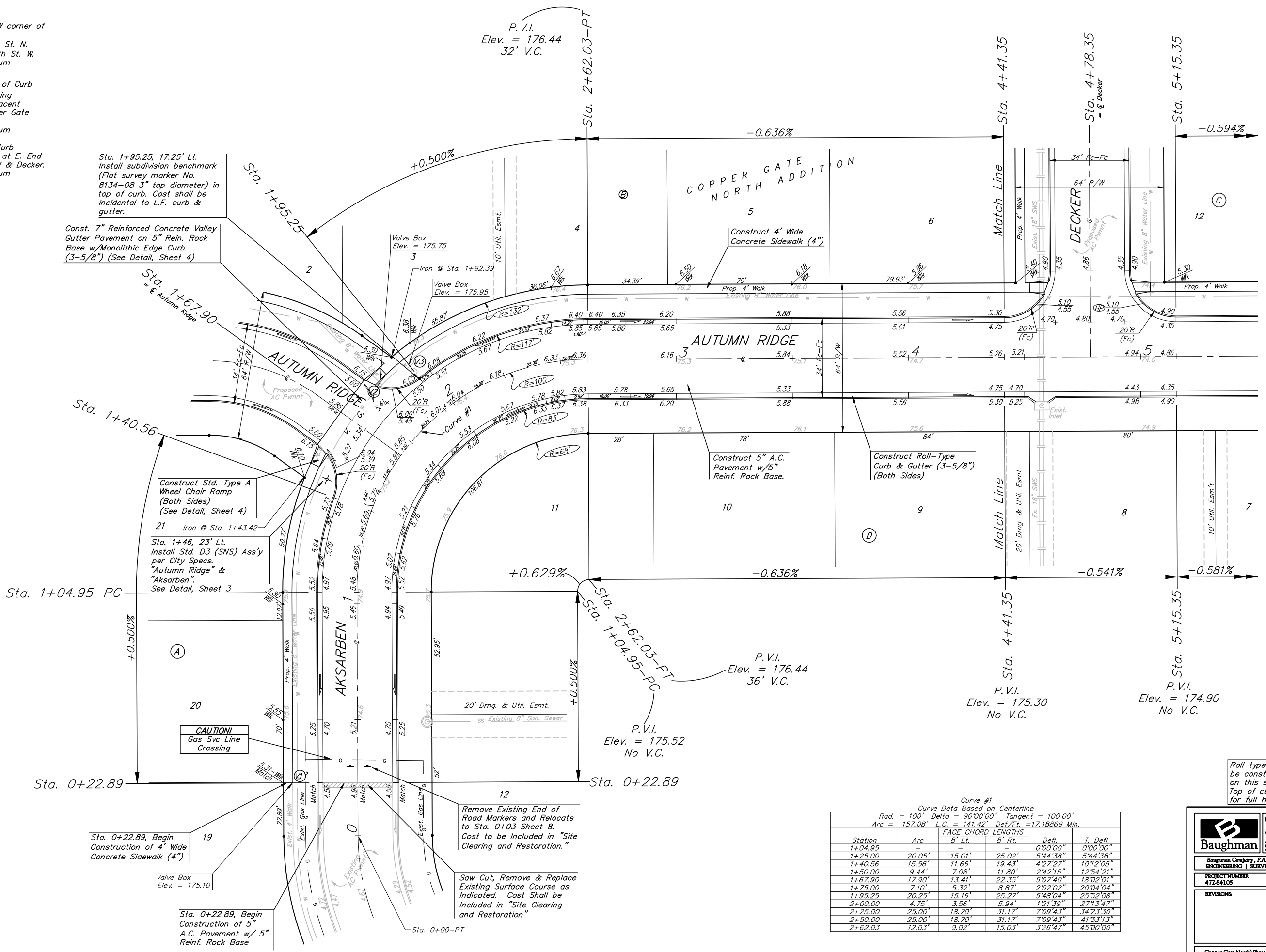
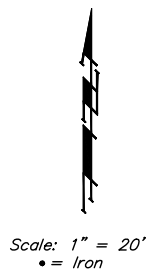


BENCHMARKS:
 BM #1: C.O.W. disc at SW corner of intersection.
 30.00'± S. of CL of 13th St. N.
 35.00'± W. of CL of 135th St. W.
 Elev. = 168.25 City Datum

BM #2: "□" Cut in Top of Curb
 10' South of end of Existing
 Pavement, East Curb adjacent
 to Lot 12, Block D, Copper Gate
 North Addition.
 Elev. = 174.73 City Datum

BM #3: BM Disc in top Curb
 Adjacent to Fire Hydrant at E. End
 of N. Curb Return of Kiwi & Decker.
 Elev. = 173.64 City Datum



Curve #1
 Curve Data Based on Centerline
 Rad. = 100' Delta = 90°00'00" Tangent = 100.00'
 Arc = 157.08' L.C. = 141.42' Def./Ft. = 17.18869 Min.

Station	FACE CHORD LENGTHS		Defl.	T. Defl.
	8' Lt.	8' Rt.		
1+04.95	-	-	0°00'00"	0°00'00"
1+25.00	20.05'	15.01'	25.02'	5°44'38"
1+40.56	15.56'	11.66'	19.43'	4°27'27"
1+50.00	9.44'	7.08'	11.80'	2°42'15"
1+67.90	17.90'	13.41'	22.35'	5°07'40"
1+75.00	7.10'	5.32'	8.87'	2°02'02"
1+95.25	20.25'	15.16'	25.27'	5°48'04"
2+00.00	4.75'	3.56'	5.94'	1°21'39"
2+25.00	25.00'	18.70'	31.17'	7°09'43"
2+50.00	25.00'	18.70'	31.17'	7°09'43"
2+62.03	12.03'	9.02'	15.03'	3°26'47"

Roll type curb & gutter to be constructed on the pavement on this sheet.
 Top of curb elevation are given for full height curb.

Baughman Engineering | Surveying | Planning | Landscape Architecture

Copper Gate North Addition - Phase II
AKSARBEN/AUTUMN RIDGE
 STA. 0+22.89 TO STA. 4+41.35

PROJECT NUMBER: 472-84105
 DESIGN: NEW/JAK
 DRAWN: TMS

APPROVED: [Signature]
 DATE: 9/06/06

SCALE: Noted
 SHEET: **5 OF 23**

Copper Gate North/Phase 2/Sheet 06-04-E526