

**BENCHMARKS:**  
 BM #1: C.O.W. disc at SW corner of intersection.  
 30.00± S. of CL of 13th St. N.  
 35.00± W. of CL of 135th St. W.  
 Elev. = 168.25 City Datum

BM #2: "□" Cut in Top of Curb  
 10' South of end of Existing  
 Pavement, East Curb adjacent  
 to Lot 12, Block D, Copper Gate  
 North Addition.  
 Elev. = 174.73 City Datum

BM #3: BM Disc in top Curb  
 Adjacent to Fire Hydrant at E. End  
 of N. Curb Return of Kiwi & Decker.  
 Elev. = 173.64 City Datum

Curve #2  
 Curve Data Based on Centerline  
 Rad. = 900' Delta = 5° 47' 45" Tangent = 45.56'  
 Arc = 91.04' L.C. = 91.00' Def/Ft. = 1.90987 Min.

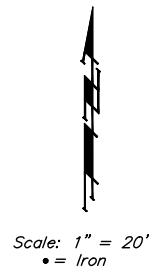
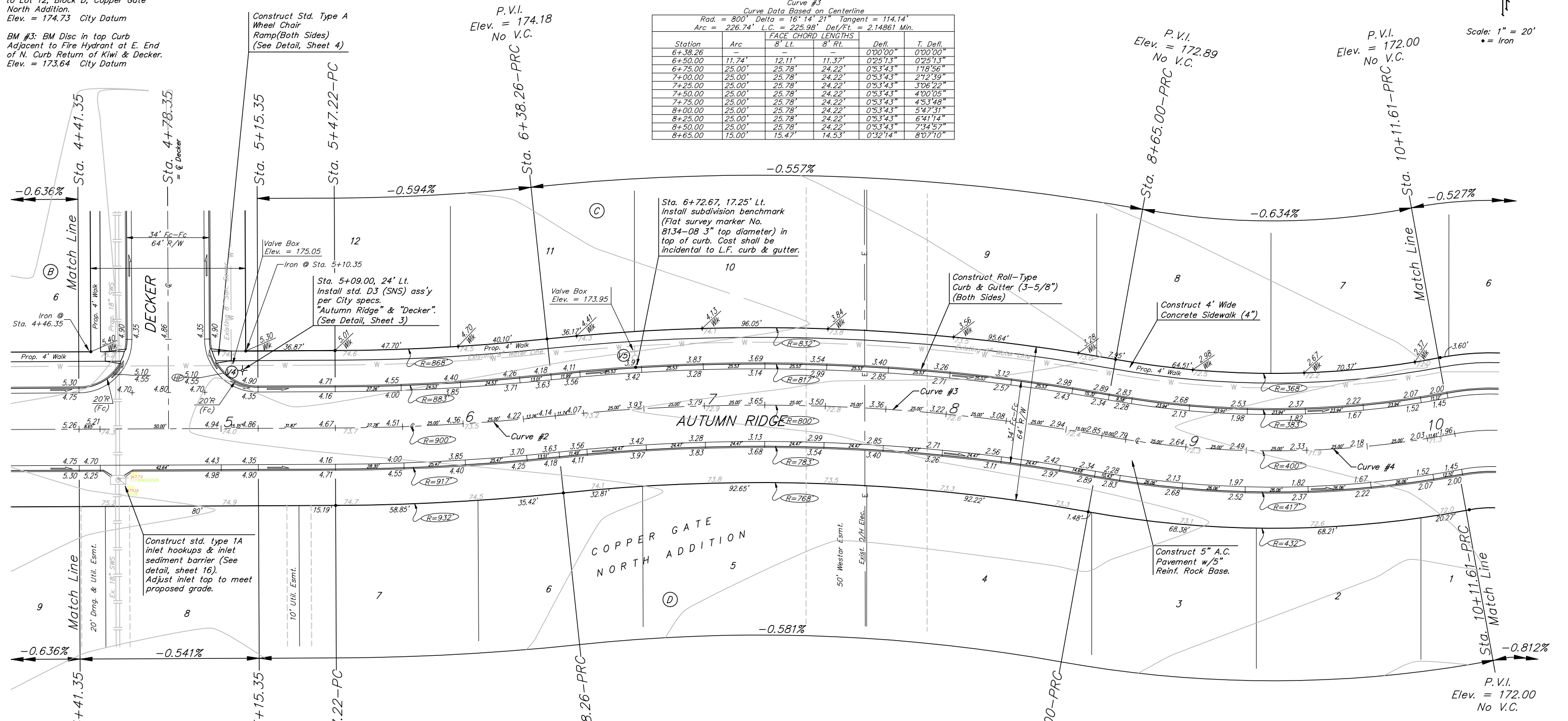
Station	Arc	FACE CHORD LENGTHS		Defl.	T. Defl.
		8' Lt.	8' Rt.		
5+47.22	-	-	-	0°00'00"	0°00'00"
5+50.00	2.78'	2.70'	2.86'	0°05'18"	0°05'18"
5+75.00	25.00'	24.30'	25.69'	0°47'45"	0°53'03"
6+00.00	25.00'	24.30'	25.69'	0°47'45"	1°40'48"
6+25.00	25.00'	24.30'	25.69'	0°47'45"	2°28'33"
6+38.26	13.26'	12.89'	13.63'	0°25'19"	2°53'52"

Curve #3  
 Curve Data Based on Centerline  
 Rad. = 800' Delta = 16° 14' 21" Tangent = 114.14'  
 Arc = 226.74' L.C. = 225.98' Def/Ft. = 2.14861 Min.

Station	Arc	FACE CHORD LENGTHS		Defl.	T. Defl.
		8' Lt.	8' Rt.		
6+38.26	-	-	-	0°00'00"	0°00'00"
6+50.00	11.74'	12.11'	11.37'	0°25'13"	0°25'13"
6+75.00	25.00'	25.78'	24.22'	0°53'43"	1°18'56"
7+00.00	25.00'	25.78'	24.22'	0°53'43"	2°12'39"
7+25.00	25.00'	25.78'	24.22'	0°53'43"	3°06'22"
7+50.00	25.00'	25.78'	24.22'	0°53'43"	4°00'05"
7+75.00	25.00'	25.78'	24.22'	0°53'43"	4°53'48"
8+00.00	25.00'	25.78'	24.22'	0°53'43"	5°47'31"
8+25.00	25.00'	25.78'	24.22'	0°53'43"	6°41'14"
8+50.00	25.00'	25.78'	24.22'	0°53'43"	7°34'57"
8+65.00	15.00'	15.47'	14.53'	0°32'14"	8°07'10"

Curve #4  
 Curve Data Based on Centerline  
 Rad. = 400' Delta = 20° 59' 59" Tangent = 74.13'  
 Arc = 146.61' L.C. = 145.79' Def/Ft. = 4.29706 Min.

Station	Arc	FACE CHORD LENGTHS		Defl.	T. Defl.
		8' Lt.	8' Rt.		
8+65.00	-	-	-	0°00'00"	0°00'00"
8+75.00	10.00'	9.37'	10.62'	0°42'58"	0°42'58"
9+00.00	25.00'	23.43'	26.56'	1°47'25"	2°30'24"
9+25.00	25.00'	23.43'	26.56'	1°47'25"	4°17'49"
9+50.00	25.00'	23.43'	26.56'	1°47'25"	6°05'15"
9+75.00	25.00'	23.43'	26.56'	1°47'25"	7°52'40"
10+00.00	25.00'	23.43'	26.56'	1°47'25"	9°40'06"
10+11.61	11.61'	10.88'	12.33'	0°49'53"	10°29'59"



P.V.I.  
 Elev. = 175.30  
 No V.C.

P.V.I.  
 Elev. = 174.90  
 No V.C.

P.V.I.  
 Elev. = 174.18  
 No V.C.

P.V.I.  
 Elev. = 172.89  
 No V.C.

P.V.I.  
 Elev. = 172.00  
 No V.C.

P.V.I.  
 Elev. = 172.00  
 No V.C.

Roll type curb & gutter to be constructed on the pavement on this sheet. Top of curb elevation are given for full height curb.

**Baughman** Engineering | Surveying | Planning | Landscape Architecture

Copper Gate North Addition - Phase II  
**AUTUMN RIDGE**  
 STA. 4+41.35 TO STA. 10+11.61

PROJECT NUMBER: 472-84105  
 DESIGN: NEW/JAK  
 DRAWN: TMS

APPROVED: [Signature]  
 DATE: 9/06/06

SCALE: Noted  
 SHEET: **6 OF 23**

Copper Gate North/Phase 2/Sheet 06-04-E526