

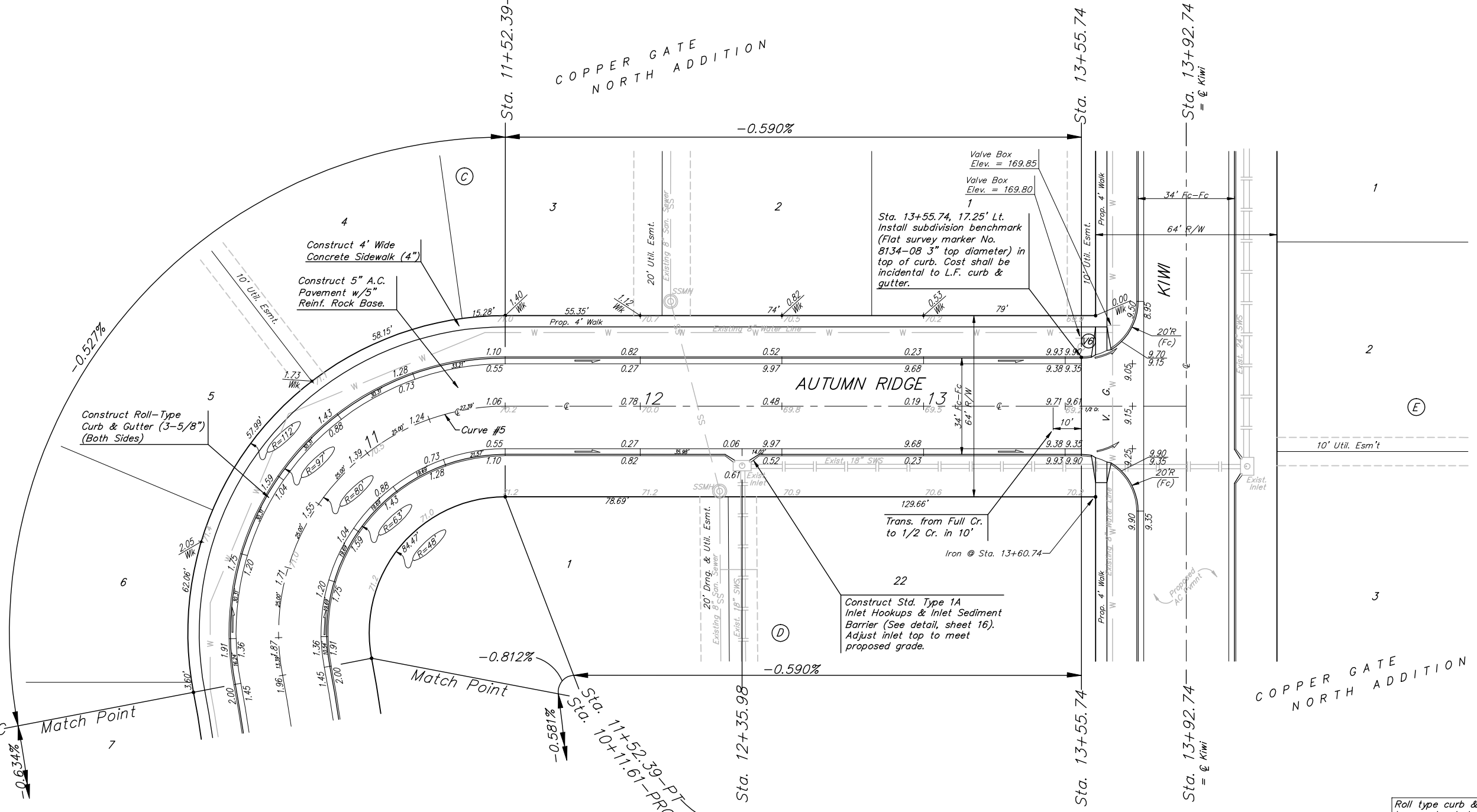
BENCHMARKS:
 BM #1: C.O.W. disc at SW corner of intersection.
 30.00'± S. of CL of 13th St. N.
 35.00'± W. of CL of 135th St. W.
 Elev. = 168.25 City Datum

BM #2: "□" Cut in Top of Curb
 10' South of end of Existing Pavement, East Curb adjacent to Lot 12, Block D, Copper Gate North Addition.
 Elev. = 174.73 City Datum

BM #3: BM Disc in top Curb Adjacent to Fire Hydrant at E. End of N. Curb Return of Kiwi & Decker.
 Elev. = 173.64 City Datum

Scale: 1" = 20'
 • = Iron

P.V.I.
 Elev. = 171.10
 No V.C.



P.V.I.
 Elev. = 172.00
 No V.C.

P.V.I.
 Elev. = 172.00
 No V.C.

P.V.I.
 Elev. = 171.10
 No V.C.

Curve #5
 Curve Data Based on Centerline
 Rad. = 80' Delta = 100° 49' 24" Tangent = 96.74'
 Arc = 140.78' L.C. = 123.30' Def./Ft. = 21.48530 Min.

Station	Arc	FACE CHORD LENGTHS		Defl.	T. Defl.
		8' Lt.	8' Rt.		
10+11.61	-	-	-	0'00'00"	0'00'00"
10+25.00	13.39'	17.55'	9.19'	4'47'41"	4'47'41"
10+50.00	25.00'	32.68'	17.12'	8'57'08"	13'44'49"
10+75.00	25.00'	32.68'	17.12'	8'57'08"	22'41'57"
11+00.00	25.00'	32.68'	17.12'	8'57'08"	31'39'05"
11+25.00	25.00'	32.68'	17.12'	8'57'08"	40'36'13"
11+50.00	25.00'	32.68'	17.12'	8'57'08"	49'33'21"
11+52.39	2.39'	3.14'	1.64'	0'51'21"	50'24'42"

Roll type curb & gutter to be constructed on the pavement on this sheet.
 Top of curb elevation are given for full height curb.

Baughman Copper Gate North Addition - Phase II
AUTUMN RIDGE
 STA. 10+11.61 TO STA. 13+55.74

Baughman Company, P.A. 315 Hill St. W. 2nd Fl. P.O. Box 10000
 ENGINEERING | SURVEYING | PLANNING | LANDSCAPE ARCHITECTURE

PROJECT NUMBER 472-84105	DESIGN NEW/JAK	DRAWN TMS
REVISIONS:	APPROVED	DATE 9/06/06
	SCALE Noted	
	SHEET	

7 OF 23

Copper Gate North/Phase 2/Sec 06-04-E526