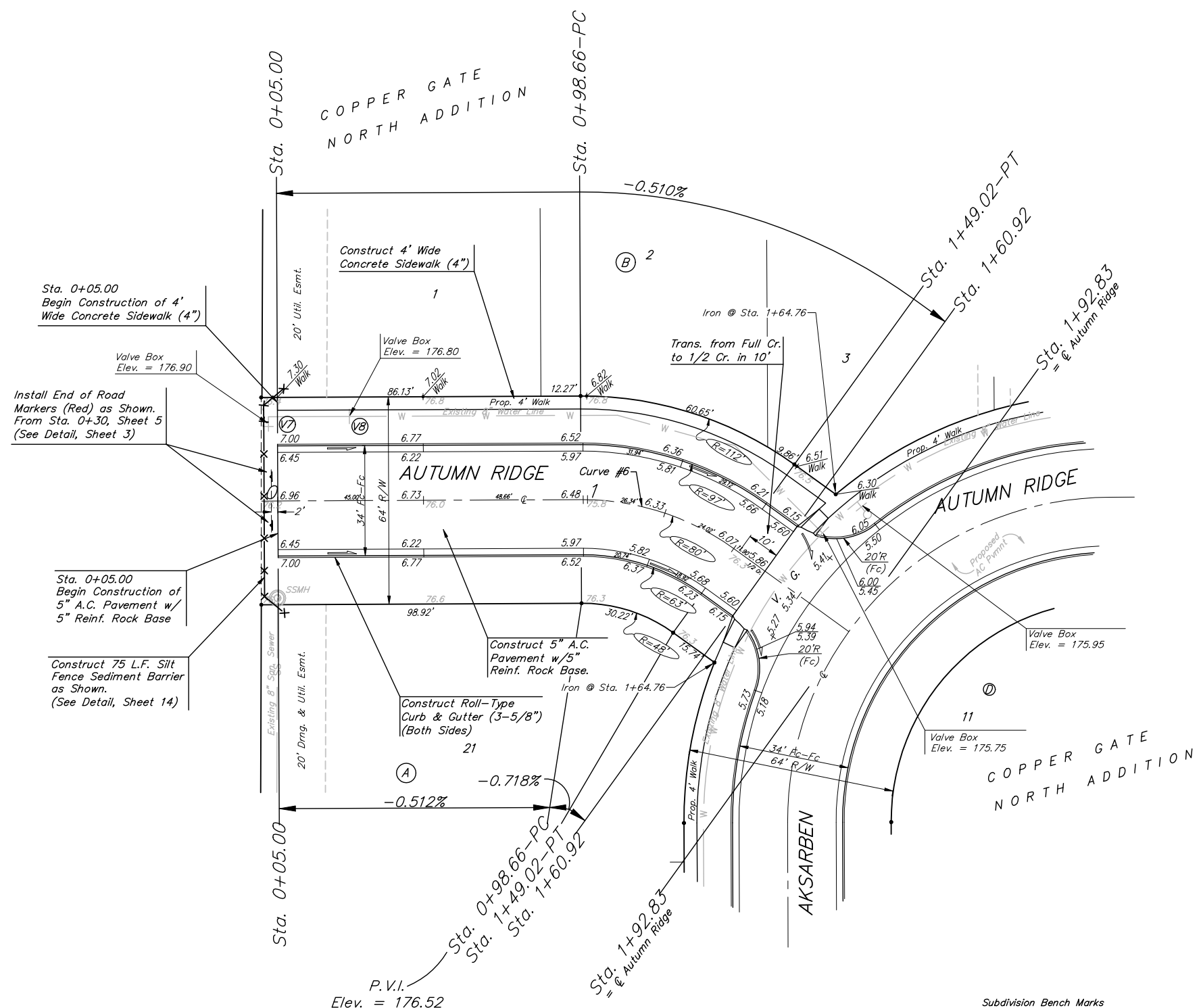
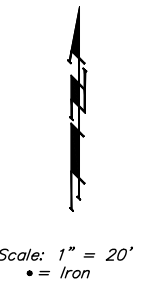


**BENCHMARKS:**  
 BM #1: C.O.W. disc at SW corner of intersection.  
 30.00'± S. of CL of 13th St. N.  
 35.00'± W. of CL of 135th St. W.  
 Elev. = 168.25 City Datum

BM #2: "□" Cut in Top of Curb  
 10' South of end of Existing Pavement, East Curb adjacent to Lot 12, Block D, Copper Gate North Addition.  
 Elev. = 174.73 City Datum

BM #3: BM Disc in top Curb  
 Adjacent to Fire Hydrant at E. End of N. Curb Return of Kiwi & Decker.  
 Elev. = 173.64 City Datum



Curve #6  
 Curve Data Based on Centerline  
 Rad. = 80' Delta = 36°04'05" Tangent = 26.05'  
 Arc = 50.36' L.C. = 49.53' Def/Ft. = 21.48613 Min.

Station	Arc	FACE CHORD LENGTHS		Defl.	T. Defl.
		8' Lt.	8' Rt.		
0+98.66	-	-	-	0'00'00"	0'00'00"
1+00.00	1.34'	1.76'	0.92'	0'28'47"	0'28'47"
1+25.00	25.00'	32.68'	17.12'	8'57'09"	9'25'56"
1+49.02	24.02'	31.41'	16.45'	8'36'06"	18'02'02"

P.V.I.  
 Elev. = 176.52  
 No V.C.

Street & Station	Location Description	Elevation
Autumn Ridge 1+95.25, 17.25' Lt.	Adjacent to Fire Hydrant at E. End of E. Curb Return of Aksarben & Autumn Ridge.	
Autumn Ridge 6+72.67, 17.25' Lt.	Adjacent to Fire Hydrant near common lot corner of Lots 10-11, Block C.	
Autumn Ridge 13+55.74, 17.25' Lt.	Adjacent to Fire Hydrant at N. End of E. Curb Return of Autumn Ridge & Kiwi.	

Roll type curb & gutter to be constructed on the pavement on this sheet.  
 Top of curb elevation are given for full height curb.

		Copper Gate North Addition - Phase II	
		<b>AUTUMN RIDGE</b> STA. 0+05.00 TO STA. 1+92.83	
<small>Baughman Company, P.A. 315 8th St. W. Minn. 55 67211 P 3162627271 F 3162620149          ENGINEERING   SURVEYING   PLANNING   LANDSCAPE ARCHITECTURE</small>			
PROJECT NUMBER 472-84105	DESIGN NEW/JAK	DRAWN TMS	
REVISIONS:	APPROVED	DATE 9/06/06	
	SCALE Noted	SHEET	
			<b>8 OF 23</b>
Copper Gate North/Phase 2/Sec4		06-04-E526	