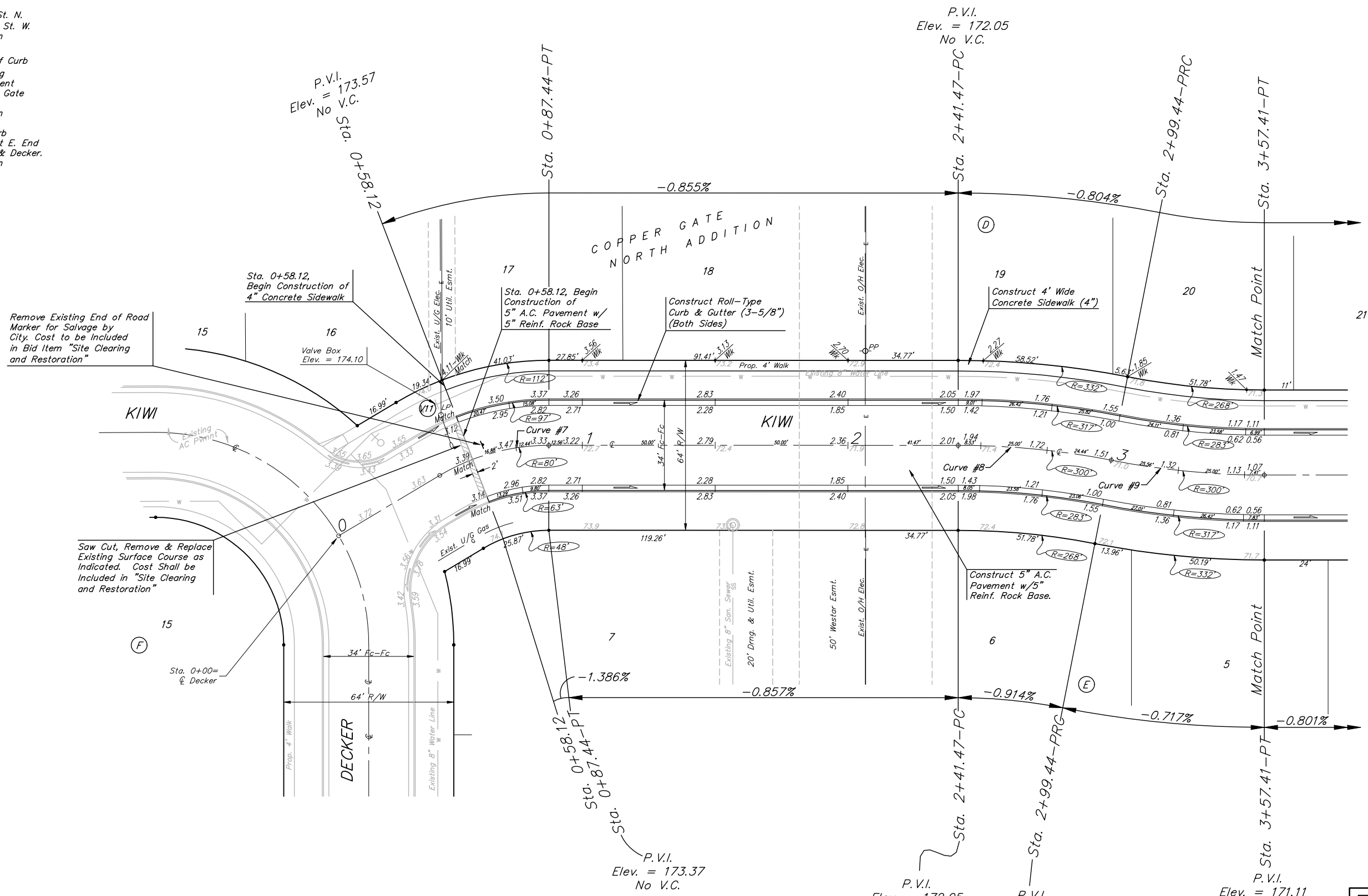


BENCHMARKS:
 BM #1: C.O.W. disc at SW corner of intersection.
 30.00'± S. of CL of 13th St. N.
 35.00'± W. of CL of 135th St. W.
 Elev. = 168.25 City Datum

BM #2: "□" Cut in Top of Curb
 10' South of end of Existing Pavement, East Curb adjacent to Lot 12, Block D, Copper Gate North Addition.
 Elev. = 174.73 City Datum

BM #3: BM Disc in top Curb Adjacent to Fire Hydrant at E. End of N. Curb Return of Kiwi & Decker.
 Elev. = 173.64 City Datum

Scale: 1" = 20'
 • = Iron



Remove Existing End of Road Marker for Salvage by City. Cost to be Included in Bid Item "Site Clearing and Restoration"

Saw Cut, Remove & Replace Existing Surface Course as Indicated. Cost Shall be Included in "Site Clearing and Restoration"

Curve #7
 Curve Data Based on Centerline
 Rad. = 80' Delta = 30° 52' 55" Tangent = 22.10'
 Arc = 43.12' L.C. = 42.60' Def/Ft. = 21.48558 Min.

| Station | Arc | FACE CHORD LENGTHS | | Defl. | T. Defl. |
|---------|--------|--------------------|--------|----------|-----------|
| | | 8' Lt. | 8' Rt. | | |
| 0+44.32 | - | - | - | 0'00"00" | 0'00"00" |
| 0+50.00 | 5.68' | 7.45' | 3.90' | 2'02'02" | 2'02'02" |
| 0+58.12 | 8.12' | 10.65' | 5.58' | 2'54'28" | 4'56'30" |
| 0+75.00 | 16.88' | 22.11' | 11.58' | 6'02'40" | 10'59'10" |
| 0+87.44 | 12.44' | 16.31' | 8.54' | 4'27'17" | 15'26'27" |

Curve #8
 Curve Data Based on Centerline
 Rad. = 300' Delta = 11°04'15" Tangent = 29.07'
 Arc = 57.97' L.C. = 57.88' Def/Ft. = 5.72926 Min.

| Station | Arc | FACE CHORD LENGTHS | | Defl. | T. Defl. |
|---------|--------|--------------------|--------|----------|----------|
| | | 8' Lt. | 8' Rt. | | |
| 2+41.47 | - | - | - | 0'00"00" | 0'00"00" |
| 2+50.00 | 8.53' | 9.24' | 7.82' | 0'48'52" | 0'48'52" |
| 2+75.00 | 25.00' | 27.07' | 22.91' | 2'23'14" | 3'12'06" |
| 2+99.44 | 24.44' | 26.47' | 22.40' | 2'20'01" | 5'32'07" |

Curve #9
 Curve Data Based on Centerline
 Rad. = 300' Delta = 11°04'15" Tangent = 29.07'
 Arc = 57.97' L.C. = 57.88' Def/Ft. = 5.72926 Min.

| Station | Arc | FACE CHORD LENGTHS | | Defl. | T. Defl. |
|---------|--------|--------------------|--------|----------|----------|
| | | 8' Lt. | 8' Rt. | | |
| 2+99.44 | - | - | - | 0'00"00" | 0'00"00" |
| 3+25.00 | 25.56' | 23.42' | 27.68' | 2'26'26" | 2'26'26" |
| 3+50.00 | 25.00' | 22.91' | 27.07' | 2'23'14" | 4'49'40" |
| 3+57.41 | 7.41' | 6.79' | 8.03' | 0'42'27" | 5'32'07" |

Roll type curb & gutter to be constructed on the pavement on this sheet.
 Top of curb elevation are given for full height curb.

Baughman Engineering | Surveying | Planning | Landscape Architecture
KIWI
 Copper Gate North Addition - Phase II
 STA. 0+58.12 TO STA. 3+57.41

PROJECT NUMBER: 472-84105
 DESIGN: NEW/JAK
 DRAWN: TMS
 APPROVED: [Signature]
 DATE: 9/06/06
 SCALE: Noted
 SHEET: 10 OF 23

Copper Gate North/Phase 2/Std
 06-04-E526