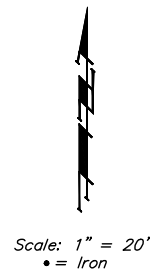
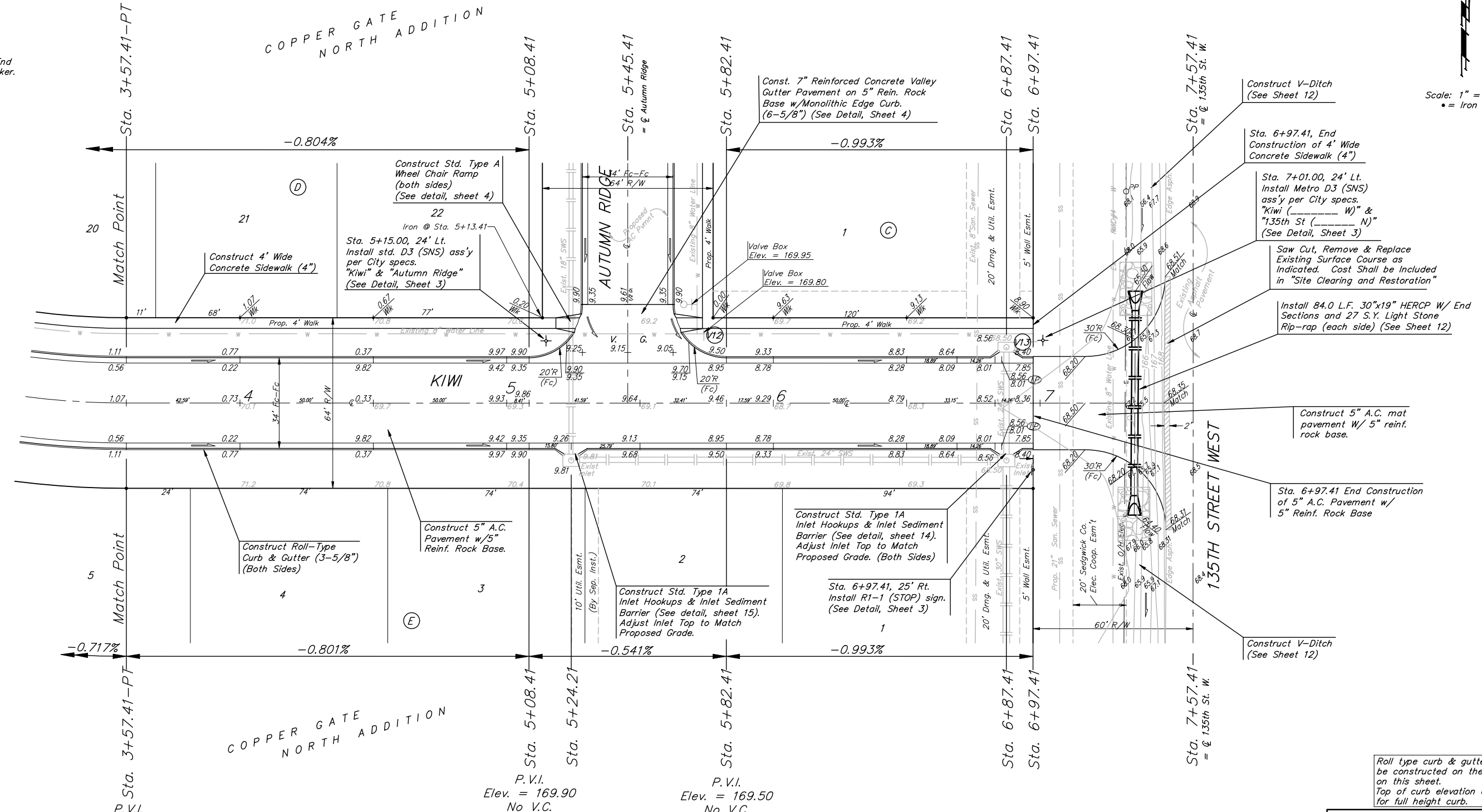


**BENCHMARKS:**  
 BM #1: C.O.W. disc at SW corner of intersection.  
 30.00'± S. of CL of 13th St. N.  
 35.00'± W. of CL of 135th St. W.  
 Elev. = 168.25 City Datum

BM #2: "□" Cut in Top of Curb  
 10' South of end of Existing Pavement, East Curb adjacent to Lot 12, Block D, Copper Gate North Addition.  
 Elev. = 174.73 City Datum

BM #3: BM Disc in top Curb Adjacent to Fire Hydrant at E. End of N. Curb Return of Kiwi & Decker.  
 Elev. = 173.64 City Datum



P.V.I.  
 Elev. = 171.11  
 No V.C.

P.V.I.  
 Elev. = 169.90  
 No V.C.

P.V.I.  
 Elev. = 169.50  
 No V.C.

Roll type curb & gutter to be constructed on the pavement on this sheet.  
 Top of curb elevation are given for full height curb.

<b>Baughman</b>		<b>KIWI</b>	
Copper Gate North Addition - Phase II			
STA. 3+57.41 TO STA. 7+57.41			
Baughman Company, P.A. 315 8th St. W. Minn. 55 6711 P 3162627771 F 3162620149			
PROJECT NUMBER 472-84105		DESIGN NBW/JAK	DRAWN TMS
REVISIONS:		APPROVED	DATE 9/06/06
		SCALE Noted	SHEET <b>11 OF 23</b>
Copper Gate North/Phase 2/Set7		06-04-E526	