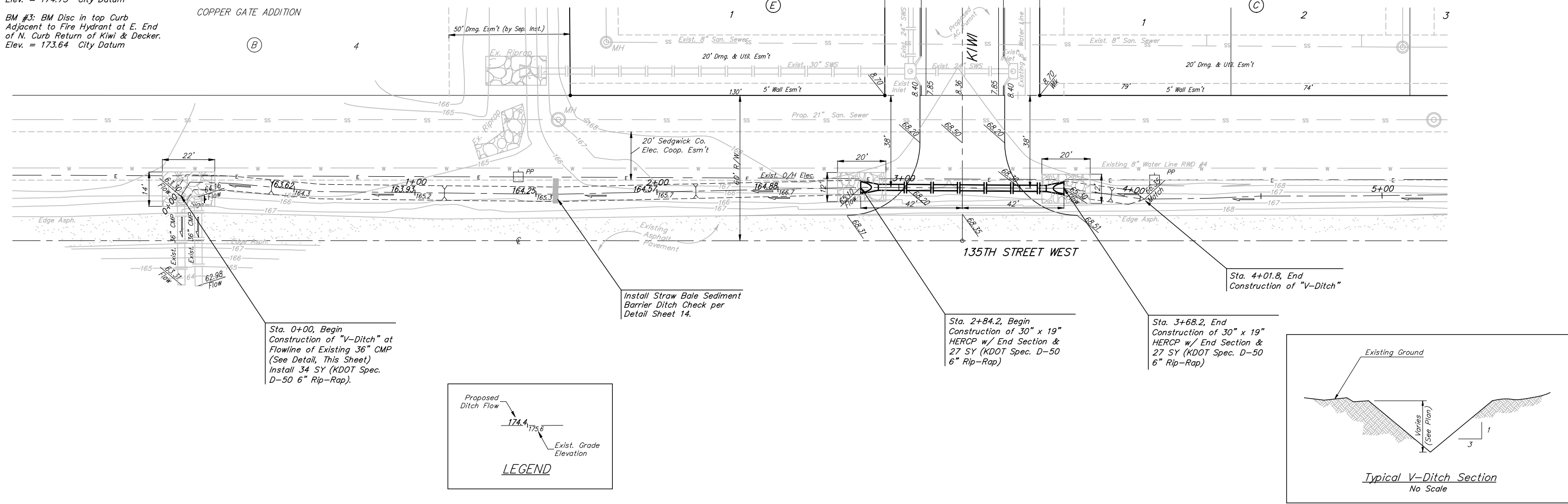


**BENCHMARKS:**  
 BM #1: C.O.W. disc at SW corner of intersection.  
 30.00'± S. of CL of 13th St. N.  
 35.00'± W. of CL of 135th St. W.  
 Elev. = 168.25 City Datum

BM #2: "□" Cut in Top of Curb  
 10' South of end of Existing  
 Pavement, East Curb adjacent  
 to Lot 12, Block D, Copper Gate  
 North Addition.  
 Elev. = 174.73 City Datum

BM #3: BM Disc in top Curb  
 Adjacent to Fire Hydrant at E. End  
 of N. Curb Return of Kiwi & Decker.  
 Elev. = 173.64 City Datum

SCALE:  
 1" = 20' HORIZONTAL  
 1" = 5' VERTICAL  
 • = IRON



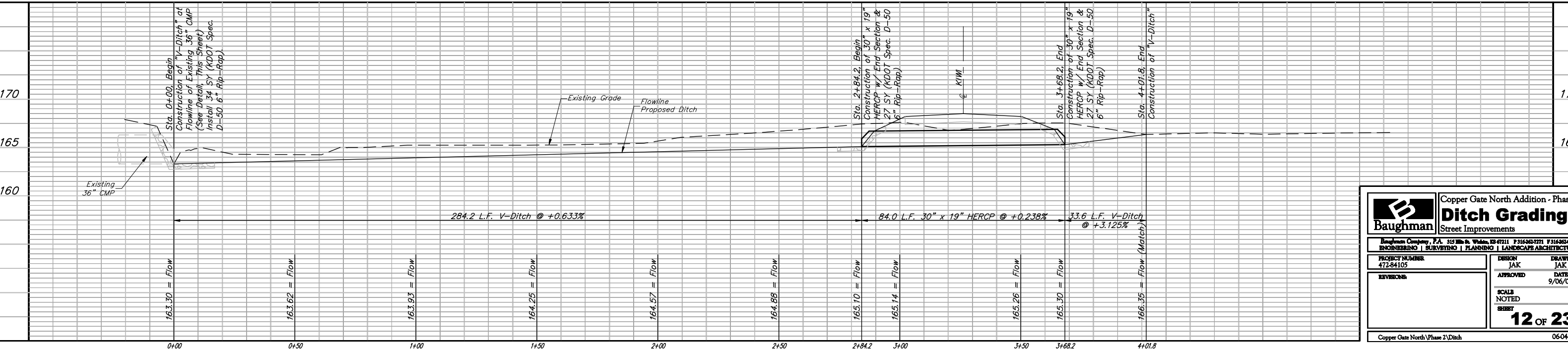
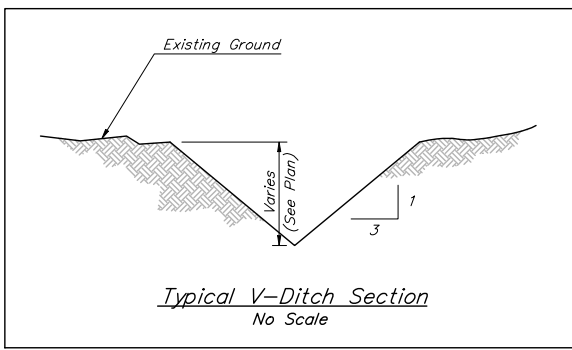
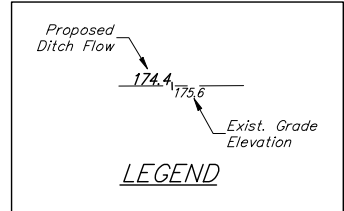
Sta. 0+00, Begin Construction of "V-Ditch" at Flowline of Existing 36" CMP (See Detail, This Sheet) Install 34 SY (KDOT Spec. D-50 6" Rip-Rap).

Install Straw Bale Sediment Barrier Ditch Check per Detail Sheet 14.

Sta. 2+84.2, Begin Construction of 30" x 19" HERCP w/ End Section & 27 SY (KDOT Spec. D-50 6" Rip-Rap)

Sta. 3+68.2, End Construction of 30" x 19" HERCP w/ End Section & 27 SY (KDOT Spec. D-50 6" Rip-Rap)

Sta. 4+01.8, End Construction of "V-Ditch"



<b>Baughman</b>		Copper Gate North Addition - Phase II	
<b>Ditch Grading</b>		Street Improvements	
Baughman Company, P.A. 315 Mills St. White, NJ 07111 F316362771 F316362016			
ENGINEERING   SURVEYING   PLANNING   LANDSCAPE ARCHITECTURE			
PROJECT NUMBER 472-84105	DESIGN JAK	DRAWN JAK	DATE 9/06/06
REVISIONS	APPROVED	SCALE NOTED	SHEET 12 OF 23
Copper Gate North Phase 2 Ditch			06-04-E526