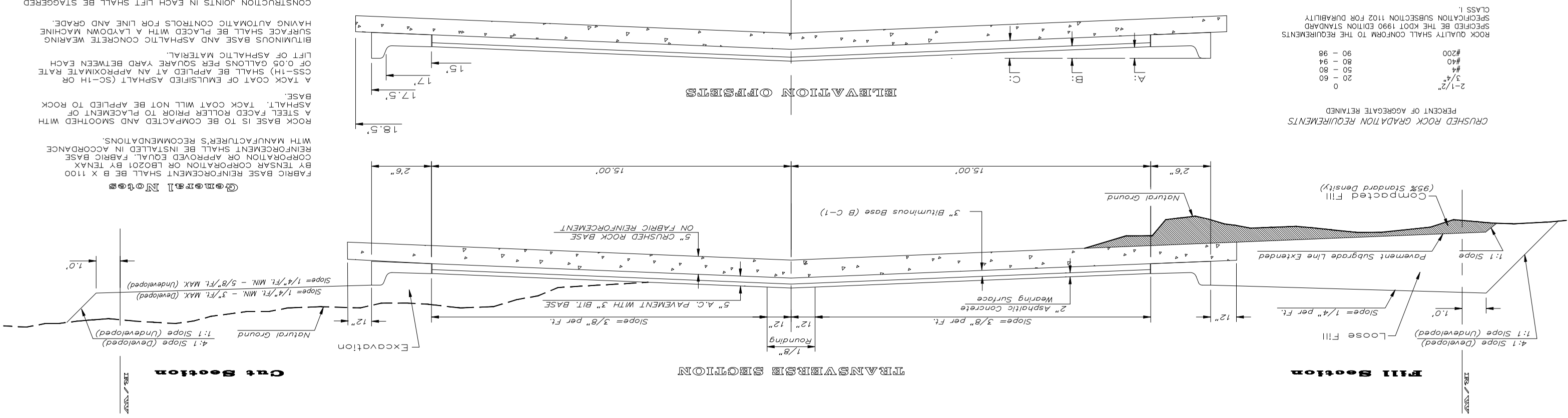


TYPICAL 35' B-B PAVEMENT DETAILS



Fill Section

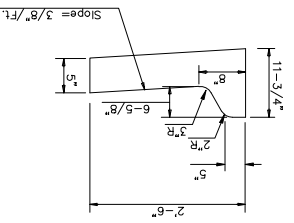
Cut Section

CRUSHED ROCK GRADATION REQUIREMENTS

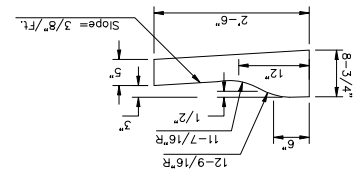
2-1/2"	20
3/4"	50 - 60
#4	80 - 94
#40	90 - 98
#200	0

PERCENT OF AGGREGATE RETAINED
 ROCK QUALITY SHALL CONFORM TO THE REQUIREMENTS SPECIFIED BE THE KDOT 1990 EDITION STANDARD

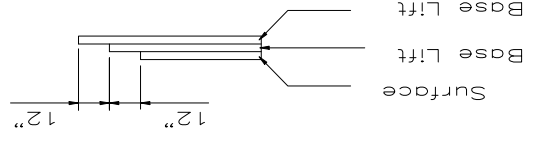
COMBINED CURB & GUTTER



COMBINED ROLL TYPE CURB & GUTTER



TRANSVERSE CONSTRUCTION JOINTS



Transverse construction joints shall be constructed in existing flexible base pavement as shown by the detail. Flexible base pavements at locations where pavement joints exist shall be included in the bid price for Square Yards of 5" ASPHALTIC CONCRETE (3" BITUMINOUS BASE).

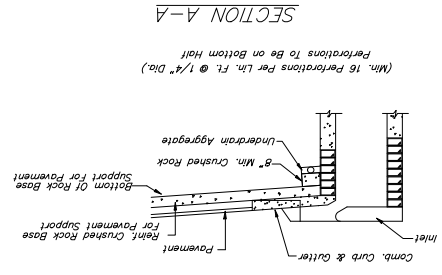
DISTANCE FROM CENTERLINE (L.T. & R.T.)	A: Top of Curbs to Top of Surface Lift	B: Top of Curbs to Top of Upper Base Lift	C: Top of Curbs to Top of C. R. Subgrade
0'	0.04	0.21	0.46
2'	0.08	0.25	0.50
4'	0.14	0.31	0.56
6'	0.21	0.37	0.63
8.5'	0.29	0.45	0.71
10'	0.33	0.50	0.75
12'	0.39	0.56	0.81
14'	0.46	0.62	0.88
15'	0.49	0.65	0.91
17'	0.55	0.71	0.97
18.5'	0.65	0.81	1.01

* UNDERDRAIN AGGREGATE
 Percent of Aggregate Retained

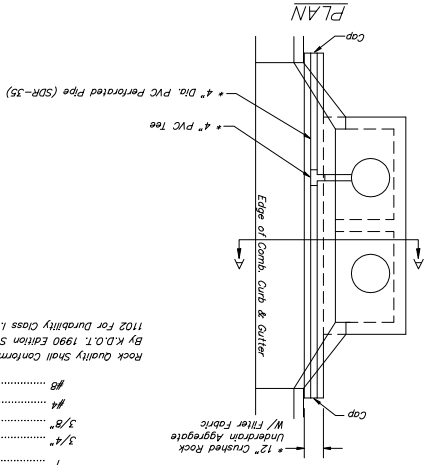
1"	0
3/8"	0 to 10
3/8"	45 to 80
#4	90 to 100
#8	95 to 100

Rock Quality Shall Conform to the Requirements Specified by K.D.O.T. 1990 Edition Standard Specification Subsection 1102 for Durability Class I.

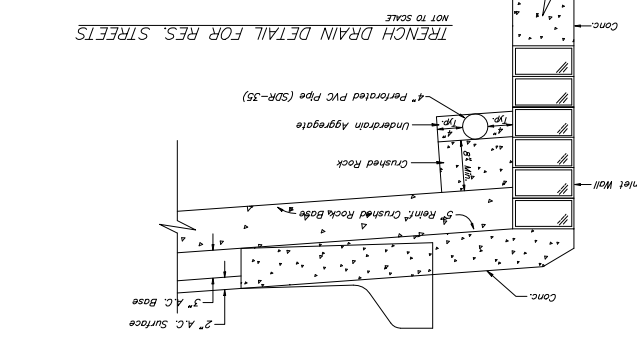
NOTE: Place 4" PVC Perforated Pipe at all drainage inlet locations.
 Cost of Underdrain System to be Incidental to the Reinforced Crushed Rock Subgrade.
 Inlet type May Vary from that Shown.



PAVEMENT UNDERDRAIN DETAIL



Baughman
 City of Wichita, Kansas
 5 inch Residential Asphaltic Concrete Pavement w/Crushed Rock Base on Fabric Reinf.
 PROJECT NUMBER: 4724246
 DESIGN: C.O.W.
 DATE: 08/06
 SCALE: None
 SHEET: 2 OF 32



CONSTRUCTION JOINTS IN EACH LIFT SHALL BE STAGGERED IN PRECEDING LIFTS AND PLACED SO THAT A JOINT WILL BE CONSTRUCTED ON THE CENTERLINE OF THE TOP LIFT. THE ASPHALTIC CONCRETE PAVEMENT BETWEEN THE COMBINED CURB AND GUTTER SHALL BE PAID AS SQUARE YARDS OF 5" ASPHALTIC CONCRETE (3" BITUMINOUS BASE.)

General Notes

FABRIC BASE REINFORCEMENT SHALL BE B X 1100 BY TENSAR CORPORATION OR LB0201 BY TENAX CORPORATION OR APPROVED EQUAL. FABRIC BASE REINFORCEMENT SHALL BE INSTALLED IN ACCORDANCE WITH MANUFACTURER'S RECOMMENDATIONS. ROCK BASE IS TO BE COMPACTED AND SMOOTHED WITH A STEEL FACED ROLLER PRIOR TO PLACEMENT OF ASPHALT. TACK COAT WILL NOT BE APPLIED TO ROCK BASE. A TACK COAT OF EMULSIFIED ASPHALT (SC-1H OR CSS-1H) SHALL BE APPLIED AT AN APPROXIMATE RATE OF 0.05 GALLONS PER SQUARE YARD BETWEEN EACH LIFT OF ASPHALTIC MATERIAL. BITUMINOUS BASE AND ASPHALTIC CONCRETE WEARING SURFACE SHALL BE PLACED WITH A LAYDOWN MACHINE HAVING AUTOMATIC CONTROLS FOR LINE AND GRADE. A MINIMUM DISTANCE OF ONE (1) FOOT FROM JOINTS IN PRECEDING LIFTS AND PLACED SO THAT A JOINT WILL BE CONSTRUCTED ON THE CENTERLINE OF THE TOP LIFT.