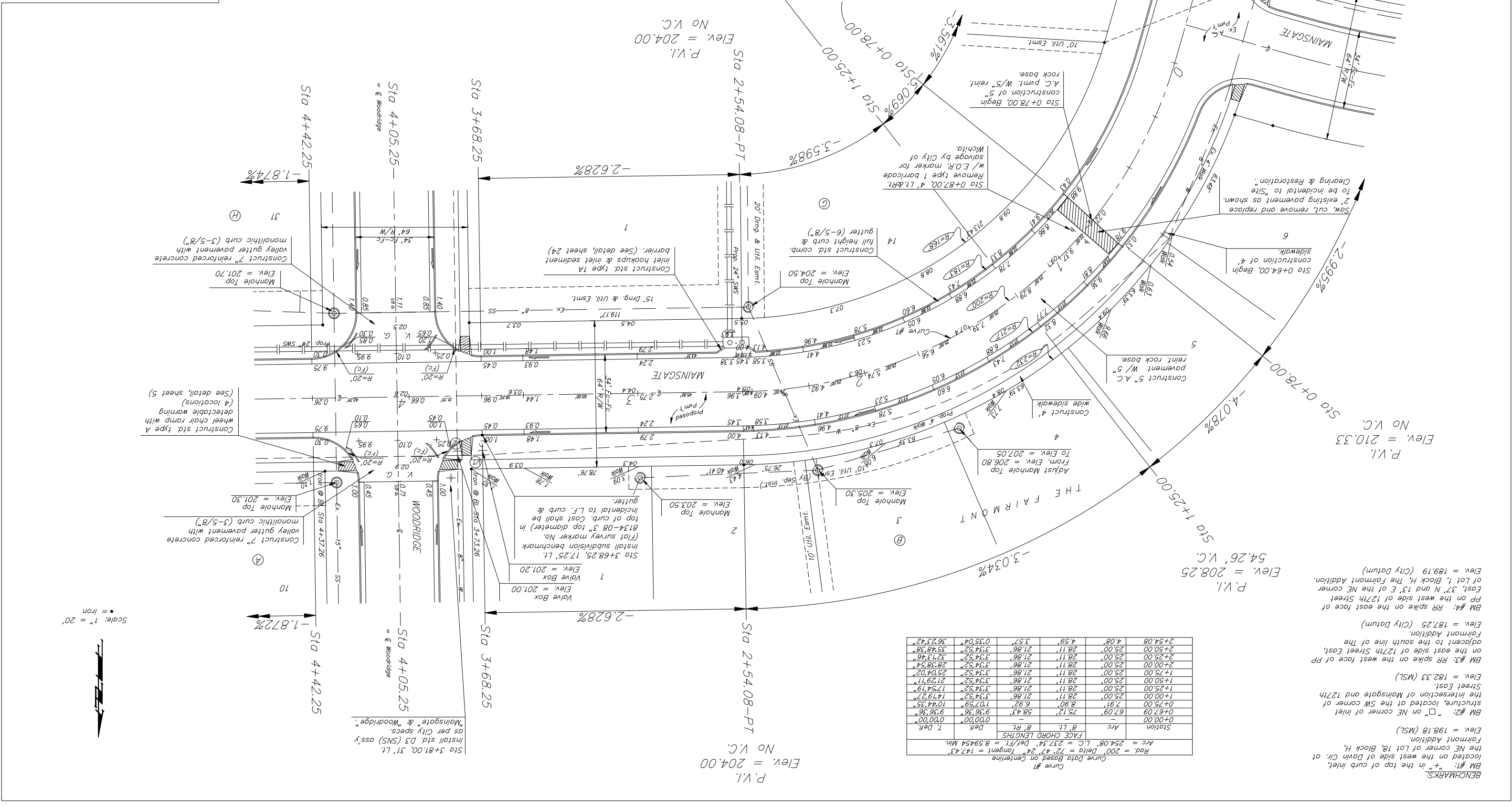


THE FAIRMONT - PHASE IV
MAINGATE
 Baughman Company, P.A. 315 E. 9th St., Wichita, KS 67202
 ENGINEERING | SURVEYING | PLANNING | LANDSCAPE ARCHITECTURE

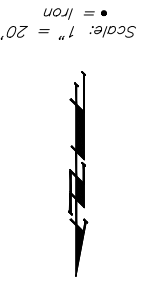
DESIGN: TMS
 ATTD: TMS
 APPROVED: 08/06
 SCALE: Noted
 SHEET: 7 OF 32
 06-01-B470



Curve Data Based on Centerline
 Rod = 200' Delta = 72' 47" 24' tangent = 147.43'
 Arc = 254.08' L.C. = 237.34' Del/Ft = 8.59454 Mn.

Station	Arc	8' Lt.	8' Rt.	I. Del.
0+00.00	67.09	75.12	58.43	9.3636
0+75.00	8.90	7.91	6.92	10.4735
1+00.00	25.00	28.11	21.86	14.1927
1+25.00	25.00	28.11	21.86	17.8419
1+50.00	25.00	28.11	21.86	21.4911
1+75.00	25.00	28.11	21.86	25.1402
2+00.00	25.00	28.11	21.86	28.7894
2+25.00	25.00	28.11	21.86	32.4386
2+50.00	25.00	28.11	21.86	36.0878
2+75.00	25.00	28.11	21.86	39.7370
3+00.00	25.00	28.11	21.86	43.3862
3+25.00	25.00	28.11	21.86	47.0354
3+50.00	25.00	28.11	21.86	50.6846
3+75.00	25.00	28.11	21.86	54.3338
4+00.00	25.00	28.11	21.86	57.9830
4+25.00	25.00	28.11	21.86	61.6322
4+50.00	25.00	28.11	21.86	65.2814
4+75.00	25.00	28.11	21.86	68.9306
5+00.00	25.00	28.11	21.86	72.5798
5+25.00	25.00	28.11	21.86	76.2290
5+50.00	25.00	28.11	21.86	79.8782
5+75.00	25.00	28.11	21.86	83.5274
6+00.00	25.00	28.11	21.86	87.1766
6+25.00	25.00	28.11	21.86	90.8258
6+50.00	25.00	28.11	21.86	94.4750
6+75.00	25.00	28.11	21.86	98.1242
7+00.00	25.00	28.11	21.86	101.7734
7+25.00	25.00	28.11	21.86	105.4226
7+50.00	25.00	28.11	21.86	109.0718
7+75.00	25.00	28.11	21.86	112.7210
8+00.00	25.00	28.11	21.86	116.3702
8+25.00	25.00	28.11	21.86	120.0194
8+50.00	25.00	28.11	21.86	123.6686
8+75.00	25.00	28.11	21.86	127.3178
9+00.00	25.00	28.11	21.86	130.9670
9+25.00	25.00	28.11	21.86	134.6162
9+50.00	25.00	28.11	21.86	138.2654
9+75.00	25.00	28.11	21.86	141.9146
10+00.00	25.00	28.11	21.86	145.5638
10+25.00	25.00	28.11	21.86	149.2130
10+50.00	25.00	28.11	21.86	152.8622
10+75.00	25.00	28.11	21.86	156.5114
11+00.00	25.00	28.11	21.86	160.1606
11+25.00	25.00	28.11	21.86	163.8098
11+50.00	25.00	28.11	21.86	167.4590
11+75.00	25.00	28.11	21.86	171.1082
12+00.00	25.00	28.11	21.86	174.7574
12+25.00	25.00	28.11	21.86	178.4066
12+50.00	25.00	28.11	21.86	182.0558
12+75.00	25.00	28.11	21.86	185.7050
13+00.00	25.00	28.11	21.86	189.3542

BENCHMARKS:
 BM #1: "+" in the top of curb inlet, located on the west side of Dawn Cir. at the NE corner of Lot 18, Block H, Fairmont Addition.
 Elev. = 198.18 (MSL)
 BM #2: "□" on NE corner of inlet structure, located at the SW corner of the intersection of Maingate and 127th Street East.
 Elev. = 182.33 (MSL)
 Street East.
 BM #3: RR spike on the west face of PP on the east side of 127th Street East, adjacent to the south line of The Fairmont Addition.
 Elev. = 187.25 (City Datum)
 BM #4: RR spike on the east face of PP on the west side of 127th Street East, 37' N and 13' E of the NE corner of Lot 1, Block H, The Fairmont Addition.
 Elev. = 189.19 (City Datum)



Construct std. type A wheel chair ramp with detectable warning (4 locations) (See detail, sheet 5)

Construct 7" reinforced concrete valley gutter pavement with monolithic curb (3-5/8")

Manhole Top Elev. = 201.70

Construct 7" reinforced concrete valley gutter pavement with monolithic curb (3-5/8")

Construct std. type 1A inlet hookups & inlet sediment barrier. (See detail, sheet 24)

14 full height curb & gutter (6-5/8")

Manhole Top Elev. = 204.50

Remove type 1 barricade w/ E.O.R. marker for salvage by City of Wichita

Construct std. comb. A.C. pmt. w/5" reinf. rock base

Construct 5" A.C. pavement w/5" reinf. rock base

Construct 4" wide sidewalk

Construct 4" sidewalk

Construct 4" sidewalk

Construct 4" sidewalk

Construct 4" sidewalk

Construct std. type A wheel chair ramp with detectable warning (4 locations) (See detail, sheet 5)

Construct 7" reinforced concrete valley gutter pavement with monolithic curb (3-5/8")

Manhole Top Elev. = 201.70

Construct 7" reinforced concrete valley gutter pavement with monolithic curb (3-5/8")

Construct std. type 1A inlet hookups & inlet sediment barrier. (See detail, sheet 24)

14 full height curb & gutter (6-5/8")

Manhole Top Elev. = 204.50

Remove type 1 barricade w/ E.O.R. marker for salvage by City of Wichita

Construct std. comb. A.C. pmt. w/5" reinf. rock base

Construct 5" A.C. pavement w/5" reinf. rock base

Construct 4" wide sidewalk

Construct 4" sidewalk

Construct 4" sidewalk

Construct 4" sidewalk

Construct 4" sidewalk