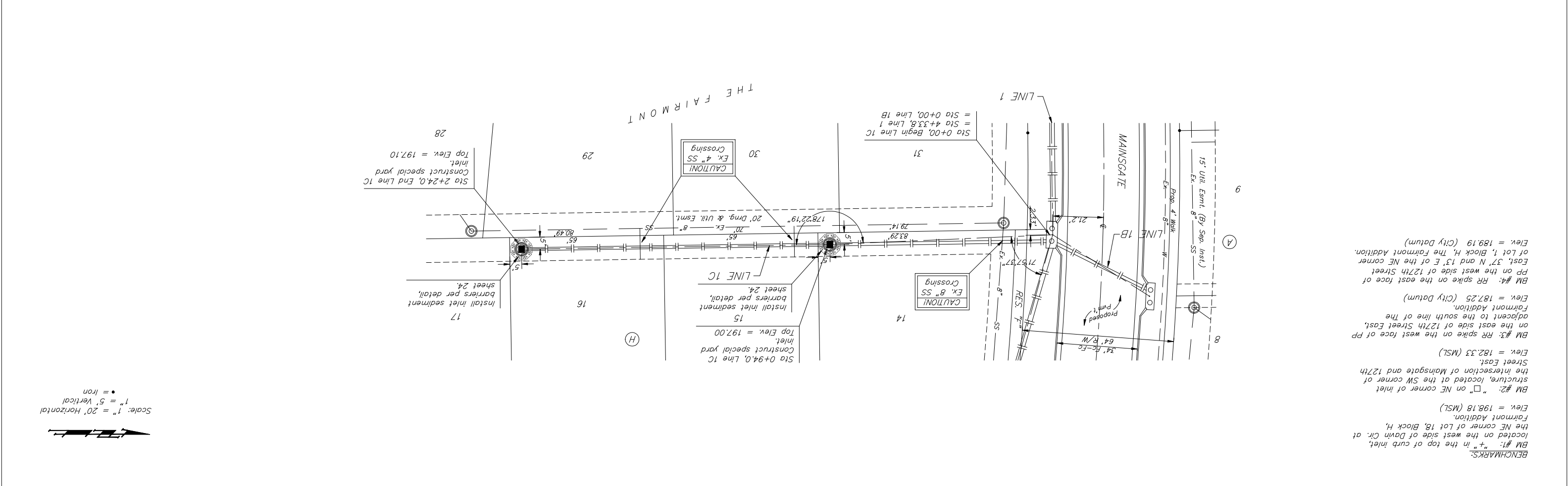
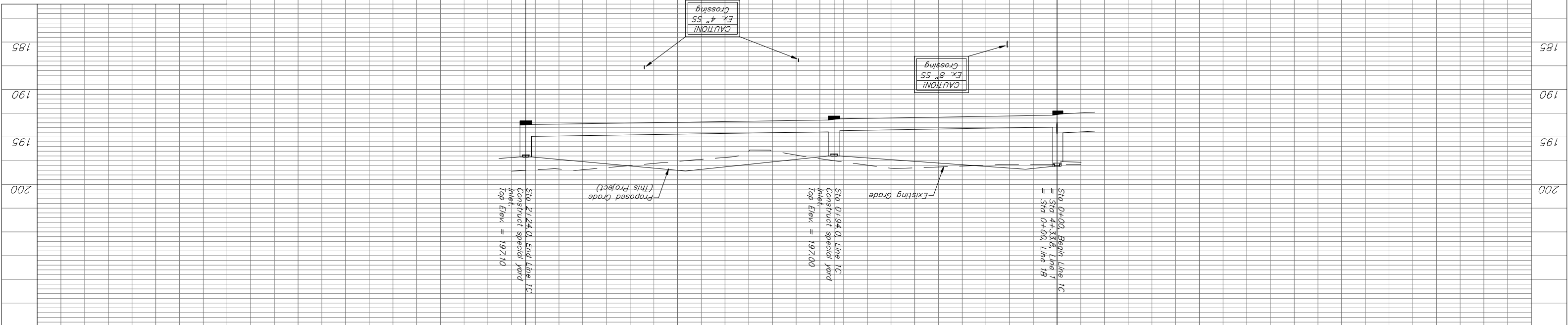


THE FAIRMONT - PHASE IV
LINE 1C
STORM WATER SEWER IMPROVEMENTS

Baughman
 ENGINEERING | SURVEYING | PLANNING | LANDSCAPE ARCHITECTURE
 115 Main St., Suite 200, Fairmont, VT 05704
 P: 802.253.1234

DESIGN NUMBER: 47284246
 PROJECT NUMBER: 47284246
 SCALE: Noted
 DATE: 08/06
 APPROVED: [Signature]
 DRAWN: TMS
 SHEET: 15 OF 32
 06-01-FA170



Scale: 1" = 20' Horizontal
 1" = 5' Vertical
 • = Iron

BENCHMARKS:
 BM #1: "+" in the top of curb inlet, located on the west side of Davin Cir. at the NE corner of Lot 18, Block H, Fairmont Addition.
 Elev. = 198.18 (MSL)
 BM #2: "□" on NE corner of inlet structure, located at the SW corner of the intersection of Mainsgate and 127th Street East.
 Elev. = 182.33 (MSL)
 BM #3: RR spike on the west face of PP on the east side of 127th Street East, adjacent to the south line of The Fairmont Addition.
 Elev. = 187.25 (City Datum)
 BM #4: RR spike on the east face of PP on the west side of 127th Street East, 37' N and 13' E of the NE corner of Lot 1, Block H, The Fairmont Addition.
 Elev. = 189.19 (City Datum)