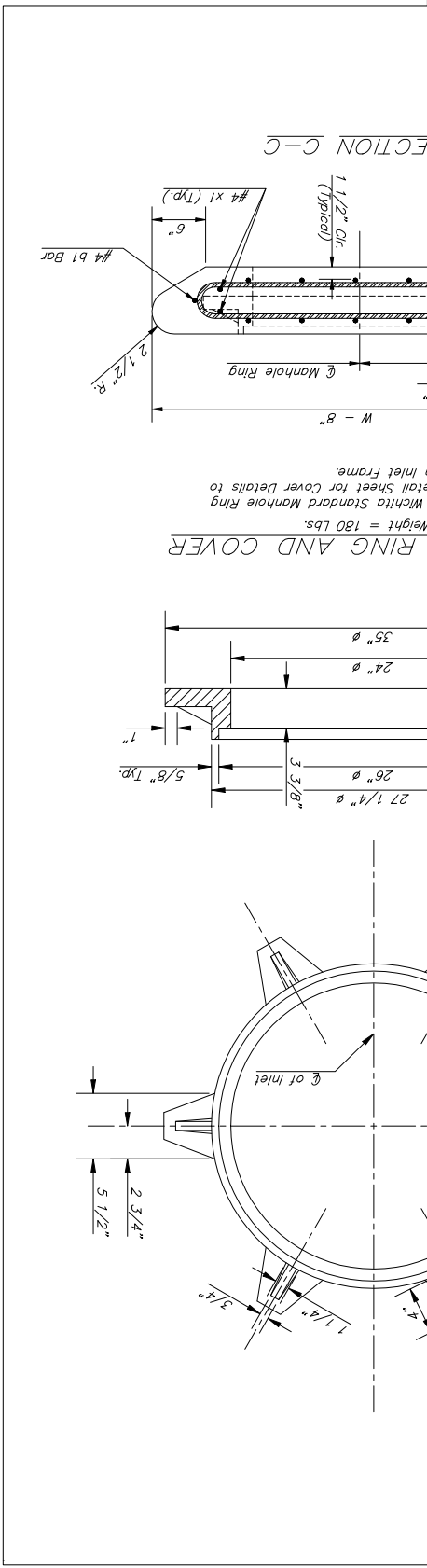


Baughman
CITY OF WICHITA STANDARD TYPE 1A
CURB INLET DETAILS

DESIGN STAFF: DEAN STAFF
APPROVED: 08/06
SCALE: NONE
SHEET: 16 OF 32

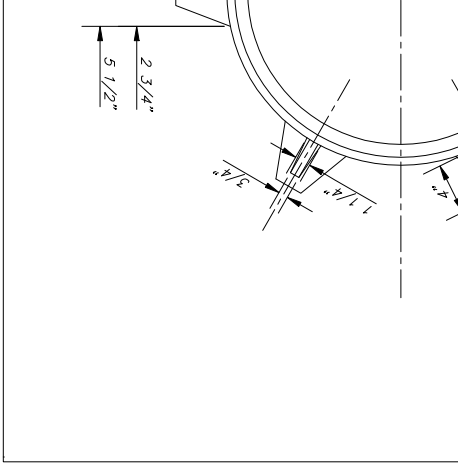
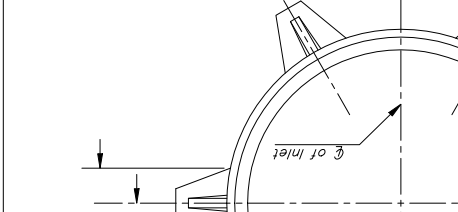
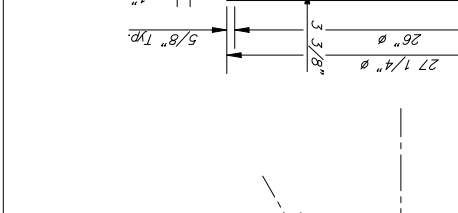
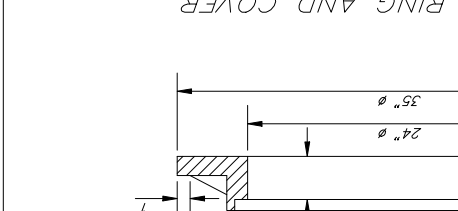
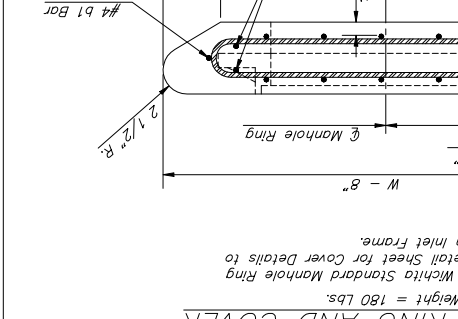
REVISIONS: 16, 1989
PROJECT NUMBER: 47284246
ENGINEERING COMPANY: P.A. 315 S.W. 35th, WICHITA, KS 67211 31662771 31662016

PLANNING | ARCHITECTURE | STRUCTURE | SURVEYING



STANDARD CURB INLET PRECAST TOPS

W	PRE-CAST TOP SIZE	PIPE SIZE	CU. YD. CONC.
4'-4"	3'-8" x 6'-4" x 7 1/2"	21" & SMALLER	0.354
5'-4"	4'-8" x 6'-4" x 7 1/2"	24" & 30"	0.514
6'-4"	5'-8" x 6'-4" x 7 1/2"	36" & 42"	0.644
7'-4"	6'-8" x 6'-4" x 7 1/2"	48" & 54"	0.774
8'-4"	7'-8" x 6'-4" x 7 1/2"	60" & 66"	0.904



PRECAST SLAB AND FLOOR REINFORCING

MARK	SIZE	NO.	LENGTH	NO.	LENGTH	NO.	LENGTH	NO.	LENGTH
* a1	#4	6	6'-7"	6	10'-7"	6	12'-7"	6	14'-7"
* a2	#4	4	6'-0"	4	8'-0"	4	10'-0"	4	14'-0"
* a3	#4	13	4'-1"	13	5'-1"	13	6'-1"	13	8'-1"
b1	#4	1	4'-9"	1	4'-9"	1	4'-9"	1	4'-9"
b2	#4	23	6'-1"	29	6'-1"	41	6'-1"	47	6'-1"
x1	#4	8	3'-10"	8	4'-2"	8	4'-6"	8	4'-10"
W = 4'-4" W = 5'-4" W = 6'-4" W = 7'-4" W = 8'-4"									

WALL REINFORCING

MARK	SIZE	NO.	LENGTH	NO.	LENGTH	NO.	LENGTH	NO.	LENGTH
* a1	#4	6	6'-7"	6	10'-7"	6	12'-7"	6	14'-7"
* a2	#4	4	6'-0"	4	8'-0"	4	10'-0"	4	14'-0"
* a3	#4	13	4'-1"	13	5'-1"	13	6'-1"	13	8'-1"
b1	#4	1	4'-9"	1	4'-9"	1	4'-9"	1	4'-9"
b2	#4	23	6'-1"	29	6'-1"	41	6'-1"	47	6'-1"
x1	#4	8	3'-10"	8	4'-2"	8	4'-6"	8	4'-10"
W = 4'-4" W = 5'-4" W = 6'-4" W = 7'-4" W = 8'-4"									

NOTE: Inlet Top Reinforcing shall be Spaced on 6" Max. Centers. Inlet Lids Shall be Notched Out as Indicated to Facilitate Construction of Curb.

NOTE: Concrete Tops to be installed on thin mortar cushion to insure full support along brick walls. Concrete may be cast in place or precast. Concrete used for inlet construction shall be concrete pavement mix with air entrainment.

NOTE: Expansion Joint Only in Curb Area With Concrete Pavement.

NOTE: Contractor shall have the option of constructing 8" brick masonry walls between the concrete inlet base and top on this inlet when W=6'-4" and H=7'-0" or less.

Additional curb and gutter construction necessary to connect set-back inlet to pavement will be paid for at the unit price bid for each inlet hookup.

Inlet invert shall be shaped with 8 sack sand mix concrete to create flow channels and to increase hydraulic efficiency such that the inlet will be self-cleaning between all inlet and/or outlet pipes.

The ends of all pipes installed in inlets shall be cut off flush with the inside face of the inlet wall.