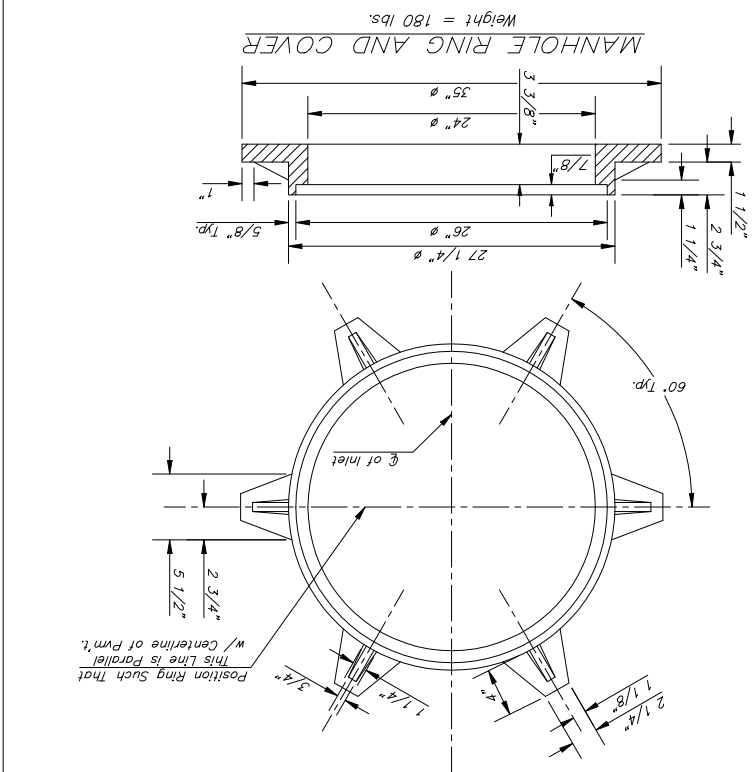


17 OF 32

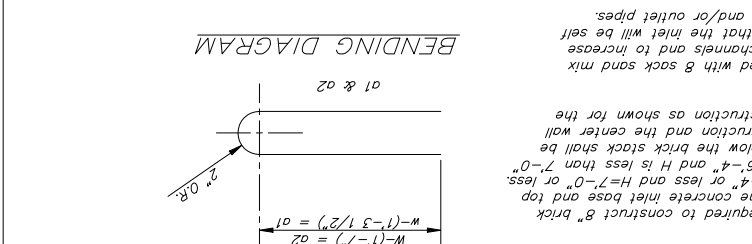
REVISIONS: NONE
 DATE: 08/06
 APPROVED: [Signature]
 DESIGN: C.O.W.
 DRAWN: STAFF
 PROJECT NUMBER: 472-84246
 FILE: 16, 1989

Typical

City of Wichita Standard Type 1A
Curb Inlet Details
 Baughman Company, P.A. 315 S.W. 10th St., Wichita, KS 67211 316-262-7271 316-262-0106



W	PRE-CAST TOP SIZE	PIPE SIZE	CU YD. CONC.	0.83F	1.09F	1.35F	1.61F	1.87F
4'-4"	3'-8" 11'-4" 7 1/2"	21" & SMALLER	0.83F	1.09F	1.35F	1.61F	1.87F	
5'-4"	4'-8" 11'-4" 7 1/2"	24" & 30"	1.09F	1.35F	1.61F	1.87F		
6'-4"	5'-8" 11'-4" 7 1/2"	36" & 42"	1.35F	1.61F	1.87F			
7'-4"	6'-8" 11'-4" 7 1/2"	48" & 54"	1.61F	1.87F				
8'-4"	7'-8" 11'-4" 7 1/2"	60" & 66"	1.87F					



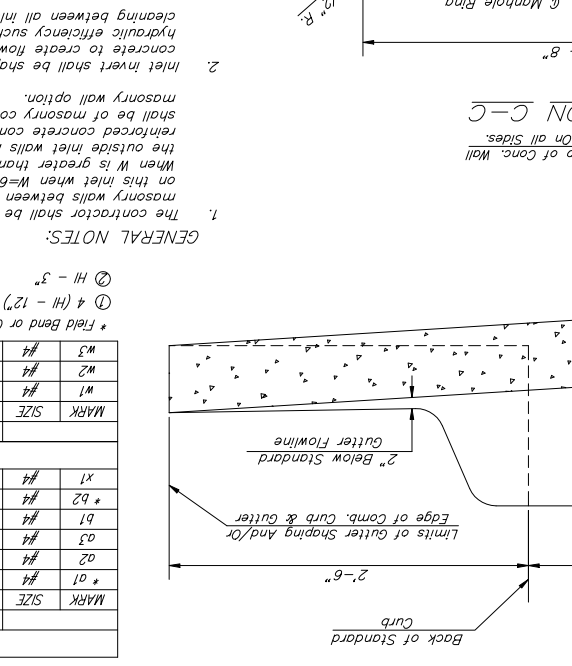
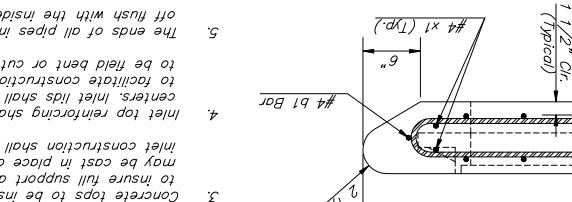
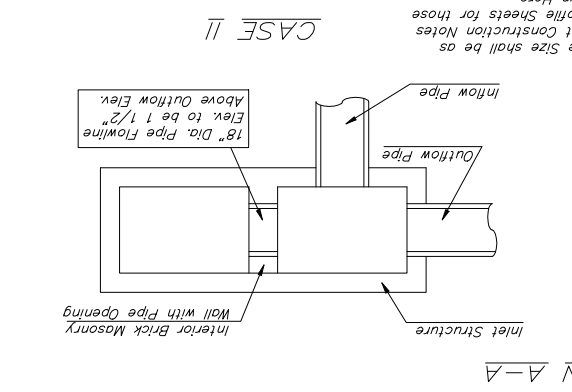
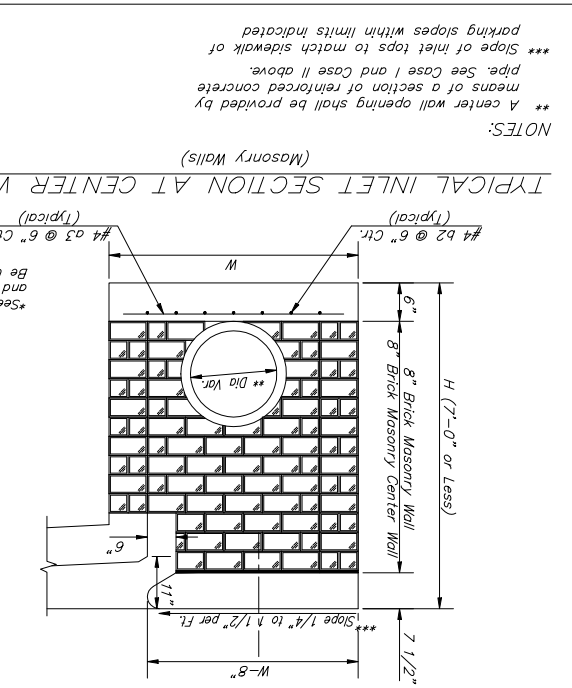
PRECAST SLAB AND FLOOR REINFORCING

MARK	SIZE	NO.	LENGTH	NO.	LENGTH	NO.	LENGTH
* 01	#4	13	6'-7"	13	8'-7"	13	12'-7"
02	#4	4	8'-0"	4	10'-0"	4	14'-0"
03	#4	23	4'-1"	23	5'-1"	23	7'-1"
04	#4	23	4'-1"	23	5'-1"	23	7'-1"
05	#4	1	9'-9"	1	9'-9"	1	9'-9"
b1	#4	1	9'-9"	1	9'-9"	1	9'-9"
* b2	#4	23	11'-1"	29	11'-1"	41	11'-1"
x1	#4	16	3'-10"	16	4'-2"	16	4'-10"
56	#4	16	4'-2"	16	4'-6"	16	4'-10"
57	#4	16	4'-2"	16	4'-6"	16	4'-10"
58	#4	16	4'-2"	16	4'-6"	16	4'-10"

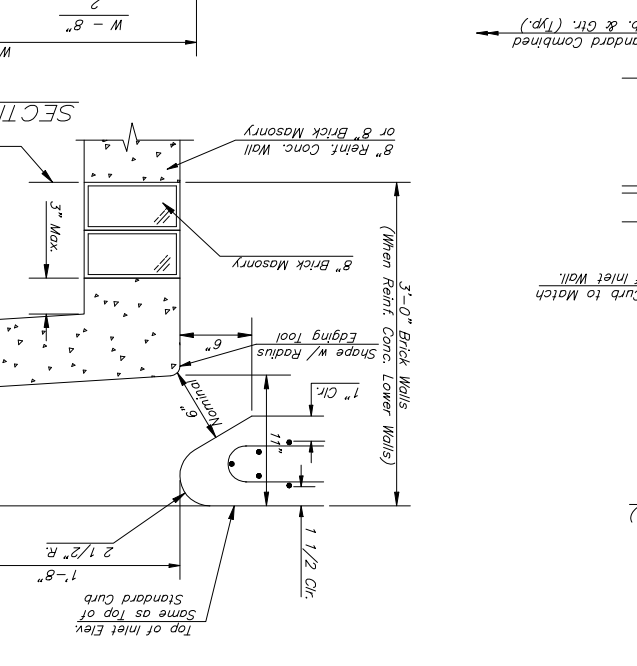
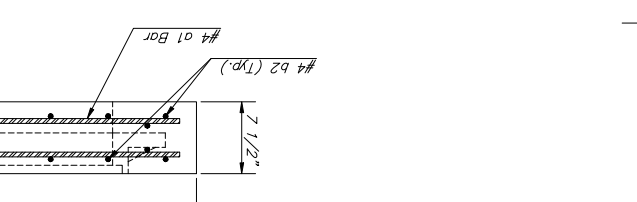
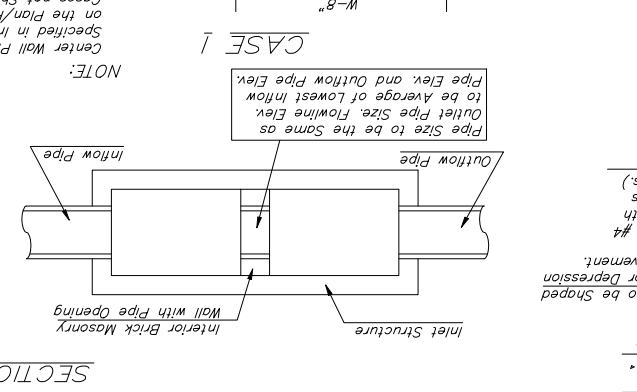
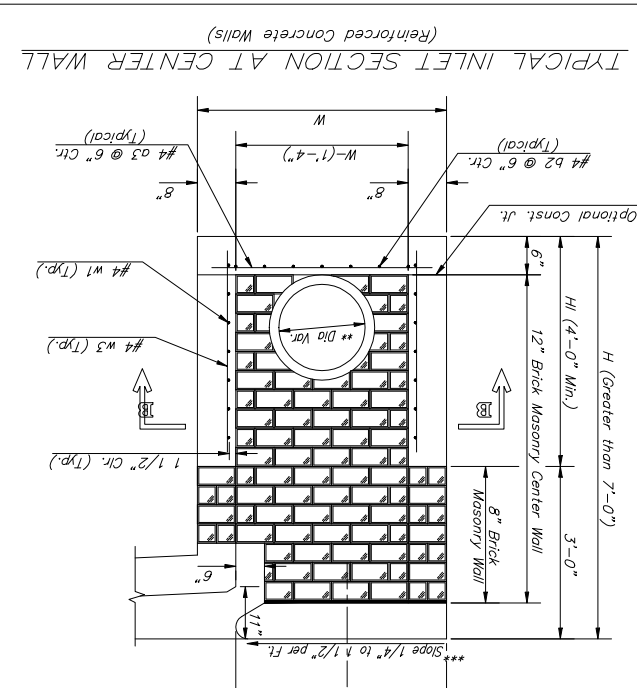
WALL REINFORCING

MARK	SIZE	NO.	LENGTH	NO.	LENGTH	NO.	LENGTH
w1	#4	11	1'-1"	11	1'-1"	11	1'-1"
w2	#4	11	1'-1"	11	1'-1"	11	1'-1"
w3	#4	11	1'-1"	11	1'-1"	11	1'-1"

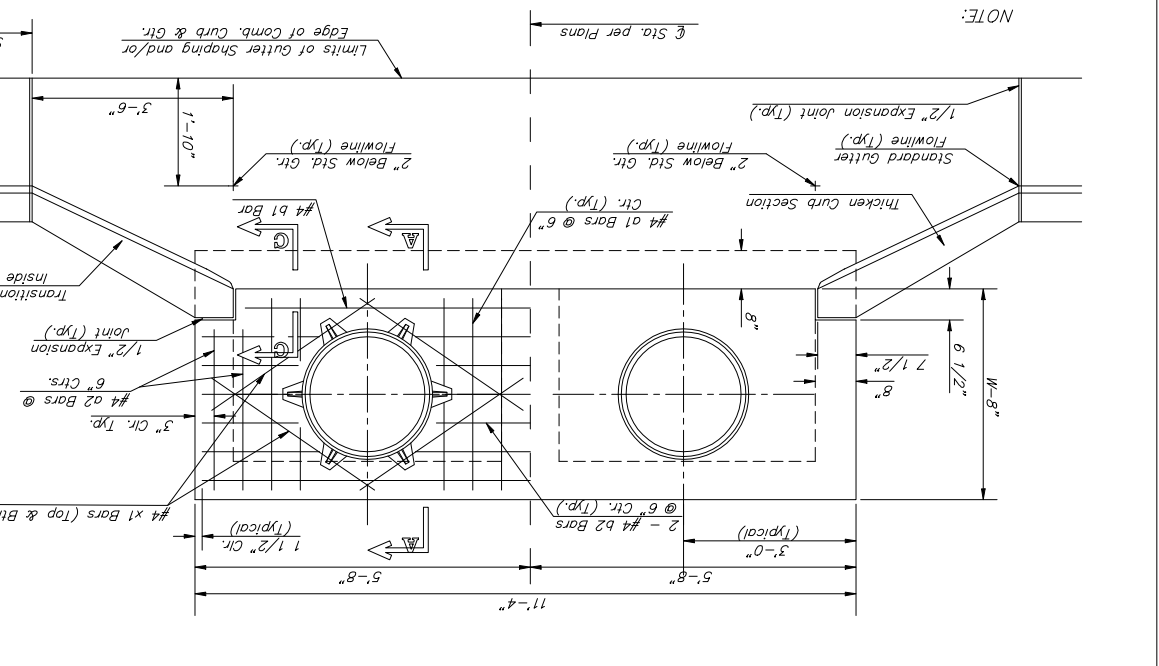
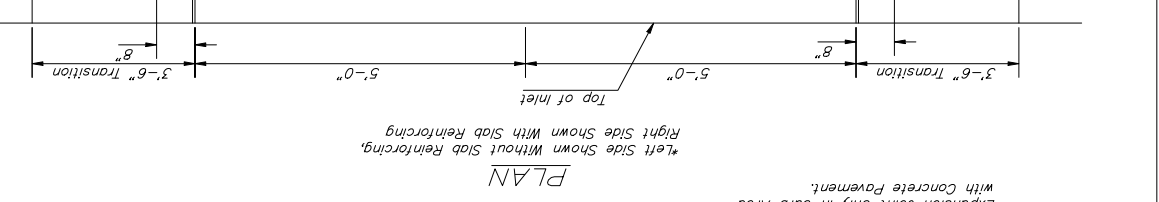
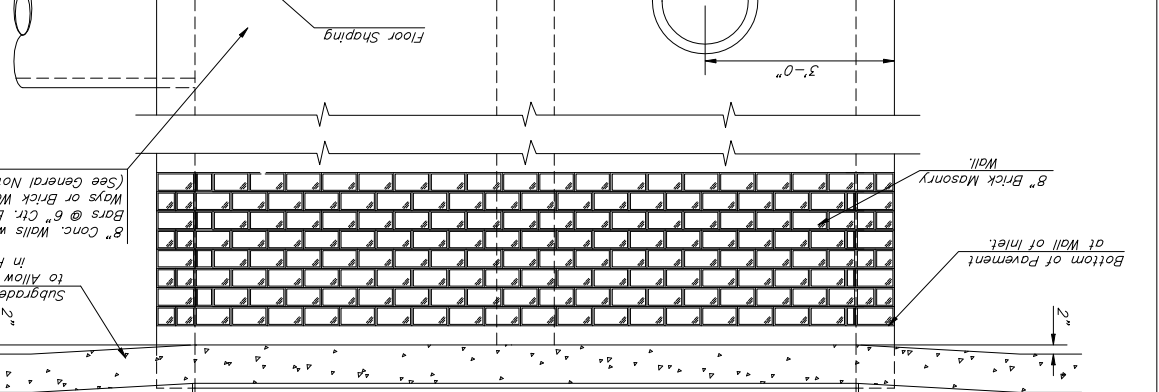
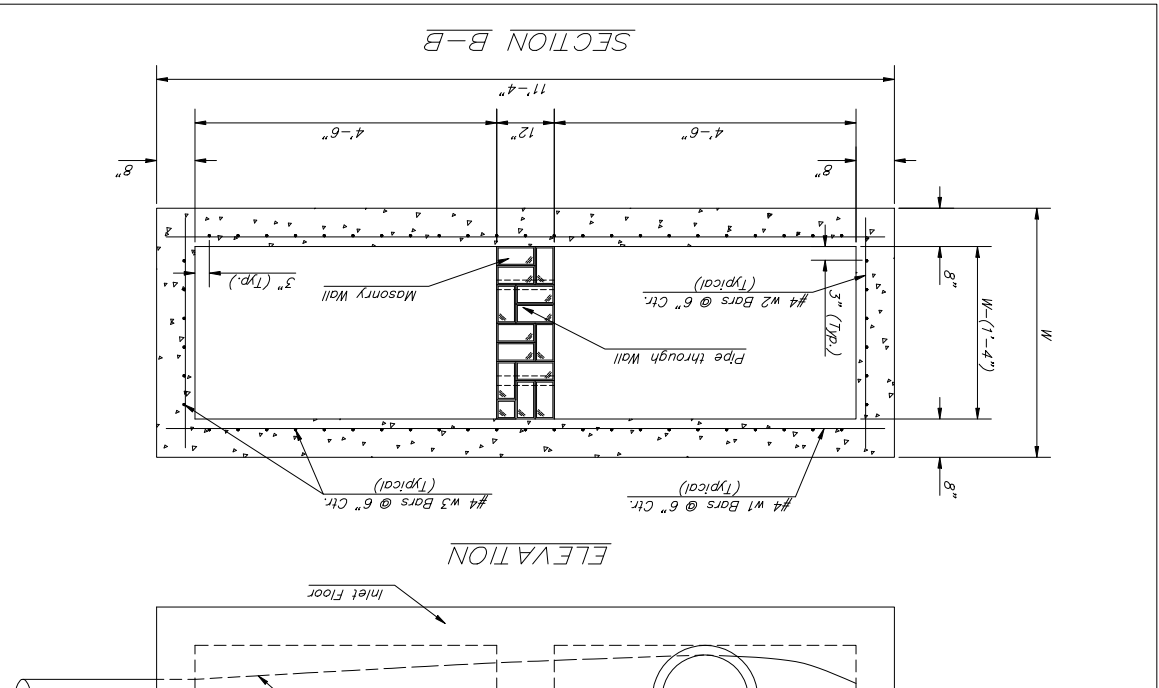
* Field Band or Cut Reinforcing as Required for Clearance
 ① 4 (H1 - 12') (H1 - 21') Rounded down to nearest 0.5'
 ② H1 - 3'



NOTE: Center Wall Pipe Size shall be as Specified in Inlet Construction Notes on the Plan/Profile Sheets for those Cases not Shown Here.



NOTE: Center Wall Pipe Size shall be as Specified in Inlet Construction Notes on the Plan/Profile Sheets for those Cases not Shown Here.



NOTE: Expansion Joint Only in Curb Area with Concrete Pavement