

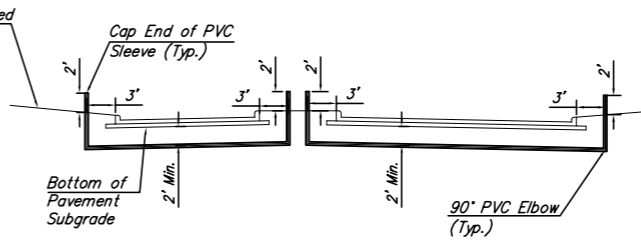
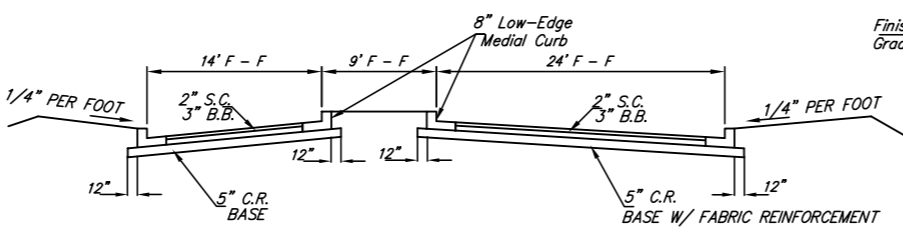
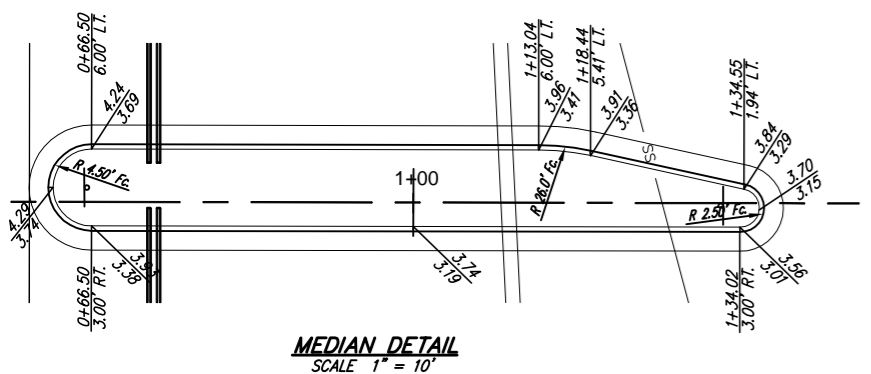
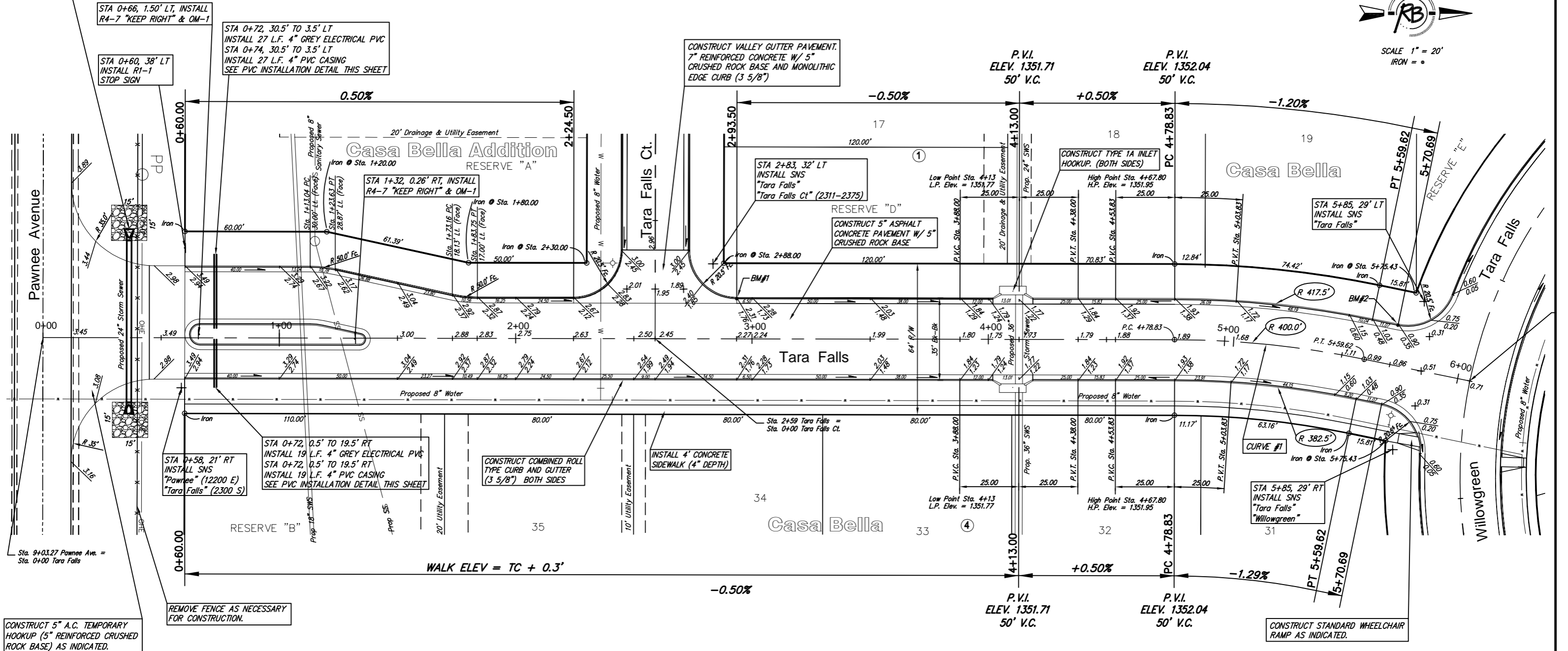
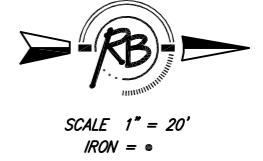
STA. 0+37, 46' LEFT TO STA. 0+37, 34' RIGHT  
 INSTALL 78 L.F. 24" RCP W/ END SECTIONS.  
 USFL = 1349.90  
 DSFL = 1349.20  
 PLACE 50 S.Y. LIGHT STONE RIP-RAP. REGRADE  
 DITCHES TO MATCH RCP 50' WEST AND 125' EAST OF  
 END SECTIONS.

**CURVE #1**  
 Curve Data Based on Centerline  
 Rad. = 400' Delta = 12°00'00" Tangent = 42.04'  
 Arc = 80.79' L.C. = 83.62' Def/Ft. = 4.45600 Min.

Station	Arc	FACE CHORD LENGTHS			
		8 Lt.	8 Rt.	Defl.	T. Defl.
4+78.53	-	-	-	0°00'00"	0°00'00"
5+00.00	21.47'	23.65'	20.87'	1°35'40"	1°35'40"
5+25.00	25.00'	27.54'	24.30'	1°51'24"	3°27'04"
5+50.00	25.00'	27.54'	24.30'	1°51'24"	5°18'28"
5+59.62	9.62'	10.80'	9.35'	0°42'52"	5°22'44"

**Subdivision Bench Marks**

No.	Street and Station	From Cl.	Description	Elevation
1	Tara Falls, Sta. 2+93.50	17.0' Lt.	N.W. End of Curb Return Intersection of Tara Falls and Tara Falls Ct.	
2	Tara Falls, Sta. 5+70.69	17.0' Lt.	S.W. End of Curb Return Intersection of Tara Falls and Willowgreen	



**Casa Bella Addition - Phase 1, Paving Improvements**  
**Tara Falls**  
 WICHITA, KANSAS

**Ruggles & Bohm, P.A.**  
 Engineering, Surveying, Land Planning

924 North Main  
 Wichita, Kansas 67203  
 www.rbkansas.com

(316) 264-8008  
 (316) 264-4621 fax  
 E-mail: info@rbkansas.com

DRAWING FILE: paving {Tara Falls}  
 PROJECT NUMBER: 472-84271

DESIGN: E.J.G.  
 DRAWN: MLP  
 REVIEW: [Blank]  
 UTILITY: [Blank]  
 DATE: Nov. 16, 2005

SHEET: 6 OF 24