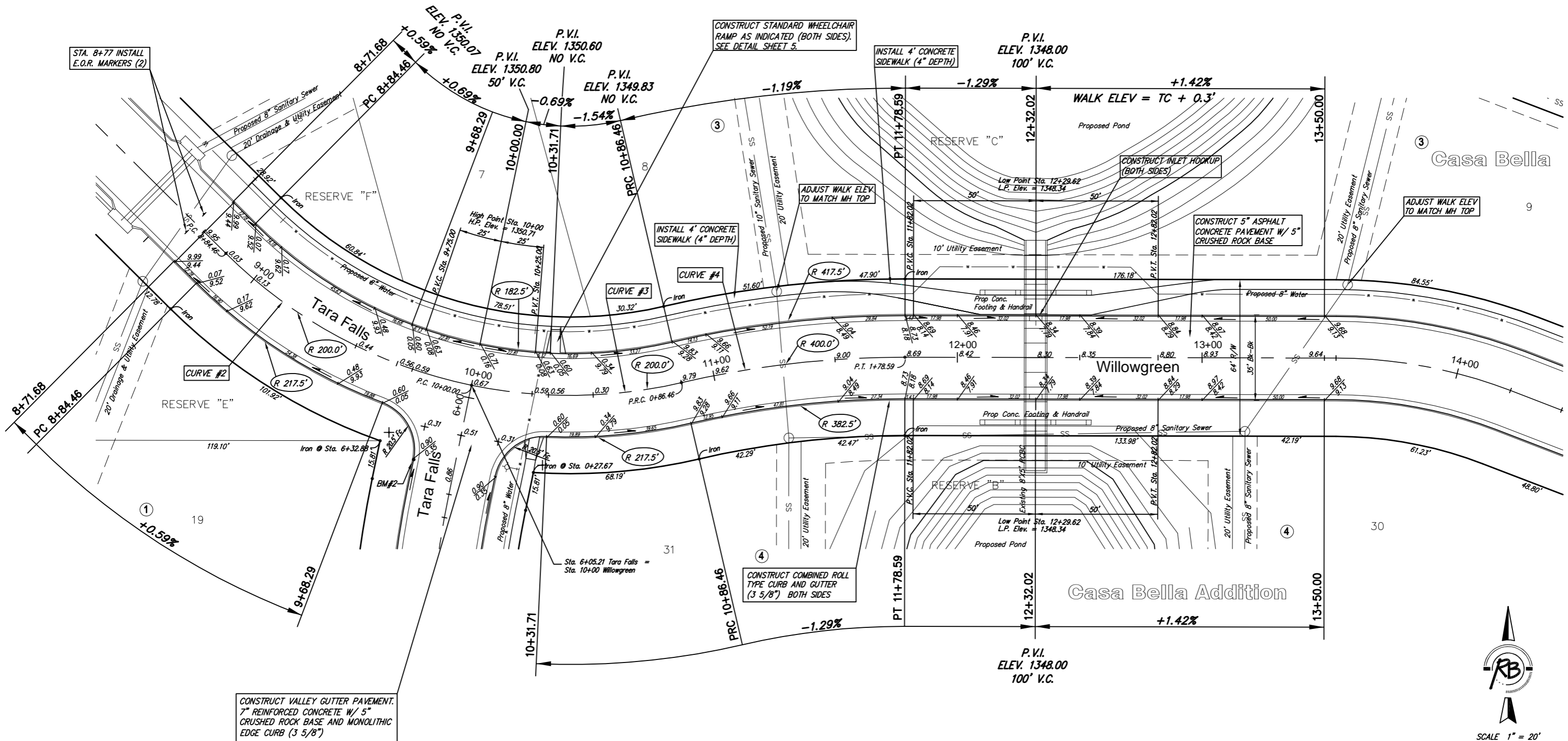


Subdivision Bench Marks

No.	Street and Station	From Cl.	Description	Elevation
2	Tara Falls, Sta. 5+70.69	17.0' Lt.	S.W. End of Curb Return Intersection of Tara Falls and Willowgreen	



CONSTRUCT VALLEY GUTTER PAVEMENT. 7" REINFORCED CONCRETE W/ 5" CRUSHED ROCK BASE AND MONOLITHIC EDGE CURB (3 5/8")

CURVE #2

Curve Data Based on Centerline
 Rad. = 200' Delta = 33°00'00" Tangent = 59.24'
 Arc = 115.54' L.C. = 113.61' Def/Ft. = 8.56846 Min.

Station	FACE CHORD LENGTHS				T. Defl.
	8 Lt.	8 Rt.	Defl.	T. Defl.	
8+84.46	-	-	0'00"00"	0'00"00"	
9+00.00	15.54'	17.43'	13.55'	2'13"09"	2'13"09"
9+25.00	25.00'	28.02'	21.80'	3'34"14"	5'47"23"
9+50.00	25.00'	28.02'	21.80'	3'34"14"	9'21"37"
9+75.00	25.00'	28.02'	21.80'	3'34"14"	12'55"51"
10+00.00	25.00'	23.25'	18.09'	3'34"14"	16'30"05"

CURVE #3

Curve Data Based on Centerline
 Rad. = 200' Delta = 25°00'00" Tangent = 44.34'
 Arc = 86.46' L.C. = 86.58' Def/Ft. = 8.67453 Min.

Station	FACE CHORD LENGTHS				T. Defl.
	8 Lt.	8 Rt.	Defl.	T. Defl.	
10+00.00	-	-	0'00"00"	0'00"00"	
10+25.00	25.00'	22.06'	28.37'	3'36"52"	3'36"52"
10+50.00	25.00'	22.06'	28.37'	3'36"52"	7'13"44"
10+75.00	25.00'	22.06'	28.37'	3'36"52"	10'50"36"
10+86.46	11.46'	10.12'	13.01'	1'39"24"	12'29"60"

CURVE #4

Curve Data Based on Centerline
 Rad. = 200' Delta = 25°00'00" Tangent = 44.34'
 Arc = 86.46' L.C. = 86.58' Def/Ft. = 8.67453 Min.

Station	FACE CHORD LENGTHS				T. Defl.
	8 Lt.	8 Rt.	Defl.	T. Defl.	
10+86.46	-	-	0'00"00"	0'00"00"	
11+00.00	13.54'	14.17'	12.50'	0'57"19"	0'57"19"
11+25.00	25.00'	26.16'	23.08'	1'45"50"	2'43"09"
11+50.00	25.00'	26.16'	23.08'	1'45"50"	4'28"59"
11+78.59	28.59'	29.92'	26.40'	2'01"01"	6'29"60"

NOTE: ROLL TYPE CURB AND GUTTER TO BE CONSTRUCTED ALONG PAVEMENT DEPICTED ON THIS SHEET



Casa Bella Addition - Phase 1, Paving Improvements
 Tara Falls - Willowgreen
 WICHITA, KANSAS

Ruggles & Bohm, P.A.
 Engineering, Surveying, Land Planning

924 North Main
 Wichita, Kansas 67203
 www.rbkansas.com

(316) 264-8008
 (316) 264-4621 fax
 E-mail: info@rbkansas.com

DESIGN: E.J.G.
 DRAWN: MLP
 REVIEW: [blank]
 UTILITY: [blank]
 DATE: Nov. 16, 2005

PROJECT NUMBER: 472-84271

SHEET: 7 OF 24