

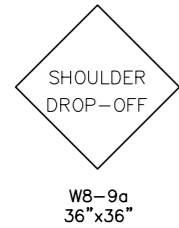
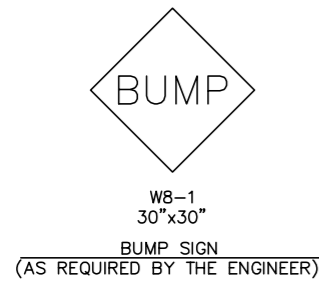
COUNTY	STATE	PROJECT NUMBER	FISCAL YEAR	SHEET NO.	TOTAL SHEETS
SEDGWICK	KANSAS				

LIST OF TRAFFIC CONTROL DEVICES *

MUTCD DEVICE NO.	NO.	FLASHERS		REMARKS	DELINEATORS & CHANNELIZATION DEVICES					
		TYPE A	TYPE B		DEVICE	NO.	SIZE	FLASHERS		
								TYPE A	TYPE B	TYPE C
W20-1	2				BARRICADES					
R2-5c	2				TYPE III					
W20-4	2				TYPE II					
R4-1	2				TYPE I					
R2-1	2				DRUMS					
W20-7a	2				CONES					
G20-2A	2				TUBES					
W8-9a					VERTICAL PANELS					
W8-11					SINGLE					
W8-1					BACK TO BACK					
					PAVEMENT MARKING	WHITE	YELLOW			
					4" BROKEN (Lin. Ft.)					
					4" SOLID (Lin. Ft.)					
					TEMPORARY STRIPING (Line Mile)					

* FOR INFORMATION ONLY

SEE SHEET NO. _____ FOR TRAFFIC CONTROL NOTES



SHOULDER DROP-OFF SIGN
(SPACED @ 1/4 MILE THROUGHOUT PROJECT AS REQUIRED)



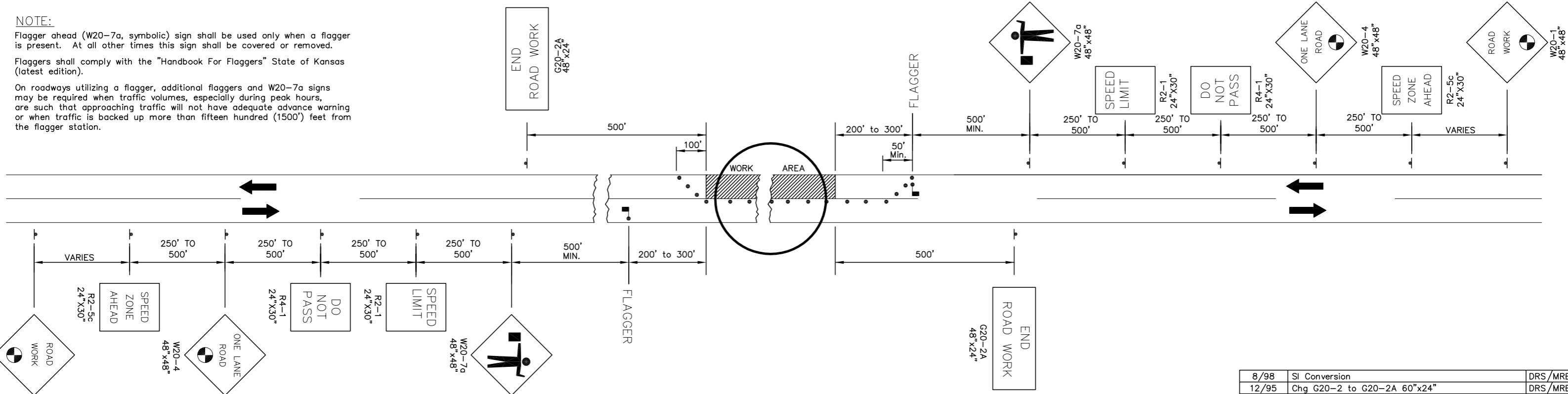
UNEVEN LANES SIGN
(SPACED @ 1/4 MILE THROUGHOUT PROJECT AS REQUIRED)

NOTE:

Flagger ahead (W20-7a, symbolic) sign shall be used only when a flagger is present. At all other times this sign shall be covered or removed.

Flaggers shall comply with the "Handbook For Flaggers" State of Kansas (latest edition).

On roadways utilizing a flagger, additional flaggers and W20-7a signs may be required when traffic volumes, especially during peak hours, are such that approaching traffic will not have adequate advance warning or when traffic is backed up more than fifteen hundred (1500') feet from the flagger station.



8/98	SI Conversion	DRS/MRB
12/95	Chg G20-2 to G20-2A 60"x24"	DRS/MRB
12/94	Chg W8-9a, W20-1, G20-2 & Add W8-11	DRS/MRB
Date	Description	By /Chk

TRAFFIC CONTROL PLAN
FOR ONE LANE CLOSED ON
A TWO-LANE ROADWAY (FLAGGER)
T.C. NO. 3.0

PREPARED BY
SEDGWICK COUNTY PUBLIC WORKS
HIGHWAY DEPARTMENT
DAVID C. SPEARS, P.E. DIRECTOR/COUNTY ENGINEER

REVISED	SCALE	DESIGNED	DRAWN	CHECKED	SHEET NO.
	NONE	M.R.B.	D.R.S.	M.R.B.	22
	DATE	6/88	4/94	4/94	21

DWG NAME: Q:\Blocks\Std\Tc3.dwg

TRAFFIC CONTROL PLAN
FOR HANDLING ONE-LANE TRAFFIC THROUGH WORK AREA
(FLAGGER)

Distance To Be Determined
By The ENGINEER.

- Channelization devices.