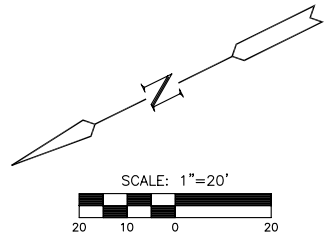
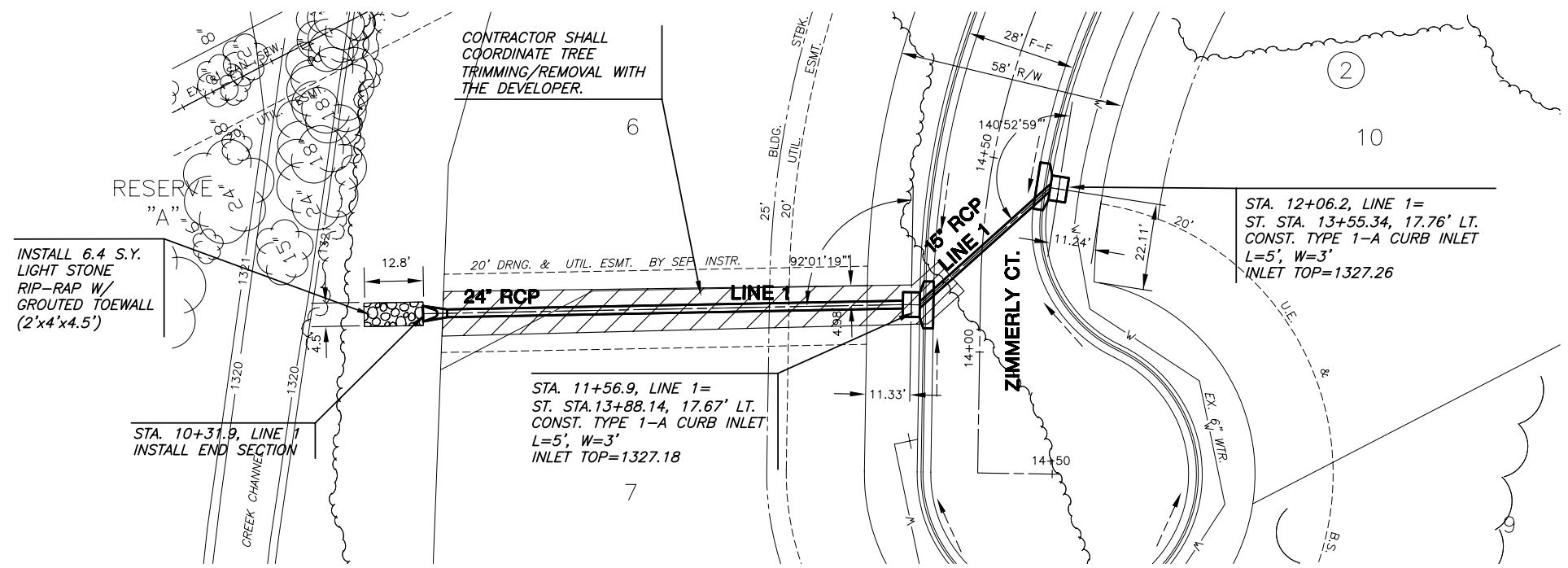


THE TIMBERLANDS ADDITION

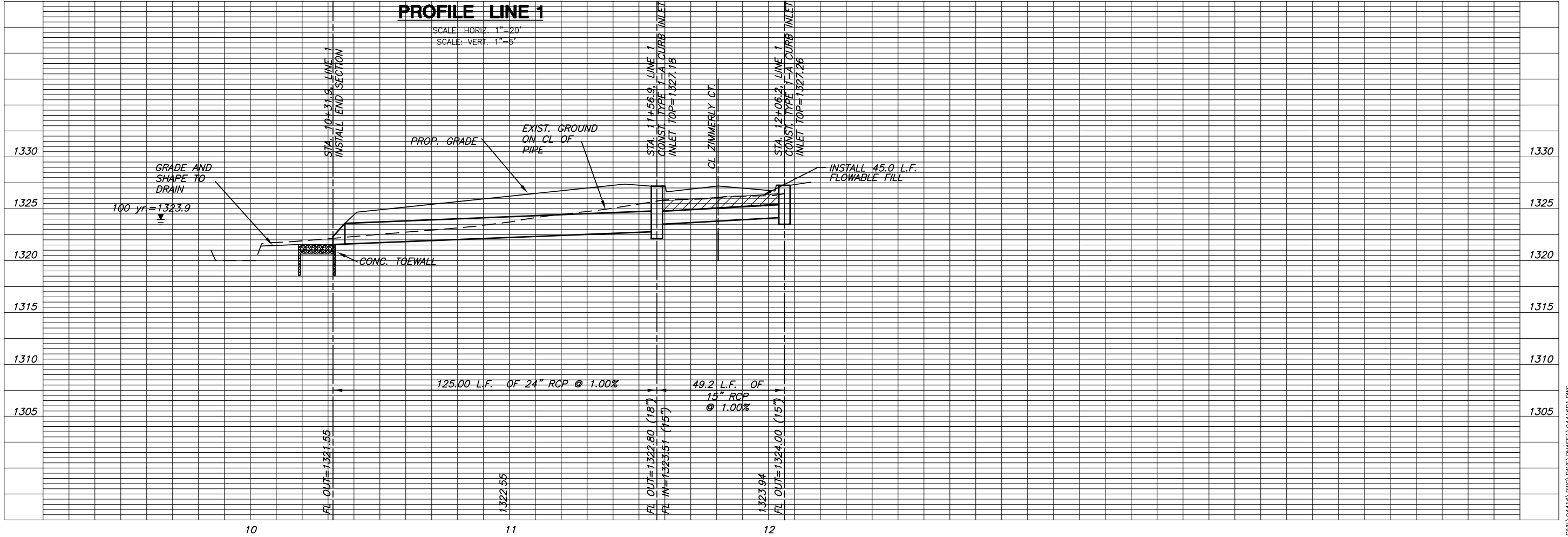


NOTE:
CONTRACTOR SHALL MAKE EVERY EFFORT TO SAVE EXISTING TREES. TREE TRIMMING/REMOVAL WHEN REQUIRED SHALL BE APPROVED BY THE DEVELOPER PRIOR TO COMMENCENT.

PLAN LINE 1

= TREE TRIMMING/REMOVAL

PROFILE LINE 1



**PAVING & INCIDENTAL DRAINAGE
THE TIMBERLANDS
ADDITION**

SWS
LINE 1 & 2
SHEET TITLE
472-84297
PROJECT NUMBER

SRS
DESIGN BY
DM
DRAWN BY
GJA
CHECKED BY

ISSUED
AUG 2006
REVISED

SHEET NO.
8 of 16