

PERMANENT SEEDING

NOTE: All areas disturbed by construction, except the paved areas and areas of undisturbed native sod or other desirable vegetation shall be fertilized (limed when required), seeded in-kind, and mulched. Soil preparation shall conform to the Best Management Practices for Erosion and Sediment Control.

SEEDING PERIODS	
COOL SEASON	WARM SEASON
February 15 to April 20 and August 15 to September 30	December 1 to April 30
SPECIES	SPECIES
Blue Grasses	Bluestems
Brome Grasses	Buffalo Grass
Fescues	Eastern Gama Grass
Rye Grasses	Gramas
Wheat Grasses	Indian Grass
Reed Canary Grass	Love Grasses
	Switch Grass
	Wildflower Mixes

When "COOL SEASON" species are mixed with "WARM SEASON" species, in areas of 5 acres or more, the mixture shall be seeded during the "WARM SEASON". In areas of less than 5 acres, the mixture of "COOL SEASON" and "WARM SEASON" species may be seeded during the "WARM or COOL SEASONS".

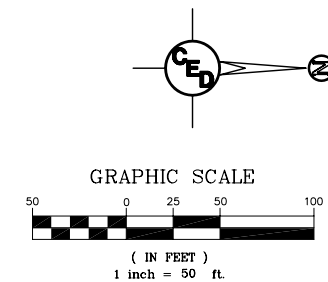
EROSION CONTROL PLAN
MASCOT AVENUE STREET PAVING IMPROVEMENTS
WICHITA, SEDGWICK COUNTY, KANSAS

Subject Area=±1.7 Acres
 Disturbed Area=±1.7 Acres
 Proposed Impervious Area=±1.1 Acres

Contractor shall install erosion control devices under Best Management Practices, BMP's, as shown but not limited to the call-outs on this plan. Contractor will be required to install additional BMP's as required when additional areas begin to erode that are not already mentioned on this plan. (See Erosion Control Sheets 13-17 for more information.)

Contractor shall seed in kind approximately 2,875 S.Y. of disturbed areas. Contractor shall refer to General Note No. 22 on Title Sheet for restoration of disturbed grass areas.

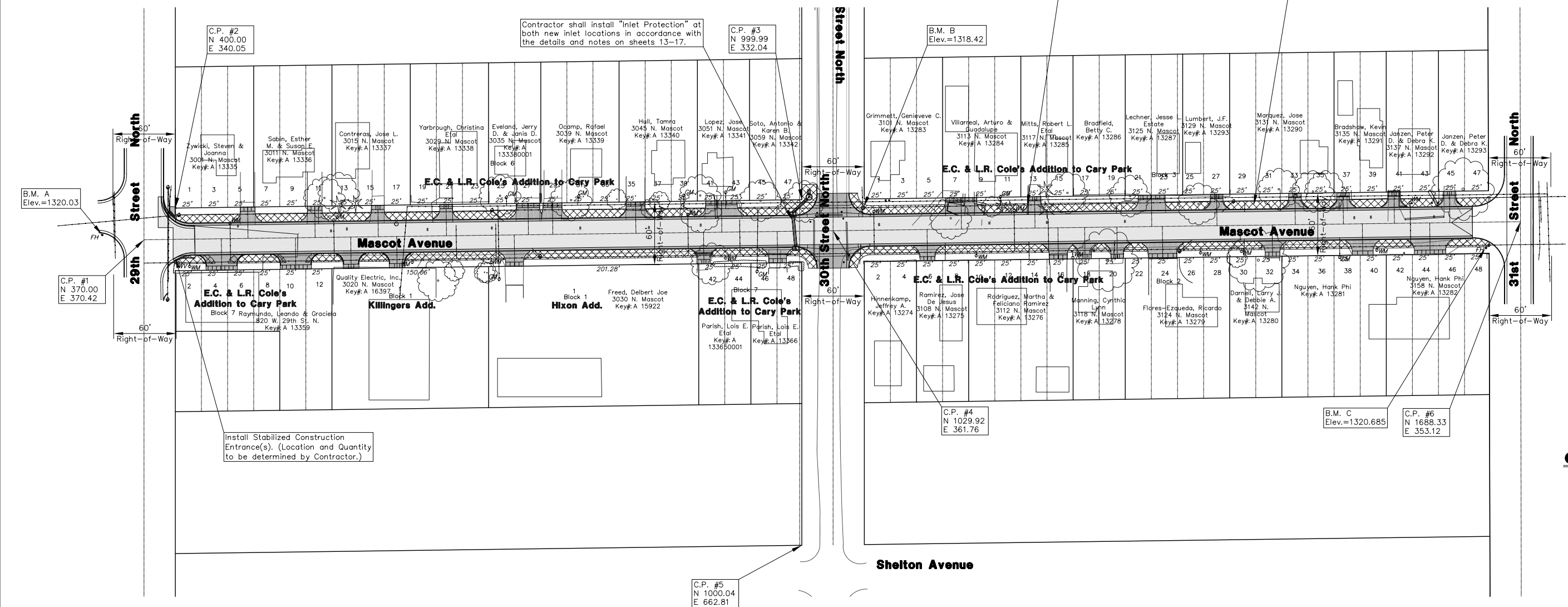
Contractor shall install 1,630 S.Y. of 8' wide "Back of Curb Protection" (Curlex 1 Excelsior Erosion Blanket) behind Back of Curb along the length of project. (See BMP Detail Sheet's 13-17 for Details.)



- = Proposed 5" A.C. Pavement on 5" Crushed Rock Base
- = Proposed Concrete Drives, Valley Gutters, Curb & Gutter, etc.
- = Back of Curb Protection

UTILITY LEGEND

- = Catv Box
- = Guard Post/Bollard
- = Guy Anchor
- = Guy Pole
- = Light Pole
- = Mailbox
- = Gas Meter
- = Power Pole
- = Sign
- = San. Sewer Manhole
- = Storm Sewer Manhole
- = Telephone Riser
- = Water Meter
- = Water Valve
- = Water Well
- = Fire Hydrant
- = Coniferous Tree
- = Deciduous Tree
- = Overhead Electric
- = Gas Line
- = Water Line



UTILITIES SHOWN REPRESENT THE BEST INFORMATION AVAILABLE FOR DESIGN. ADDITIONAL UTILITIES MAY BE PRESENT ON THIS PROJECT. THE CONTRACTOR SHALL BE RESPONSIBLE FOR DETERMINING THE EXACT LOCATION, DEPTH AND SIZE OF ALL UNDERGROUND UTILITIES PRIOR TO CONSTRUCTION. THE CONTRACTOR SHALL BE LIABLE FOR ANY DAMAGE CAUSED BY THE FAILURE TO DO SO.

SURVEY DISCLAIMER:
 TOPOGRAPHIC SURVEY USED IN PREPARING PLANS WAS PROVIDED BY GARBER SURVEYING SERVICE, (620) 665-7032, 423 WEST FIRST AVE., HUTCHINSON, KS. ENGINEER DOES NOT GUARANTEE SURVEY ELEVATIONS FOR ACCURACY. CONTRACTOR SHALL VERIFY ELEVATIONS AND NOTIFY ENGINEER OF ANY DISCREPANCIES.

HORIZONTAL CONTROL POINTS

C.P. NO.	N	E	Description
C.P. NO. 1	370.00	370.42	Magnetic Nail, Intersection of 29th St. N. & Mascot Ave.
C.P. NO. 2	400.00	340.05	1/2" Pin w/ Savoy Cap, NW R/W Cor. of 29th & Mascot.
C.P. NO. 3	999.99	332.04	1/2" Pin w/ Savoy Cap, SW R/W Cor. of 30th & Mascot.
C.P. NO. 4	1029.92	361.76	Magnetic Nail, Intersection of 30th St. N. & Mascot Ave.
C.P. NO. 5	1000.04	662.81	1/2" Pipe, S/W R/W Cor. of 30th St. N. & Shelton Ave.
C.P. NO. 6	1688.33	353.12	Magnetic Nail, Intersection of 31st St. N. & Mascot Ave.

PROJECT BENCHMARK LIST

B.M.	Description	Elevation
B.M.	C.O.W. BM @ NE Quad of Arkansas & 29th St. N. 80' East of CL of Arkansas & 29.1' North of CL of 29th St. N.	1316.81
B.M. A	"M" in Mueller on top of F.H. SE Quad of Mascot & 29th St. N.	1320.03
B.M. B	RR Spike in PP @ NW Quad of Mascot & 30th St. N.	1318.42
B.M. C	"M" in Mueller on top of F.H. SE Quad of Mascot & 31st St. N.	1320.685

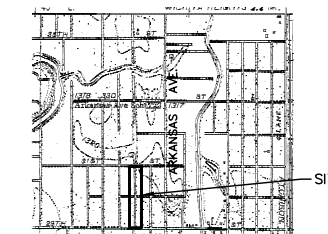
WATER VALVE TABLE

VALVE #	CL STATION	CL OFFSET	OFFSET DIRECTION
11020	0+32.52	22.29'	RIGHT
11015	12+88.04	21.97'	RIGHT(Not Field Verified)

PAVING CONTRACTOR WILL BE RESPONSIBLE TO OPERATE ALL WATER VALVES ON THE PROJECT, IN THE PRESENCE OF THE INSPECTOR, TO ENSURE ACCESSIBILITY TO THE VALVES, AND THAT ALL VALVES ARE LEFT IN THE "ON" POSITION WHEN THE PROJECT IS COMPLETED.

QUADRANGLE MAP

Sec. 32, T28S, R1E



WICHITA EAST QUADRANGLE
 7.5 Minute Series
 SCALE: 1" = 2,000'

CURB & GUTTER STREET IMPROVEMENTS FOR MASCOT AVENUE
EROSION CONTROL/SITE PLAN
 WICHITA, KANSAS
 PROJ. NO.: 472 84298
CERTIFIED ENGINEERING DESIGN, P.A.
 810 WEST DOUGLAS, SUITE C
 WICHITA, KANSAS 67203
 PH.(316)262-8808 FAX.(316)262-1669

DESIGNED: HDF	SCALE: 1"=50'	SHEET
DRAWN: CKW	DATE: 3/06	2
CHECKED: HDF	CEP FILE: Mascot-Base	TOTAL 20